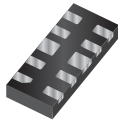


CTLTVS5-4**SURFACE MOUNT SILICON
LOW CAPACITANCE
QUAD TVS/DIODE ARRAY**www.centrasemi.com**Ideal for
USB
3.0****TLM1031 CASE****DESCRIPTION:**

The CENTRAL SEMICONDUCTOR CTLTVS5-4 is a 4-line TVS/Diode array packaged in a TLM1031 surface mount case. With its ultra low capacitance, this device was designed to protect four high speed data or transmission lines from over-voltage transients and ESD damage.

MARKING CODE: CTL5**APPLICATIONS:**

- USB 3.0 Power and Data Line Protection
- HDMI Interface Protection
- Tablets, Monitors, Displays, Smart Phones
- Ethernet Ports

FEATURES:

- Low capacitance
- Low clamping voltage
- Protects four I/O lines

MAXIMUM RATINGS: ($T_A=25^\circ\text{C}$)

Peak Pulse Current (8x20 μs)
 Peak Power Dissipation (8x20 μs)
 ESD Voltage (IEC 61000-4-2, Air)
 ESD Voltage (IEC 61000-4-2, Contact)
 Operating and Storage Junction Temperature

SYMBOL

I_{PP} 2.5
 P_{PK} 32.5
 V_{ESD} 15
 V_{ESD} 8.0
 T_J, T_{stg} -55 to +150

UNITS

A
 W
 kV
 kV
 $^\circ\text{C}$

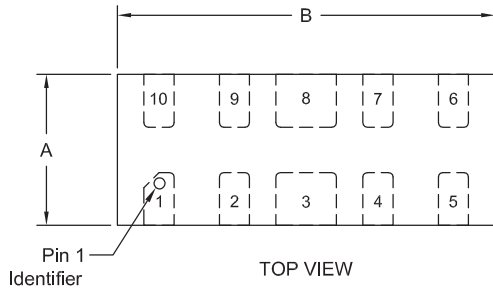
ELECTRICAL CHARACTERISTICS PER DIODE: ($T_A=25^\circ\text{C}$)

Maximum Reverse Stand-Off Voltage V_{RWM}	Reverse Breakdown Voltage I/O to GND $V_Z @ 1.0\text{mA}$		Maximum Reverse Leakage Current I/O to GND $I_R @ V_R$		Maximum Clamping Voltage 8x20 μs I/O to GND $V_C @ I_{PP}$		Maximum Off State Junction Capacitance I/O to GND ($V_R=0, f=1.0\text{MHz}$) C_J	Maximum Off State Junction Capacitance I/O to I/O ($V_R=0, f=1.0\text{MHz}$) C_J
	V	MIN V	MAX V	μA	V	V	A	pF
5.0	6.0	9.0	1.0	5.0	12	1.0	0.8	0.4
					13	2.5		

CTLTVS5-4
SURFACE MOUNT SILICON
LOW CAPACITANCE
QUAD TVS/DIODE ARRAY

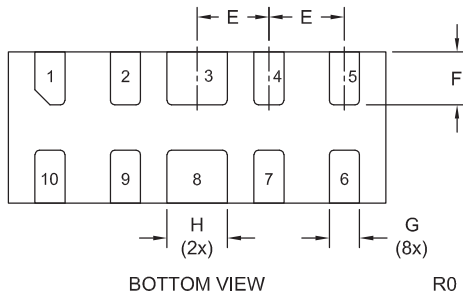
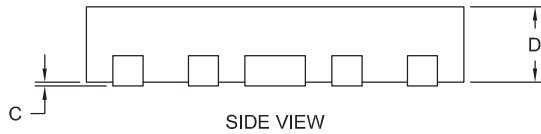


TLM1031 CASE - MECHANICAL OUTLINE



SYMBOL	INCHES		MILLIMETERS	
	MIN	MAX	MIN	MAX
A	0.037	0.041	0.95	1.05
B	0.096	0.100	2.45	2.55
C	0.000	0.002	0.00	0.05
D	0.018	0.022	0.45	0.55
E	0.020		0.50	
F	0.012	0.016	0.30	0.40
G	0.006	0.010	0.15	0.25
H	0.014	0.018	0.35	0.45

TLM1031 (REV:R0)

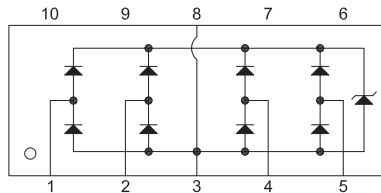


LEAD CODE:

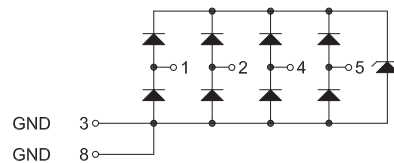
- 1) I/O 6) N/C
- 2) I/O 7) N/C
- 3) Ground 8) Ground
- 4) I/O 9) N/C
- 5) I/O 10) N/C

MARKING CODE: CTL5

PIN CONFIGURATION



SCHEMATIC



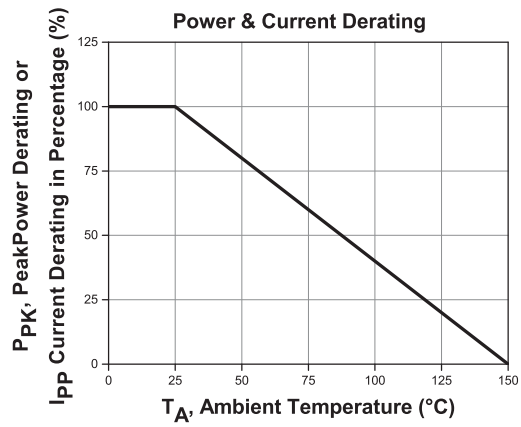
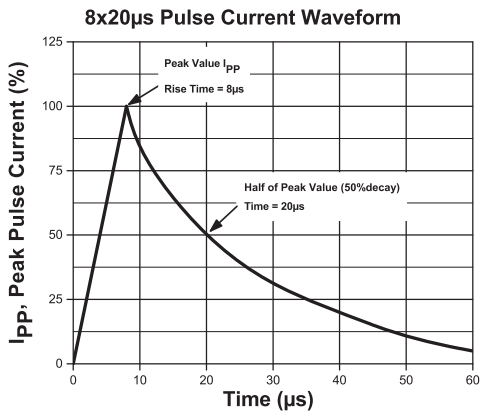
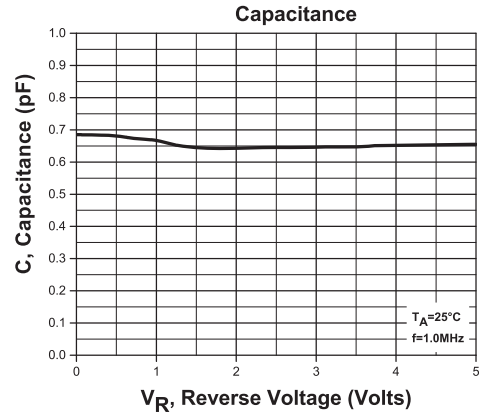
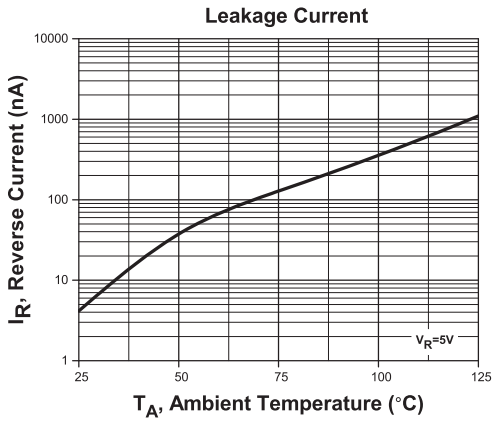
R3 (2-April 2015)

CTLTVS5-4

SURFACE MOUNT SILICON
LOW CAPACITANCE
QUAD TVS/DIODE ARRAY



TYPICAL ELECTRICAL CHARACTERISTICS



R3 (2-April 2015)

CTLTVS5-4

**SURFACE MOUNT SILICON
LOW CAPACITANCE
QUAD TVS/DIODE ARRAY**



SERVICES

- Bonded Inventory
- Custom Electrical Screening
- Custom Electrical Characteristic Curves
- SPICE Models
- Custom Packaging
- Package Base Options
- Custom Device Development/ Multi Discrete Modules (MDM™)
- Bare Die Available for Hybrid Applications

LIMITATIONS AND DAMAGES DISCLAIMER: In no event shall Central be liable for any collateral, indirect, punitive, incidental, consequential, or exemplary damages in connection with or arising out of a purchase order or contract or the use of products provided hereunder, regardless of whether Central has been advised of the possibility of such damages. Excluded damages shall include, but not be restricted to: cost of removal or reinstallation, rework, ancillary costs to the procurement of substitute products, loss of profits, loss of savings, loss of use, loss of data, or business interruption. No claim, suit, or action shall be brought against Central more than two (2) years after the related cause of action has occurred.

In no event shall Central's aggregate liability from any warranty, indemnity, or other obligation arising out of or in connection with a purchase order or contract, or any use of any Central product provided hereunder, exceed the total amount paid to Central for the specific products sold under a purchase order or contract with respect to which losses or damages are claimed. The existence of more than one (1) claim against the specific products sold to Buyer under a purchase order or contract shall not enlarge or extend this limit.

Buyer understands and agrees that the foregoing liability limitations are essential elements of a purchase order or contract and that in the absence of such limitations, the material and economic terms of the purchase order or contract would be substantially different.

R3 (2-April 2015)