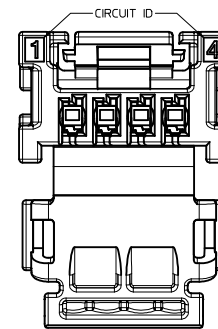
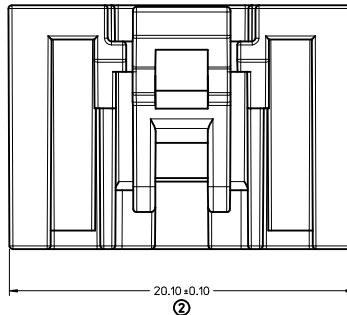
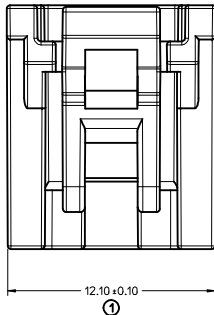
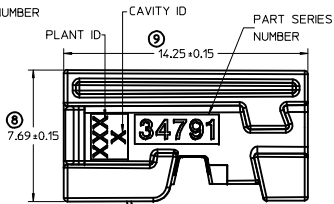
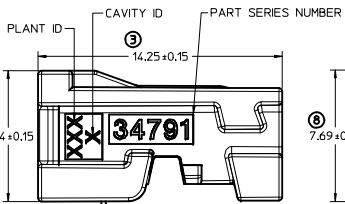


(NON-BRIDGED 4 CKT OPTION SHOWN BELOW)

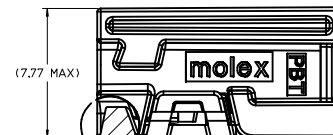
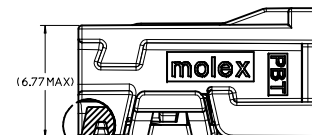
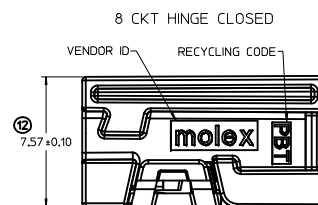
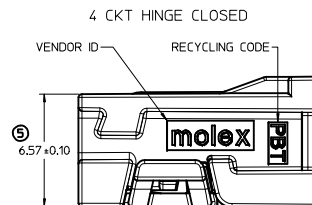
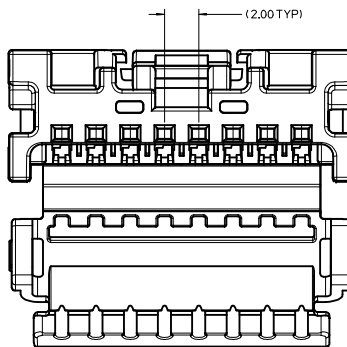
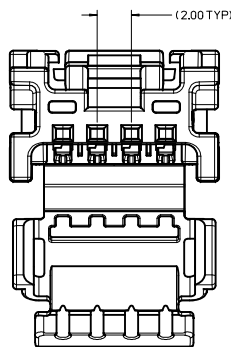
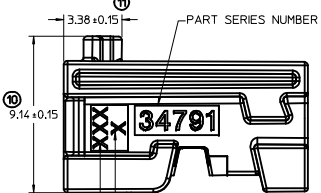
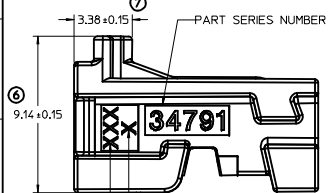
(NON-BRIDGED 8 CKT OPTION SHOWN BELOW)



4 CKT RECEPTACLE SHOWN BELOW.
8 CKT RECEPTACLE HAS SIMILAR
CIRCUIT ID LOCATION.

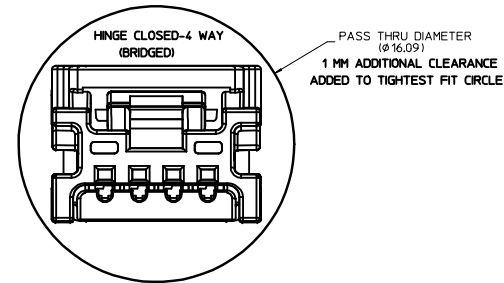
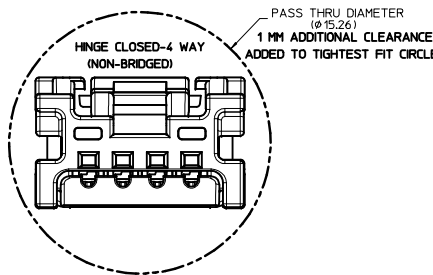
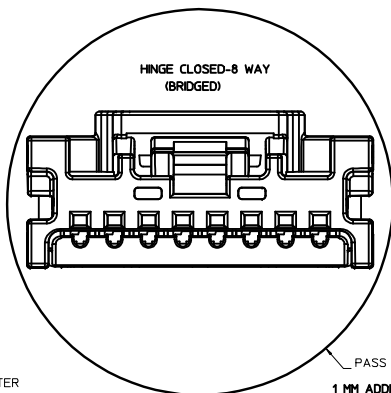
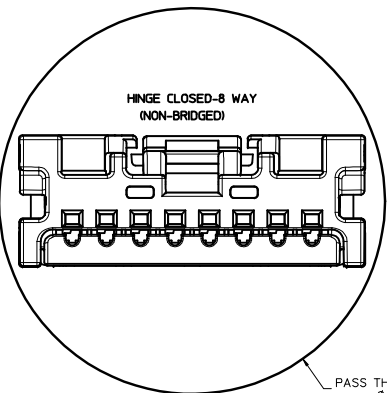
(BRIDGED 4 CKT OPTION SHOWN BELOW)

(BRIDGED 8 CKT OPTION SHOWN BELOW)



CUTAWAY SHOWING LOWEST
POINT ASSEMBLED HINGE

CUTAWAY SHOWING LOWEST
POINT ASSEMBLED HINGE



USCAR UPDATES EIC NO. UAU2013-0532 DRAWN BY: JDUJ CHECKED BY: BDLCK APPROVED BY: SMARCEAU DATE: 2011/11/21	2012/10/04 CHYK APPR:RBALMAN	2012/10/25 DESCRIPTION	QUALITY SYMBOLS ∇=0 ∇=0 ∇=0	GENERAL TOLERANCES (UNLESS SPECIFIED) mm INCH 4 PLACES ± --- ± --- 3 PLACES ± --- ± --- 2 PLACES ± --- ± --- 1 PLACE ± --- ± --- ANGULAR ± ---°	DIMENSION STYLE MM ONLY DRAWN BY: JDUJ DATE: 2010/06/24 CHECKED BY: BDLCK DATE: 2010/06/24 APPROVED BY: SMARCEAU DATE: 2011/11/21	SCALE: 7:1 DESIGN UNITS: METRIC THIRD ANGLE PROJECTION	TITLE: MINISO SINGLE ROW RECEPTACLE ASSEMBLY SALES DRAWING MOLEX INCORPORATED DOCUMENT NO.: SD-34791-001 SHEET NO.: 2 OF 3
	DRAFT WHERE APPLICABLE MUST REMAIN WITHIN DIMENSIONS			SEE TABLE		THIS DRAWING CONTAINS INFORMATION THAT IS PROPRIETARY TO MOLEX INCORPORATED AND SHOULD NOT BE USED WITHOUT WRITTEN PERMISSION	
	PASS THRU DIAMETER Ø22.52 1 MM ADDITIONAL CLEARANCE ADDED TO TIGHTEST FIT CIRCLE			PASS THRU DIAMETER Ø15.26 1 MM ADDITIONAL CLEARANCE ADDED TO TIGHTEST FIT CIRCLE		PASS THRU DIAMETER Ø16.09 1 MM ADDITIONAL CLEARANCE ADDED TO TIGHTEST FIT CIRCLE	
	HINGE CLOSED-8 WAY (NON-BRIDGED)			HINGE CLOSED-4 WAY (NON-BRIDGED)		HINGE CLOSED-4 WAY (BRIDGED)	

MINI50 RECEPTACLE ASSEMBLIES

MATERIAL NUMBER BULK PACKAGING PK-31301-538	LOCK BRIDGE OPTION	CONFIGURATION	CIRCUIT	POL	COLOR	TOOLED	MATING COMPONENT								
							SURFACE MOUNT TECHNOLOGY (SMT) HEADER			VERTICAL THRU HOLE HEADER			RIGHT ANGLE THRU HOLE HEADERS		
							TAPE AND REEL PACKAGING PK-31301-786	TUBE PACKAGING PK-31301-688	TOOLED	TRAY PACKAGING PK-31301-440	TUBE PACKAGING PK-31301-688	TOOLED *SEE NOTE 3g.	TRAY PACKAGING PK-31301-440	TUBE PACKAGING PK-31301-688	TOOLED *SEE NOTE 3g.
34791-0040	NO	USCAR COMPATIBLE	4	A	BLACK	YES	34912-8040	34912-9040	YES	34792-0040	34792-9040	NO	34793-0040	34793-9040	NO
34791-0041	NO	USCAR COMPATIBLE	4	B	GRAY	YES	34912-8041	34912-9041	YES	34792-0041	34792-9041	NO	34793-0041	34793-9041	NO
34791-0042	NO	USCAR COMPATIBLE	4	C	BROWN	YES	34912-8042	34912-9042	YES	34792-0042	34792-9042	NO	34793-0042	34793-9042	NO
34791-0043	NO	USCAR COMPATIBLE	4	D	GREEN	YES	34912-8043	34912-9043	YES	34792-0043	34792-9043	NO	34793-0043	34793-9043	NO
34791-0080	NO	USCAR COMPATIBLE	8	A	BLACK	NO	34912-8080	34912-9080	NO	34792-0080	34792-9080	NO	34793-0080	34793-9080	NO
34791-0081	NO	USCAR COMPATIBLE	8	B	GRAY	NO	34912-8081	34912-9081	NO	34792-0081	34792-9081	NO	34793-0081	34793-9081	NO
34791-0082	NO	USCAR COMPATIBLE	8	C	BROWN	NO	34912-8082	34912-9082	NO	34792-0082	34792-9082	NO	34793-0082	34793-9082	NO
34791-0140	YES	USCAR COMPATIBLE	4	A	BLACK	NO	34912-8040	34912-9040	YES	34792-0040	34792-9040	NO	34793-0040	34793-9040	NO
34791-0141	YES	USCAR COMPATIBLE	4	B	GRAY	NO	34912-8041	34912-9041	YES	34792-0041	34792-9041	NO	34793-0041	34793-9041	NO
34791-0142	YES	USCAR COMPATIBLE	4	C	BROWN	NO	34912-8042	34912-9042	YES	34792-0042	34792-9042	NO	34793-0042	34793-9042	NO
34791-0143	YES	USCAR COMPATIBLE	4	D	GREEN	NO	34912-8043	34912-9043	YES	34792-0043	34792-9043	NO	34793-0043	34793-9043	NO
34791-0180	YES	USCAR COMPATIBLE	8	A	BLACK	NO	34912-8080	34912-9080	NO	34792-0080	34792-9080	NO	34793-0080	34793-9080	NO
34791-0181	YES	USCAR COMPATIBLE	8	B	GRAY	NO	34912-8081	34912-9081	NO	34792-0081	34792-9081	NO	34793-0081	34793-9081	NO
34791-0182	YES	USCAR COMPATIBLE	8	C	BROWN	NO	34912-8082	34912-082	NO	34792-0082	34792-9082	NO	34793-0082	34793-9082	NO

CTX50 UNSEALED RECEPTACLE TERMINALS

PART NUMBER		MATERIAL	WIRE GAGE (mm ²)	GRIP
D-WIND (LEFT PAYOFF)	B-WIND (RIGHT PAYOFF)			
560023-0421	560023-0423	COPPER ALLOY	0.22 - 0.35	MEDIUM
560023-0422	560023-0424	COPPER ALLOY	0.08 - 0.13	SMALL

USCAR UPDATES IEC NO. UAU2013-0532 DRAWN BY: YOUNG01 2012/10/04 CHKD: APPR:RBALMAN 2012/10/29 REV:	QUALITY SYMBOLS	GENERAL TOLERANCES (UNLESS SPECIFIED)	DIMENSION STYLE	SCALE	DESIGN UNITS	THIRD ANGLE PROJECTION	
	▽=0	4 PLACES ±	MM ONLY	5:1	METRIC	☉	
	▽=0	3 PLACES ±					
	▽=0	2 PLACES ±					
		1 PLACE ±					
		0 PLACE ±					
		ANGULAR ±					
		DRAFT WHERE APPLICABLE MUST REMAIN WITHIN DIMENSIONS					
			DRAWN BY: JDUNAJ	DATE: 2010/06/24	TITLE: MINI50 SINGLE ROW RECEPTACLE ASSEMBLY SALES DRAWING		
			CHECKED BY: BDICK	DATE: 2010/06/24			
			APPROVED BY: SMARCEAU	DATE: 2011/11/21			
			MATERIAL NO. SEE TABLE	DOCUMENT NO. SD-34791-001			
			SIZE D			SHEET NO. 3 OF 3	
			THIS DRAWING CONTAINS INFORMATION THAT IS PROPRIETARY TO MOLEX INCORPORATED AND SHOULD NOT BE USED WITHOUT WRITTEN PERMISSION				