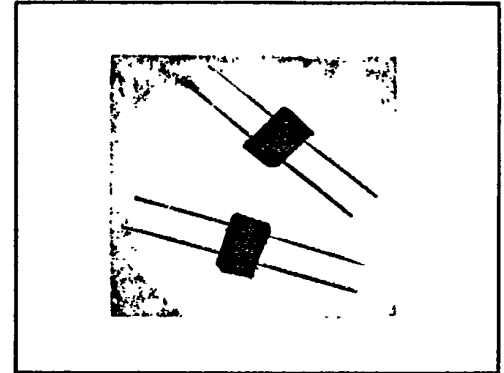


SDA 276

bridge rectifier assembly

- * PIV 50 TO 1000 VOLTS/AVERAGE OUTPUT CURRENT 1.5 A
- * PIV 1500 TO 3000 VOLTS/AVE. OUTPUT CURRENT 360mA
- * OPERATING AND STORAGE TEMPERATURE -55°C TO $+150^{\circ}\text{C}$
- * ALSO AVAILABLE WITH "FAST" RECOVERY CHARACTERISTICS UP TO 1000 VOLTS
- * SUBMINIATURE DESIGN FOR PACKAGING VERSATILITY



SSDI introduces a new and complete series of Single Phase Bridge Rectifier Assemblies. These units are designed in special packages to provide maximum thermal conductivity and simple installation.

Consult your factory representative for engineering assistance.

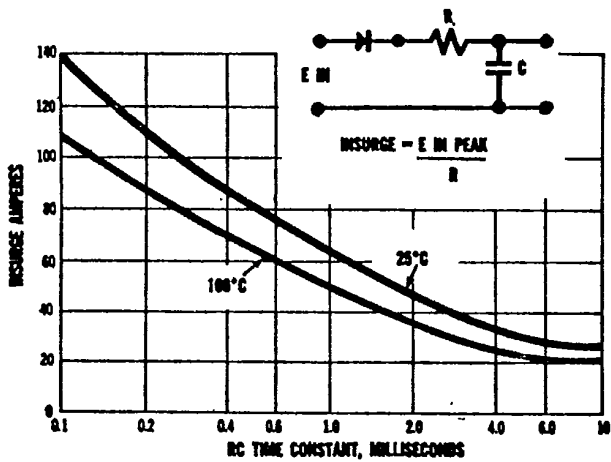
SEMTECH EQUIVALENT: SBR05 through SBR10
 UNITRODE EQUIVALENT: 673-1 through 673-12

SPECIFICATIONS SUBJECT TO CHANGE WITHOUT NOTICE.

| Type | PIV per leg | Sine Wave RMS input Voltage Max. | Average DC Output Amps TC = (case temp.) | | Peak 1 Cycle Forward Surge | VF Max per leg @ ADC 1.5A | Reverse Current (I_R Max. per leg. @ PIV) | |
|---------|-------------|----------------------------------|--|-------|----------------------------|------------------------------|--|------|
| | | | 55°C | 100°C | | | 25°C | 25°C |
| | VOLTS | VOLTS | AMPS | AMPS | AMPS | VOLTS | UA | UA |
| SDA276A | 50 | 35 | 1.5 | 1.0 | 10 | 1.2 | 2 | 40 |
| SDA276B | 100 | 70 | 1.5 | 1.0 | 10 | 1.2 | 2 | 40 |
| SDA276C | 200 | 140 | 1.5 | 1.0 | 10 | 1.2 | 2 | 40 |
| SDA276D | 400 | 280 | 1.5 | 1.0 | 10 | 1.2 | 2 | 40 |
| SDA276E | 600 | 420 | 1.5 | 1.0 | 10 | 1.2 | 2 | 40 |
| SDA276F | 800 | 560 | 1.5 | 1.0 | 10 | 1.2 | 2 | 40 |
| SDA276G | 1000 | 700 | 1.5 | 1.0 | 10 | 1.2 | 2 | 40 |
| SDA276H | 1500 | 1050 | .36 | .24 | 2.5 | 3.5 | 2 | 40 |
| SDA276J | 2000 | 1400 | .36 | .24 | 2.5 | 3.5 | 2 | 40 |
| SDA276K | 2500 | 1750 | .36 | .24 | 2.5 | 3.5 | 2 | 40 |
| SDA276L | 3000 | 2100 | .36 | .24 | 2.5 | 3.5 | 2 | 40 |

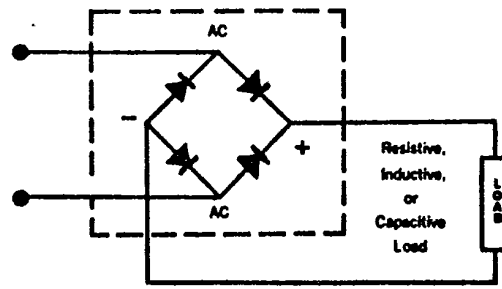
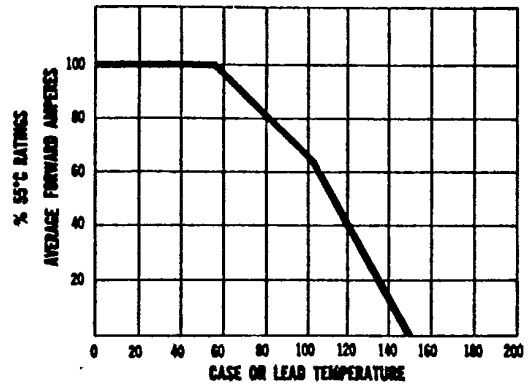
SSDI SOLID STATE DEVICES, INC.

MAXIMUM RATINGS FOR CAPACITY LOADS

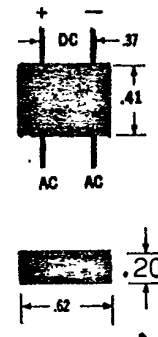
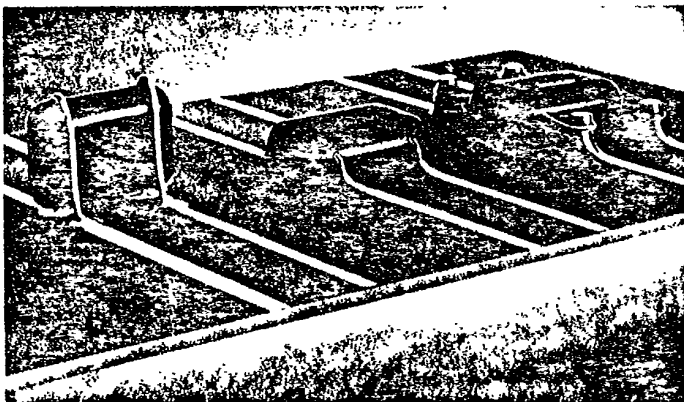


FOR FAST RECOVERY BRIDGES + 2

ALL BRIDGES
TEMPERATURE DERATING CURVE



Typical Bridge Circuit

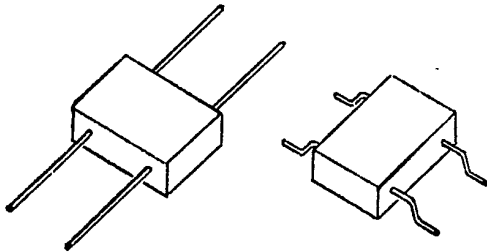


Lead Spacing Measured Center to Center

Tolerance ±.030

| | |
|---|--|
| <h1 style="margin: 0;">SDA356</h1> <h2 style="margin: 0;">FAST & ULTRA FAST 1 AMP RECTIFIER ASSEMBLY</h2> | |
| <p style="font-size: small;">14830 Valley View Avenue La Mirada California 90638 (213) 921-9660 TWX 910-583-4807 FAX 213-921-2396</p> | |

CASE STYLE



FEATURES

- REVERSE RECOVERY TIME 30-70 N SEC MAX
- AVERAGE OUTPUT CURRENT 1.0 AMPS
- PIV 100 TO 1200 VOLTS
- HERMETICALLY SEALED INTERNAL DISCRETES
- ALL WELDED INTERNAL INTERCONNECTS
- THERMALLY CONDUCTIVE EPOXY ENCAPSULATED
- SURFACE OR RADIAL MOUNTING*

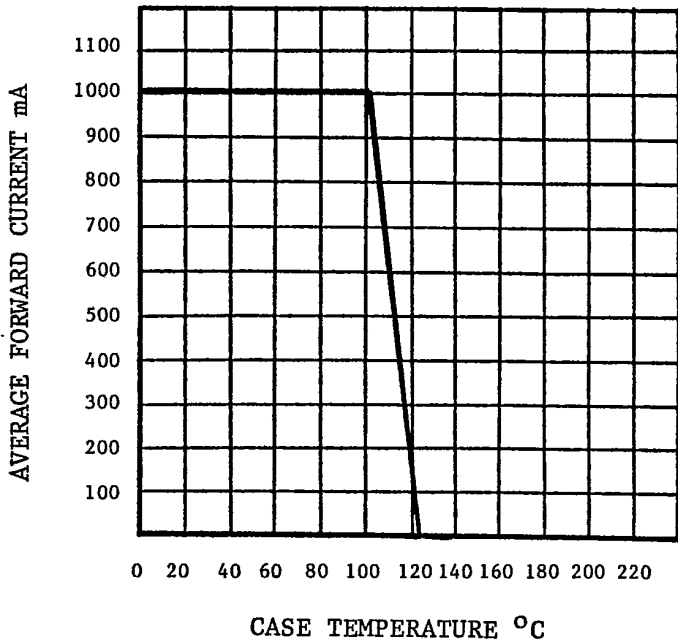
SSDI introduces a new and complete line of Single Phase, Rectifier Bridge Assemblies designed for Fast and Ultra Fast reverse recovery time. These bridges are encapsulated with thermal conductive epoxy to provide maximum thermal conductivity. The series features SSDI's exclusive glass passivated rectifier cell and all welded internal interconnects for high reliability and mechanical strength.

*For surface mounting add -2 to part number.

| Type | PIV per leg | Sine Wave RMS input Voltage Max. | Average DC Output Amps TC = (case temp.) | | Reverse * Recovery Time T _{rr} | Peak 1 Cycle Forward Surge | Peak Recurrent Forward | VF Max per leg @ ADC 1.0 A | Reverse Current (I _R Max. per leg. @ PIV) | | |
|---------|-------------|----------------------------------|--|-------|---|----------------------------|------------------------|-------------------------------|--|-------|-----|
| | | | 50°C | 100°C | | | | | 25°C | 100°C | |
| | | | AMPS | AMPS | | | | | UA | UA | |
| SDA356B | F | 100 | 70 | 1.0 | 1.0 | 100 | 25 | 6 | 1.1 | 5 | 100 |
| | UF | 100 | 70 | 1.0 | 1.0 | 30 | 25 | 6 | 1.0 | 5 | 100 |
| SDA356D | F | 200 | 140 | 1.0 | 1.0 | 100 | 25 | 6 | 1.1 | 5 | 100 |
| | UF | 200 | 140 | 1.0 | 1.0 | 30 | 25 | 6 | 1.0 | 5 | 100 |
| SDA356G | F | 400 | 280 | 1.0 | 1.0 | 100 | 25 | 6 | 1.1 | 5 | 100 |
| | UF | 400 | 280 | 1.0 | 1.0 | 60 | 25 | 6 | 1.5 | 5 | 100 |
| SDA356J | F | 600 | 420 | 1.0 | 1.0 | 100 | 25 | 6 | 1.1 | 5 | 100 |
| | UF | 600 | 420 | 1.0 | 1.0 | 60 | 25 | 6 | 1.5 | 5 | 100 |
| SDA356K | F | 800 | 560 | 1.0 | 1.0 | 100 | 25 | 6 | 1.1 | 5 | 100 |
| | UF | 800 | 560 | 1.0 | 1.0 | 60 | 25 | 6 | 1.5 | 5 | 100 |
| SDA356M | F | 1000 | 700 | 1.0 | 1.0 | 100 | 25 | 6 | 1.3 | 5 | 100 |
| | UF | 1000 | 700 | 1.0 | 1.0 | 70 | 25 | 6 | 1.9 | 5 | 100 |
| SDA356N | F | 1200 | 840 | 1.0 | 1.0 | 100 | 25 | 6 | 1.3 | 5 | 100 |
| | UF | 1200 | 840 | 1.0 | 1.0 | 70 | 25 | 6 | 1.9 | 5 | 100 |

NOTE: All specifications subject to change without notice.

TEMPERATURE DERATING CURVE



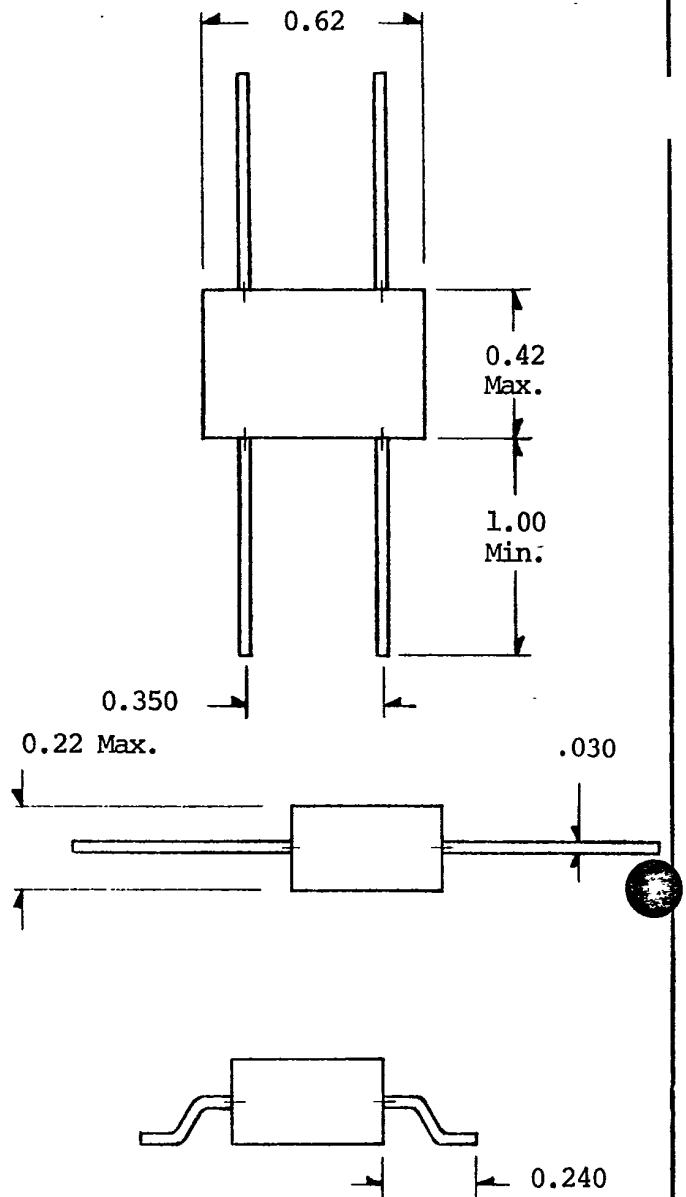
DESIGN NOTES

Insulation Resistance R_{DC} 10 KM Ω Minimum

Operating Temperature Top -55 to +125 °C

Thermal Resistance Junction to Lead
(each leg, L= 3/8") $R_{\theta JL}$ 50°C/W

Reverse Recovery Time
IF= 500 mA, IR= 1.0 A, Irr= 250 mA

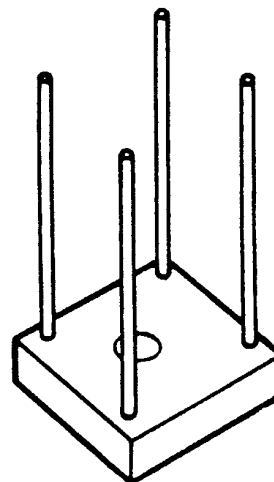


Tolerance XX.03
XXX.020

SSDI Bridge Rectifier Assembly

SINGLE PHASE 10 AMPS SDA 165 SERIES

- Average output 10 Amps
- PIV 50 to 1000 Volts
- Small Size
- Maximum Thermal Resistance
2.5° C/Watt
- Hermetically Sealed Rectifier Cells
- Easy P.C. Mounting



SSDI introduces a new and complete line of single phase rectifier bridge assemblies. They are designed in a special case to provide maximum thermal conductivity and simple installation.

Consult your factory representative for engineering assistance.

| Type | PIV per leg | Sine Wave RMS input Voltage Max | Average DC Output Amps TC = (case temp.) | | | Average DC Output Amps TA = Ambient Temp. (No heat Sink) | | | Peak 1 Cycle Forward surge | Peak Recurrent Forward | VF Max. per leg @ 3 ADC | Reverse Current (I _R Max. per leg. @ PIV) μ s | |
|---------|-------------|---------------------------------|---|-------|-------|--|------|-------|----------------------------|------------------------|-------------------------|--|-------|
| | | | 55°C | 100°C | 125°C | 25°C | 55°C | 100°C | | | | 25°C | 100°C |
| SDA165A | 50 | 35 | 10 | 7.5 | 5 | 4 | 3 | 2 | 150 | 75 | 1 | 5 | 100 |
| SDA165B | 100 | 70 | 10 | 7.5 | 5 | 4 | 3 | 2 | 150 | 75 | 1 | 5 | 100 |
| SDA165C | 200 | 140 | 10 | 7.5 | 5 | 4 | 3 | 2 | 150 | 75 | 1 | 5 | 100 |
| SDA165D | 400 | 280 | 10 | 7.5 | 5 | 4 | 3 | 2 | 150 | 75 | 1 | 5 | 100 |
| SDA165E | 600 | 420 | 10 | 7.5 | 5 | 4 | 3 | 2 | 150 | 75 | 1 | 5 | 100 |
| SDA165F | 800 | 560 | 10 | 7.5 | 5 | 4 | 3 | 2 | 150 | 75 | 1 | 5 | 100 |
| SDA165G | 1000 | 700 | 10 | 7.5 | 5 | 4 | 3 | 2 | 150 | 75 | 1 | 5 | 100 |

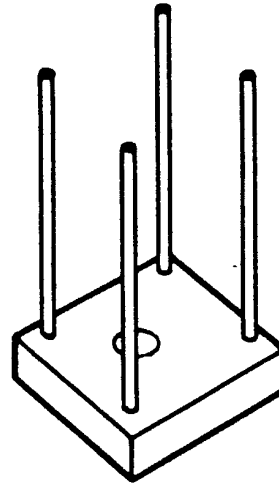
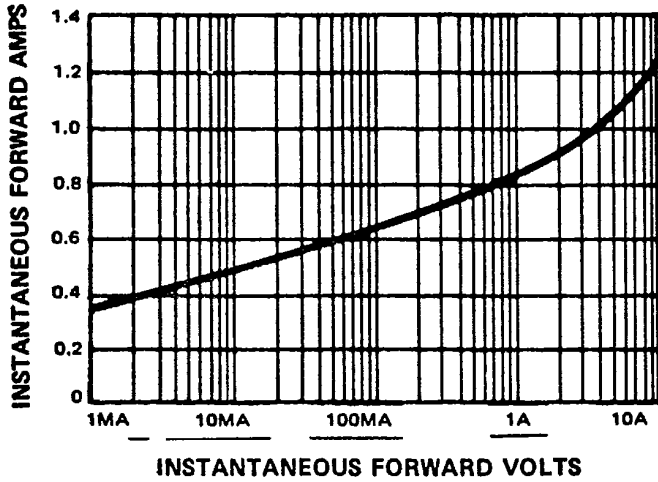
SSDI

SOLID STATE DEVICES, INC.

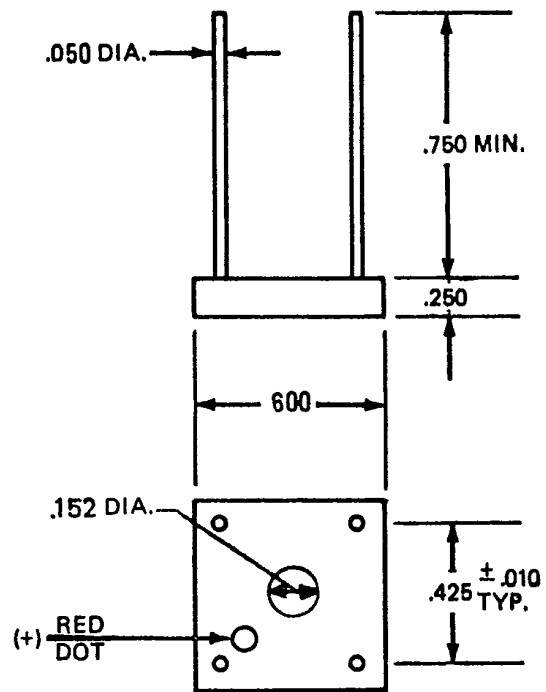
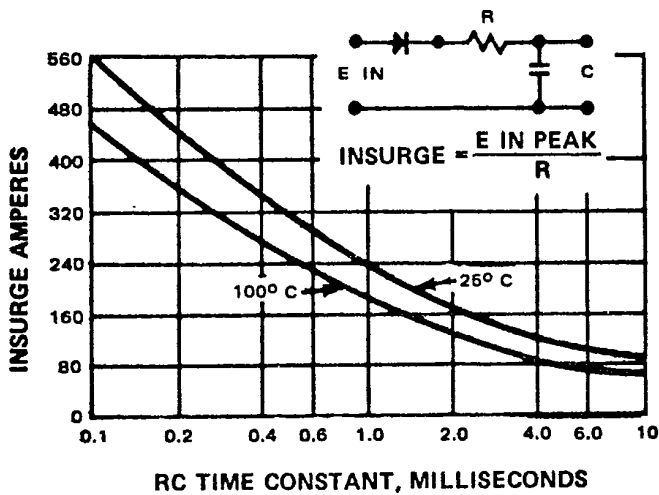


application notes

TYPICAL DYNAMIC FORWARD CHARACTERISTICS



MAXIMUM RATINGS FOR CAPACITY LOADS



TOLERANCE XX ± .03
 XXX ± .020
 FRACTIONAL = NOMINAL DIMENSION



SOLID STATE DEVICES, INC.