



TAI-SAW TECHNOLOGY CO., LTD.

No. 3, Industrial 2nd Rd., Ping-Chen Industrial District,
Taoyuan, 324, Taiwan, R.O.C.

TEL: 886-3-4690038 FAX: 886-3-4697532

E-mail: tstsales@mail.taisaw.com Web: www.taisaw.com

Approval Sheet For Product Specification

Issued Date:

Product Name: SAW Filter 2122.5MHz

TST Parts No.:TA0228A

Customer Parts No.:_____

Company: _____
Division: _____
Approved by : _____
Date: _____

Checked by: _____ Elvis Chiu

Approval by: _____ Francis Chen

Date: _____ 2002/11/29



TAI-SAW TECHNOLOGY CO., LTD.

No. 3, Industrial 2nd Rd., Ping-Chen Industrial District,
Taoyuan, 324, Taiwan, R.O.C.

TEL: 886-3-4690038 FAX: 886-3-4697532

E-mail: tstsales@mail.taisaw.com Web: www.taisaw.com

SAW Filter 2122.5 MHz

MODEL NO.: TA0228A

REV. NO.:1

A. MAXIMUM RATING:

1. Input Power Level: 10 dB_m
2. DC voltage: 0 V
3. Operating Temperature: -20°C to +75°C
4. Storage Temperature: -40°C to +85°C

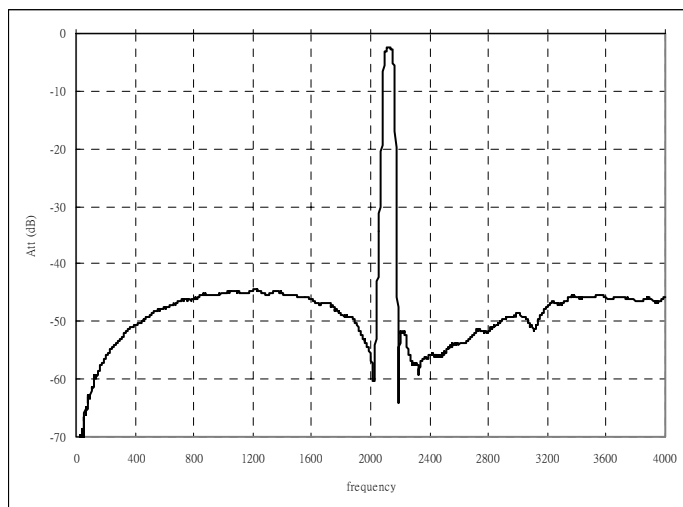
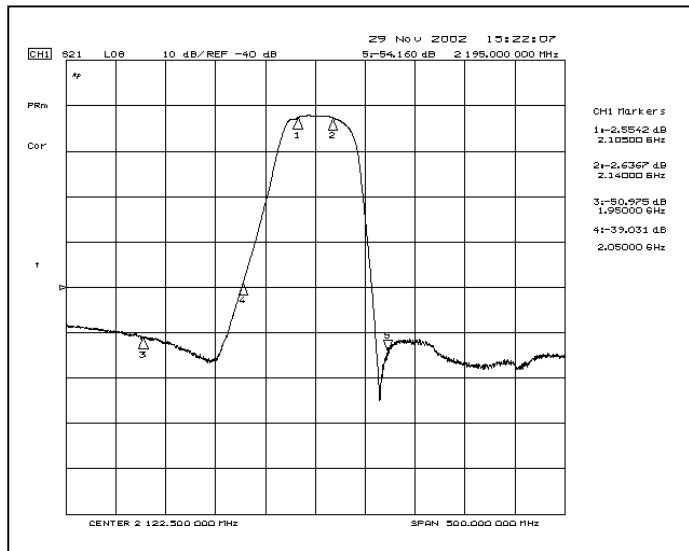
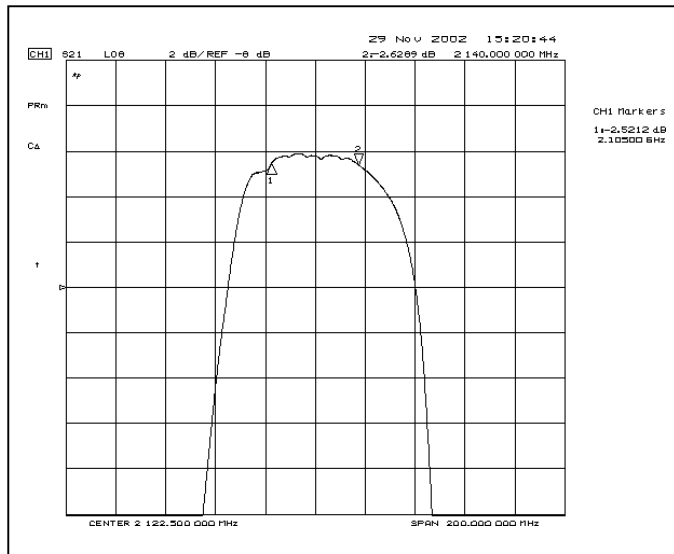
RoHS Compliant
Lead free
Lead-free soldering

B. ELECTRICAL CHARACTERISTICS:

Characteristics			Specification			Note
			Min.	Typ.	Max	
Center frequency	F_c	MHz	-	2122.5	-	-
Insertion loss	2105~2140 MHz	dB	-	3.0	4.0	-
Amplitude ripple	2105~2140 MHz	dB	-	1.1	2.0	-
V.S.W.R	2105~2140 MHz		-	1.5	2.4	-
Group delay ripple	2105~2140 MHz	ns		7	16	
Attenuation:(Reference level from 0 dB)						
	0 ~ 1950MHz	dB	33	42	-	-
	1950 ~ 2050MHz	dB	25	37	-	-
	2195 ~ 2295 MHz	dB	25	51	-	-
	2295 ~ 3400 MHz	dB	31	50	-	-
	3400 ~ 4000 MHz	dB	23	45	-	-
Impedance at F_c	Input	$Z_{IN}=R_{IN} // C_{IN}$	50Ω // 0 PF			1
	Output	$Z_{OUT}=R_{OUT} // C_{OUT}$	50Ω // 0 PF			1

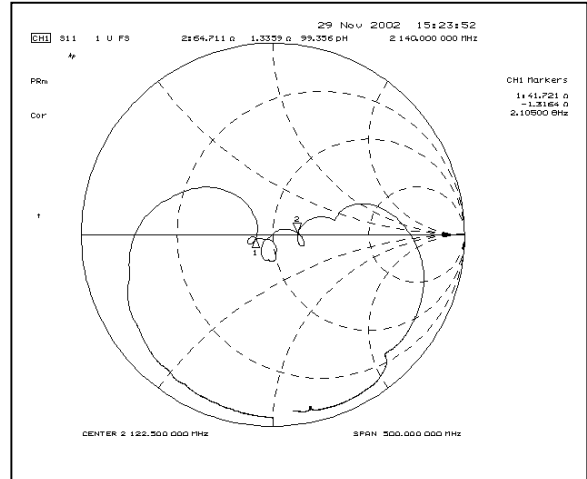
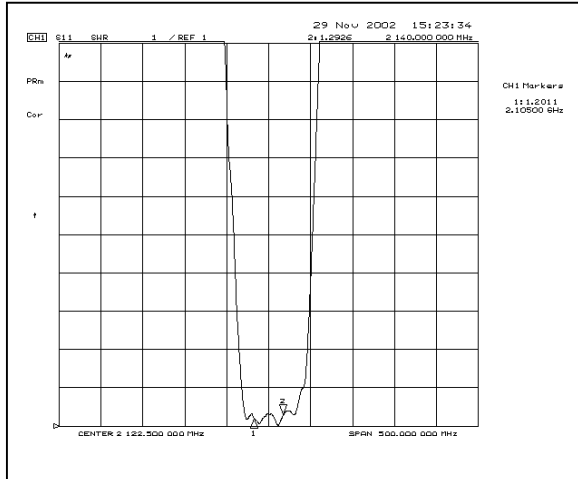
Note1. No matching network required for operation at 50

C. Transfer Function :

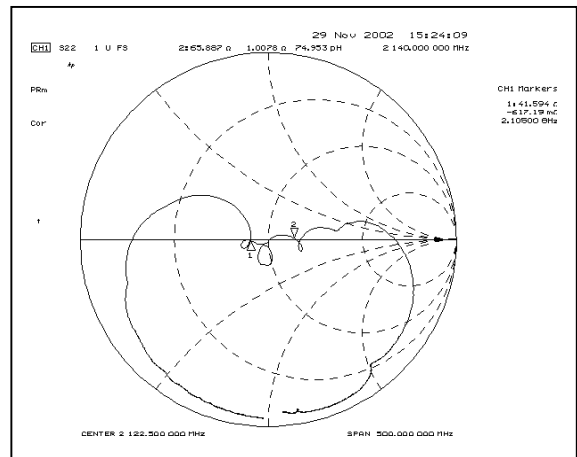
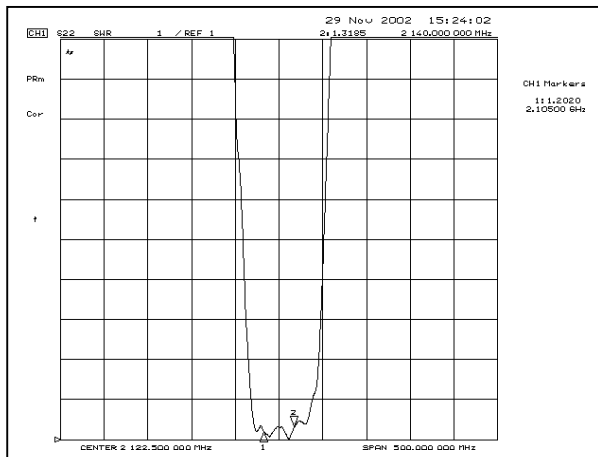


D. Reflections Functions :

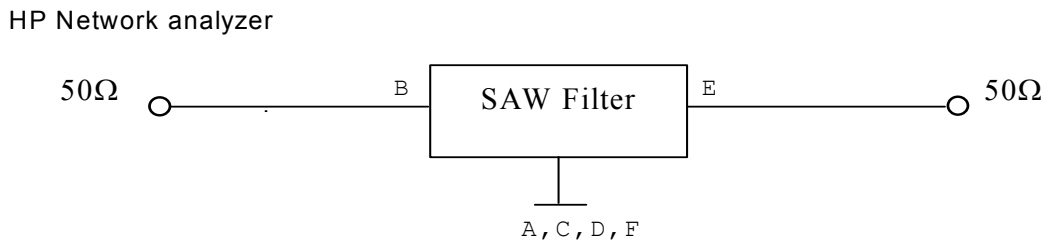
S11



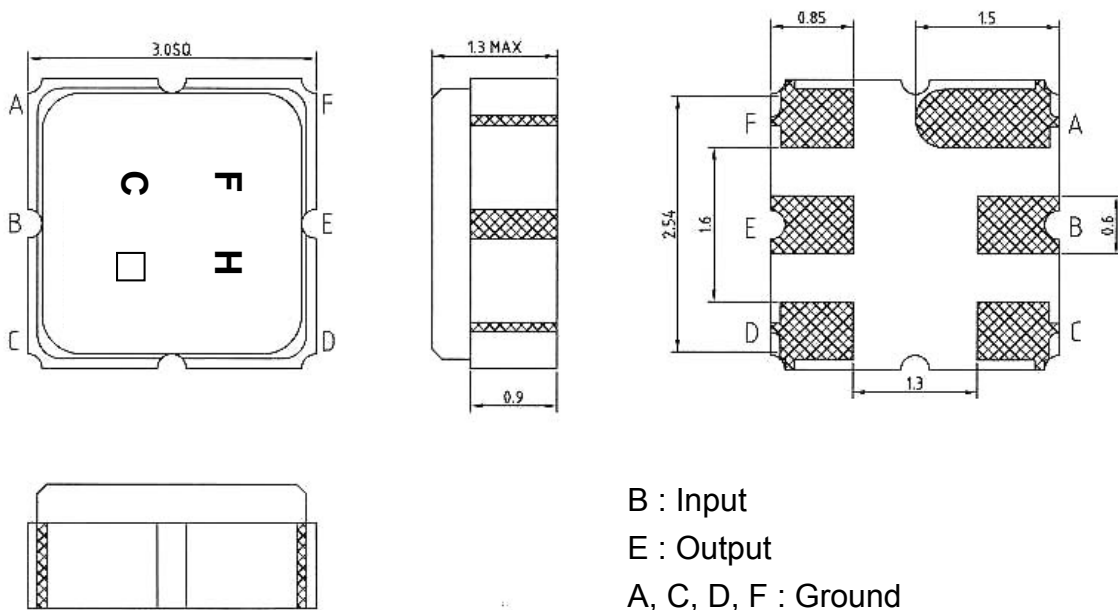
S22



E. MEASUREMENT CIRCUIT:



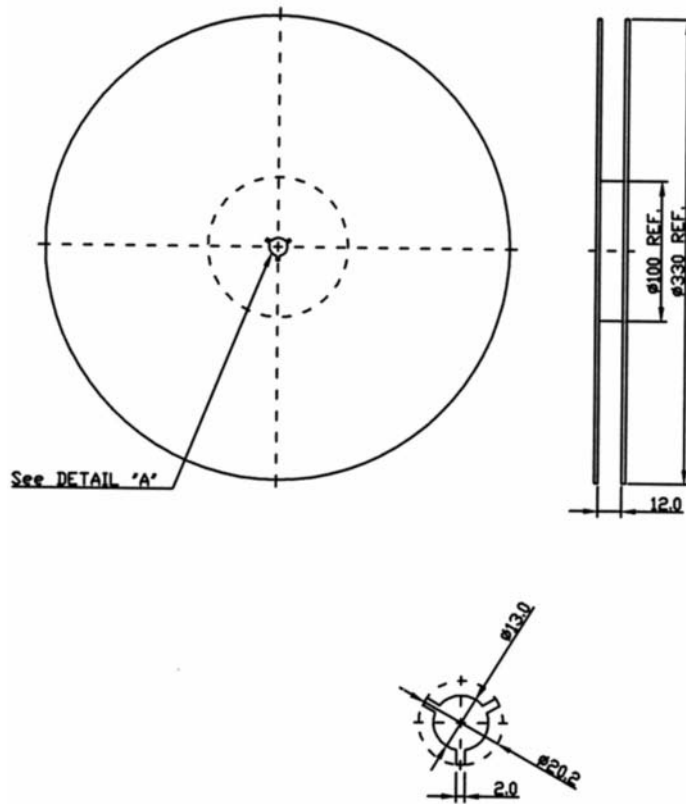
F. OUTLINE DRAWING:



B : Input
 E : Output
 A, C, D, F : Ground
 □ : Date code
 Unit : mm

G. PACKING:

1. REEL DIMENSION



2. TAPE DIMENSION

