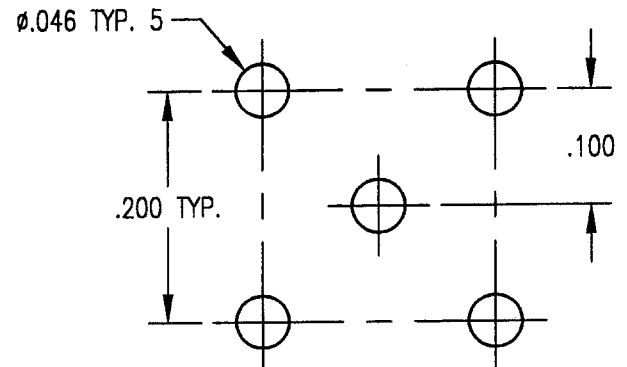
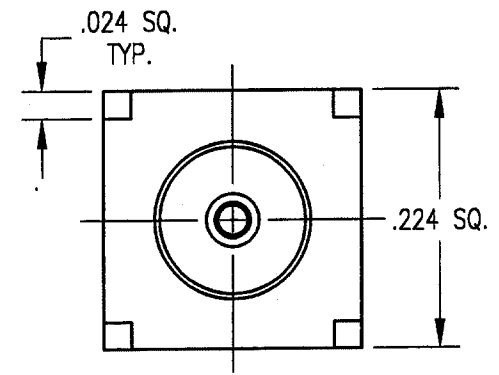
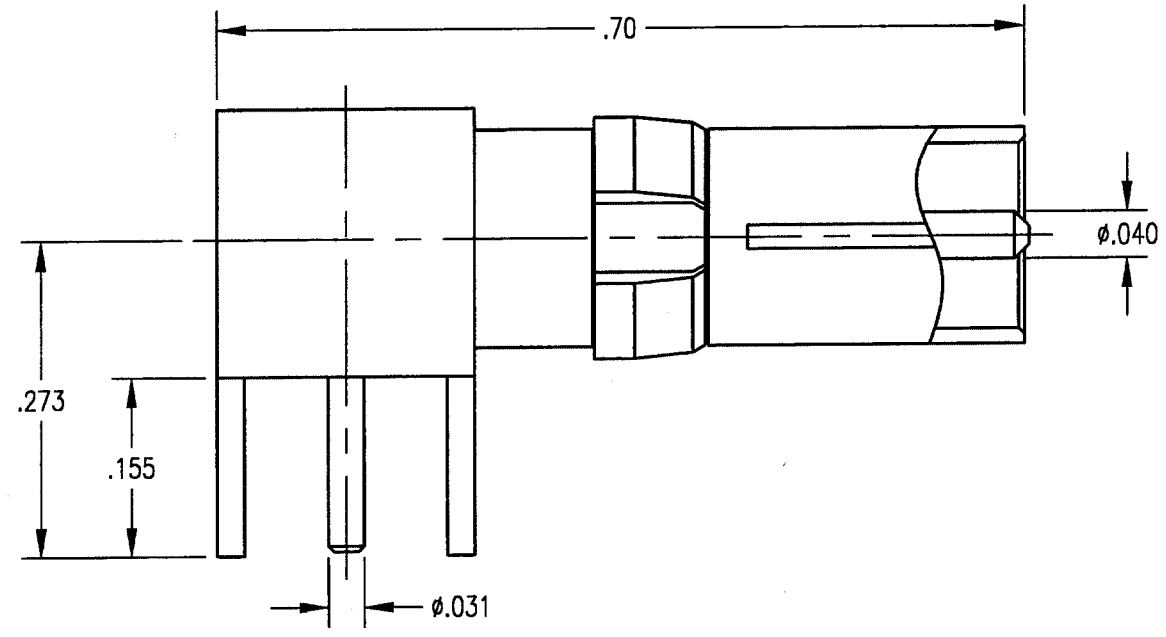


DWG. NO. 403-010-6040G			
REV	DESCRIPTION	BY	APPD
B	ECN 2325	JMC	[Signature]
		DATE	
		12/16/99	



MOUNTING HOLES

NOTES:

- MATERIALS:
 REAR BODY AND CONTACT: BRASS PER ASTM B16
 FRONT BODY: BERYLLIUM COPPER PER ASTM B196
 CLIP RING: BERYLLIUM COPPER PER ASTM B194
 INSULATOR: TEFLON PER ASTM D1710
- FINISH:
 BODIES AND CONTACT: .000030 MIN. GOLD PER MIL-G-45204
 OVER .000050 MIN. NICKEL PER QQ-N-290
 CLIP RING: .000100 MIN. NICKEL PER QQ-N-290
 OVER COPPER FLASH
- FOR USE IN DIN 41612 HOUSING.

PER ASME Y14.5M-1994 UNLESS OTHERWISE SPECIFIED: DIMENSIONS ARE IN INCHES OR INCHES/MM				Litton Winchester Electronics/RETCONN <small>400 Park Road Waterbury, Connecticut 06795</small>	
TOLERANCES: DECIMALS .XX ± .01/0.254 .XXX ± .005/0.127 ANGLES ± 2°				SCALE: 6:1	
CUSTOMER DRAWING				TITLE	
				40 SERIES RIGHT ANGLE RECEPTACLE	
DRAWN	DATE	CHECKED	DATE	A	403-010-6040G
KJT	10/15/97	JMC	10/15/97		
APPROVED	DATE	APPROVED	DATE	SHT.	OF
AT	10/15/97	AT	10/15/97	1	1
				REV.	B