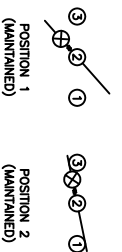


**SCHEMATIC**



**SPECIFICATIONS**

**FUNCTION:**  
1P1T OFF-ON

**RATINGS:**  
ANSI/UL 1054 and CAN/CSA C22.2 No. 55 (E194579):  
16A 125VAC [UR, CLR]  
10A 250VAC [UR, CLR]  
1/3HP 125/250VAC [UR, CLR]

EN 61058-1:2002:  
6(C)A 250V~ $\mu$  1E4 T125/S5 [ENEC14]

**ILLUMINATION VOLTAGE:**  
125V

**CONTACT RESISTANCE:**  
Initial: 35m $\Omega$ ; Max. at 50VAC

**INSULATION RESISTANCE:**  
100M $\Omega$  Min. at 500VDC

**DIELECTRIC STRENGTH:**  
1,500VAC For 1 Minute

**ELECTRICAL LIFE:**  
6,000 Cycles [UR, CLR]  
10,000 Cycles [ENEC14]

**TEMPERATURE:**  
Operating: -20°C to 85°C

**APPROVALS:**



**COLORS AND MARKINGS**

**BODY:**  
Black

**ACTUATOR:**  
Transparent Red

**MARKINGS:**  
I/O Vertical (1)

**MARKING COLOR:**  
White

**MATERIALS**

**BODY:**  
Polyamide 6/6 (PA66), UL94 V-2

**ACTUATOR:**  
Polycarbonate (PC), UL94 V-2

**LAMP CARRIER:**  
Polyamide 6/6 (PA66), UL94 V-2

**LAMP:**  
Neon Bulb

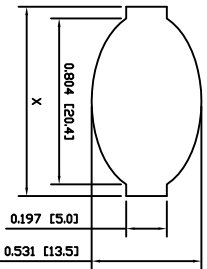
**SPRING:**  
Steel

**SPRING COVER:**  
Steel

**CONTACTS:**  
Silver Alloy Plated Copper

**TERMINALS:**  
Silver Plated Copper  
Silver Plated Brass  
Brass

**SUGGESTED PANEL CUTOUT**



PANEL THICKNESS	X
0.030~0.049 [0.75~1.25]	0.917 [23.3]
0.049~0.079 [1.25~2.00]	0.929 [23.6]
0.079~0.118 [2.00~3.00]	0.941 [23.9]

ACTUATOR BODY COLORS MATERIALS SPECIFICATIONS REFERENCES	REV.	DATE	BY
A	09/08/11	CAB	
A	09/08/11	CAB	
A	09/08/11	CAB	
A	09/08/11	CAB	

1	2	3

4	5	6	7	8

DIMENSIONS	INCHES [MILLIMETERS]
GENERAL TOLERANCES	$\pm 0.008$ [ $\pm 0.2$ ] / $\pm 1^\circ$
SCALE	DRAWING NOT TO SCALE

RE111C1021-116	DATE	AUGUST 27, 2013	REVISION	A
----------------	------	-----------------	----------	---

