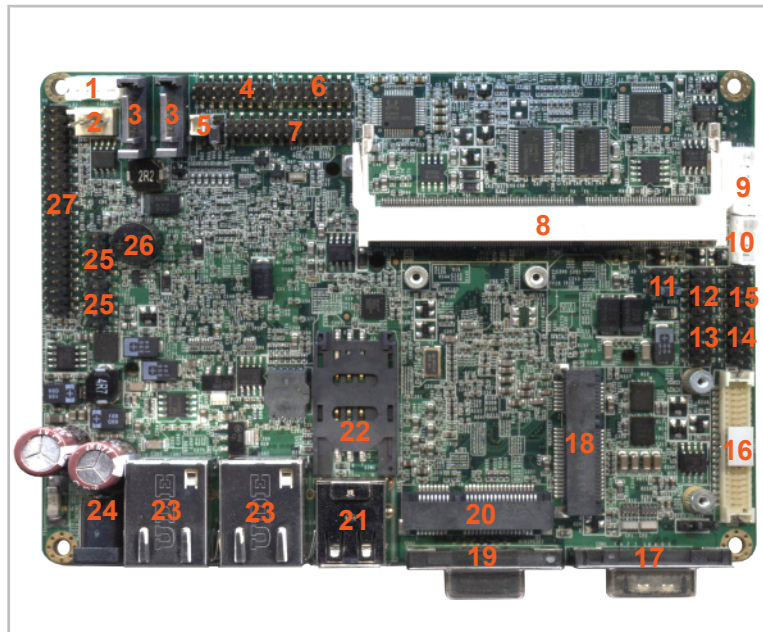


TIM-3525

Embedded Mainboard



Intel Atom dual core D525 embedded board with SO-DIMM DDR3 and 12 VDC power input

Two Mini-PCIe expansion slots with SIM cardslot.

Various storage possibilities ranging from IDE, SATA or onboard NAND Flash.

Dual LAN, 4 serial ports. (1 RS-232/422/485), 6 USB and 8 GPIO's.



System

CPU	Intel Atom D525 dual core 1.8 Ghz
Memory	1x DDR3 SO-DIMM Max. 2GB (8)
Chipset	ICH8M
Graphic interfaces	VGA connector single channel LVDS upto 18bit(16)
Audio Chipset	Realtek ALC888 2 channel audio, S/PDIF, microphone, line in (6)
BIOS	Insyde BIOS
Supported OS	Linux 2.6.x, Windows XP/Vista/7

Communication Interfaces

By connector	DC-in (24), Marvell Gigabit RJ-45 (2x)(23), USB 2.0 (2x) (21), RS-232 (17), VGA (19)
By pinheader	LPT(7), digital IO(8x)(12), USB 2.0 (4x)(25), RS-232 (3x) (13, 14, 15) RS-232/422/485(switch select)(10)

Expansion and Storage

Expansion slots	mini-PCIe halfsize(full function)(18) mini-PCIe fullsize (20) with SIMcardslot for 3G module (22)
On board	2x SATA (3), 1x IDE 44 pin interface (27)

Power

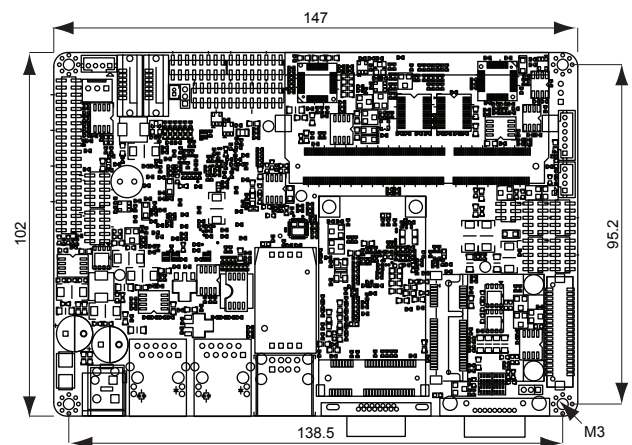
Input power	12 VDC
-------------	--------

Environmental and Mechanical

Temperature	0° to 60° C
Humidity	10-90%
Dimensions	147 x 102 mm (3.5" formfactor)
Weight	250 grams

Dimensions

units in mm



Order Information

TIM-3525	Dualcore Intel Atom D525 with DDR3 SO-DIMM
----------	--

Options

On board storage	NAND 1GB/ 2GB/ 4GB
------------------	--------------------

TechNexion

Phone: +886-2-8227-3585
E-mail: sales@technexion.com
Web: <http://www.technexion.com>

