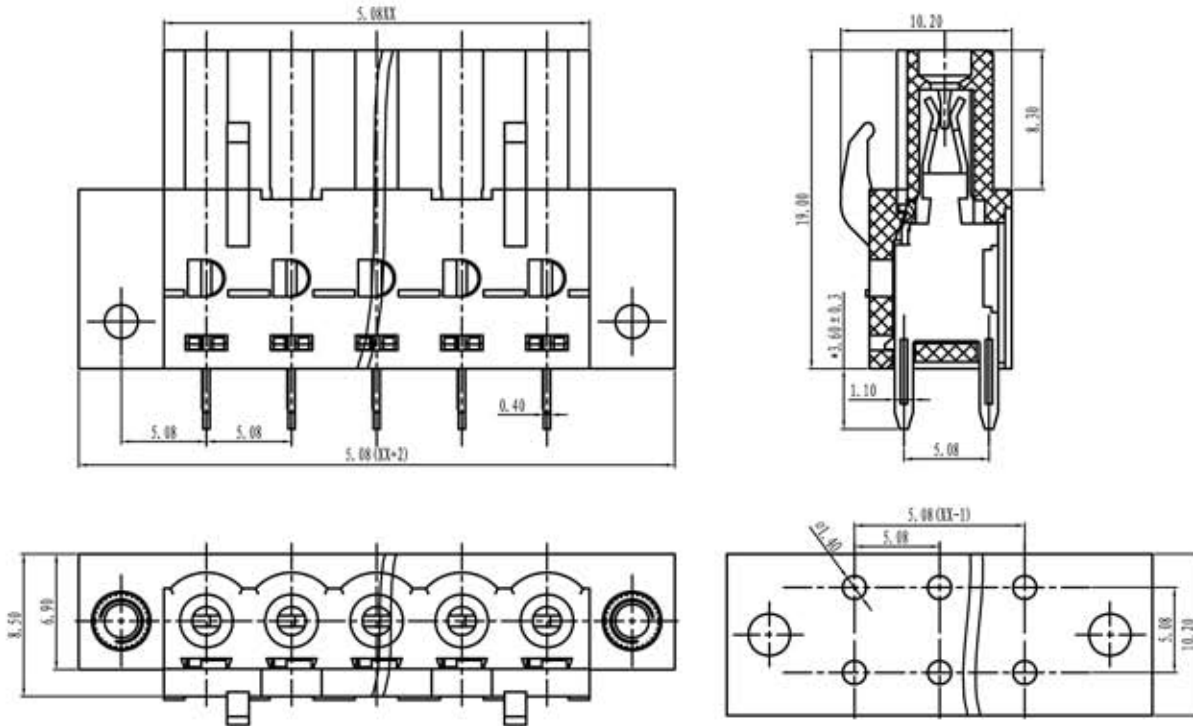


# euro-block

product specification



Electrical		
Standard	UL	IEC
Rated voltage	300V	320V
Rated current	15A	20A
Contact resistance		
Insulation resistance	500MΩ/DC500V	
Withstanding voltage	AC2000V/1 Min	
Mechanical		
Temp. Range	-40°C + 105°C	
Max sold. Time	+250°C, for 5 sec.	
Dimensions		
Pitch	5.08 mm	
Poles	2+22	
Material		
Housing	PA66, UL94V0	
Pin header	Phosphore bronze, tin plated	
Nut	M 2.5 Brass	

Version/Version	Data/Date
2013-1	31/10/2013

TOLERANCES EXCEPT AS NOTED

	linear dimension					fillet	chamfer	short angle sid				≡	—	□	//	⊥		
	over 6 to 6	over 30 to 30	over 120 to 120	over 480 to 480	over 0.9 to 0.9	all	over 6 to 6	over 10 to 10	over 50 to 50	over 120 to 120	over 10 to 10						over 30 to 30	over 120 to 120
variable range	to 6	to 30	to 120	to 480	to 0.9	all	to 6	to 10	to 50	to 120	to 10	to 30	to 120	to 0.5	to 0.025	to 0.06	to 0.12	to 0.4
tolerance	±0.1	±0.2	±0.3	±0.5	±0.9	±0.2	±0.5	±1	1'	30'	20'	10'	0.5	0.025	0.06	0.12	0.4	

General description of ordering code

Series	n. poles	pitch	version	color	custom

UNITS	mm	SIZE	A4	SCALE	FIRST ANGLE PROJECTION
<b>euro-block</b>					CMA-5.08-F