

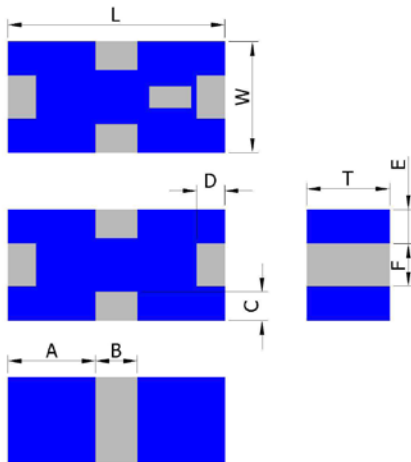
## PRODUCT FEATURES

1. Surface mount diplexer with a small size of 1.6 X 0.8 X 0.6 mm, RoHS compliant.
2. Provide low insertion loss and high attenuation.
3. Highly stable under temperature and humidity changes.

## RF CHARACTERISTICS

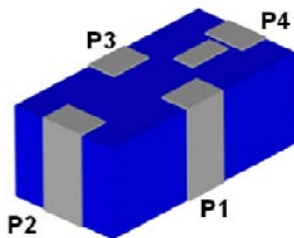
PN DP1624M0603AT	Specification	
Frequency range	1574-1577 MHz	2400-2500 MHz
VSWR	2.0 max	2.0 max
Insertion Loss	0.65 dB max.	0.8 dB max
Attenuation (dB min.)	20 dB @2.4-2.5GHz	20 dB @1.574-1.577GHz
Operation Temperature Range	-40°C to +85°C	

## PHYSICAL DIMENSIONS



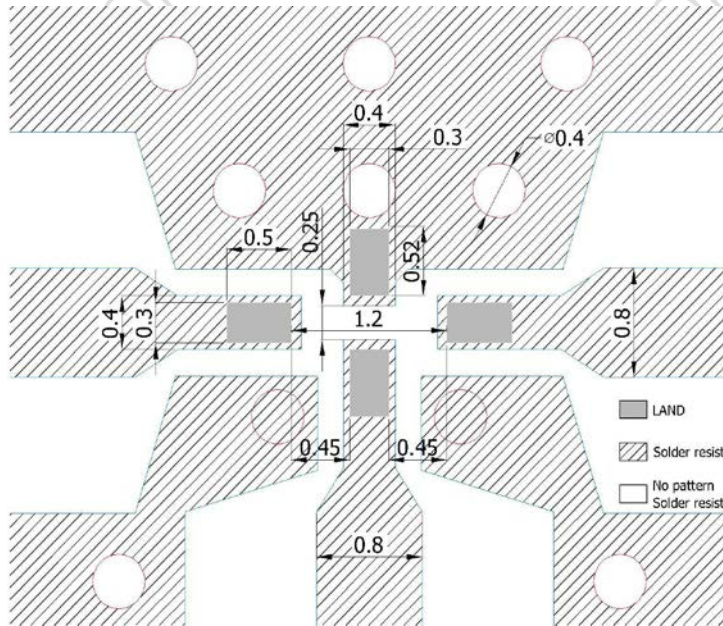
Symbol	Dimension (mm)
L	1.60 ± 0.15
W	0.80 ± 0.15
T	0.60 ± 0.10
A	0.65 ± 0.15
B	0.30 ± 0.15
C, D	0.20 ± 0.15
E	0.25 ± 0.15
F	0.30 ± 0.15

## TERMINAL CONFIGURATION



PIN	Connection	PIN	Connection
P1	GND	P3	Common port
P2	1.5 GHz port	P4	2.4 GHz port

## PCB DESIGN/LAYOUT CONSIDERATION



**Note:**

- Unit in mm
- Design trace width to be 50Ω impedance.
- Through hole diameter is 0.3mm

