

# Customer Information Sheet

DRAWING No.: S600-XX

SHEET 2 OF 2

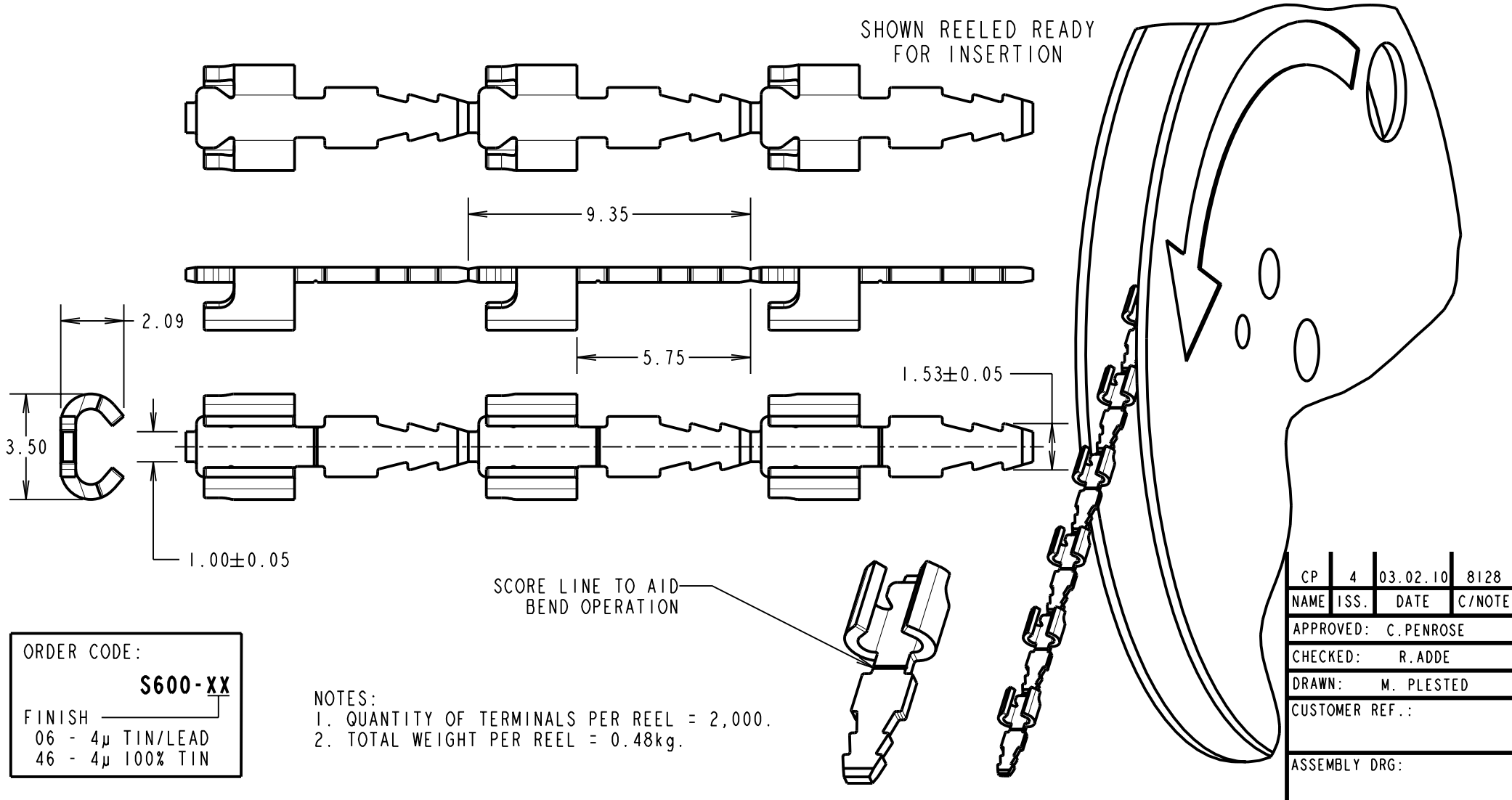
IF IN DOUBT - ASK

©

NOT TO SCALE

THIRD ANGLE PROJECTION

ALL DIMENSIONS IN mm



ORDER CODE:  
**S600-XX**

FINISH \_\_\_\_\_

06 - 4μ TIN/LEAD  
46 - 4μ 100% TIN

NOTES:  
1. QUANTITY OF TERMINALS PER REEL = 2,000.  
2. TOTAL WEIGHT PER REEL = 0.48kg.

CP	4	03.02.10	8128
NAME	ISS.	DATE	C/NOTE
APPROVED: C. PENROSE			
CHECKED: R. ADDE			
DRAWN: M. PLESTED			
CUSTOMER REF.:			
ASSEMBLY DRG:			

			<p>THIS DRAWING AND ANY INFORMATION OR DESCRIPTIVE MATTER SET OUT HEREON ARE CONFIDENTIAL AND COPYRIGHT PROPERTY OF THE HARWIN GROUP AND MUST NOT BE DISCLOSED, LOANED, COPIED OR USED FOR MANUFACTURING, TENDERING OR FOR ANY OTHER PURPOSE WITHOUT THEIR WRITTEN PERMISSION.</p>	<p>TOLERANCES</p> <p>X. = ±1mm X.X = ±0.25mm X.XX = ±0.10mm X.XXX = ±0.01mm</p> <p>ANGLES = ±5° UNLESS STATED</p>	<p>MATERIAL:</p> <p>BRASS CW508L 1/2 HARD TO BS EN 1652 (CuZn37)</p>	<p>TITLE:</p> <p>CUP/BOBBIN TERMINAL</p>
<p>HARWIN USA</p> <p>TEL: 603 893 5376 FAX: 603 893 5396 mis@harwin.com</p>	<p>HARWIN Europe (UK)</p> <p>TEL: 023 9231 4545 FAX: 023 9231 4590 mis@harwin.co.uk</p>	<p>HARWIN Asia</p> <p>TEL: +65 6 779 4909 FAX: +65 6 779 3868 mis@harwin.com.sg</p>	<p>FINISH: SEE ABOVE</p>	<p>DRAWING NUMBER:</p> <p><b>S600-XX</b></p>	<p>S/AREA: mm<sup>2</sup></p>	<p>SHT 2 OF 2</p>