

## Glass Passivated Bridge Rectifiers

**FEATURES**

- UL Recognized File # E-326243
- Glass passivated junction
- Integrally molded heatsink provide very low thermal resistance for maximum heat dissipation
- Typical IR less than 0.2uA
- High surge current capability
- Compliant to RoHS Directive 2011/65/EU and in accordance to WEEE 2002/96/EC


**GBPC**

**GBPC-W**

**GBPC-M**

**MECHANICAL DATA**
**Case :** GBPC

Molding compound, UL flammability classification rating 94V-0

**Terminal :** Matte tin plated leads, solderable per JESD22-B102

Meet JESD 201 class 1A whisker test

**Polarity :** Polarity as marked on the body

**Mounting torque :** 20 in-lbs maximum

**Weight :** 16.95 gram (approximately)

MAXIMUM RATINGS AND ELECTRICAL CHARACTERISTICS (T <sub>A</sub> =25°C unless otherwise noted)									
PARAMETER	SYMBOL	-005	-01	-02	-04	-06	-08	-10	UNIT
Maximum repetitive peak reverse voltage	V <sub>RRM</sub>	50	100	200	400	600	800	1000	V
Maximum RMS voltage	V <sub>RMS</sub>	35	70	140	280	420	560	700	V
Maximum DC blocking voltage	V <sub>DC</sub>	50	100	200	400	600	800	1000	V
Maximum average forward rectified current GBPC15 GBPC25 GBPC35	I <sub>F(AV)</sub>				15 25 35				A
Peak forward surge current, 8.3 ms single half sine-wave superimposed on rated load (JEDEC method)	I <sub>FSM</sub>				300 300 400				A
Maximum instantaneous forward voltage drop per element at specified current (Note 1)	V <sub>F</sub>	GBPC15 7.5A GBPC25 12.5A GBPC35 17.5A			1.1				V
Maximum reverse current @ Rated VR @ T <sub>J</sub> =25°C	I <sub>R</sub>				5				uA
Typical thermal resistance	R <sub>θJC</sub>				1.5				°C/W
Operating junction temperature range	T <sub>J</sub>				- 55 to + 150				°C
Storage temperature range	T <sub>STG</sub>				- 55 to + 150				°C

Note 1 : Pulse test with PW=300u sec, 1% duty cycle

Note 2 : Suffix "W" - Wire Lead Structure / "M" - Terminal Location Face to Face

ORDERING INFORMATION			
PART NO.	PACKING CODE	PACKAGE	PACKING
GBPC*5-xx (Note 1)	T0	GBPC	Tray

Note 1: "\*" defines current from 15A (GBPC15-xx) to 35A (GBPC35-xx),  
 "xx" defines voltage from 50V (GBPC\*5-005) to 1000V (GBPC\*5-10)

EXAMPLE			
PREFERRED P/N	PART NO.	PACKING CODE	DESCRIPTION
GBPC15-10 T0	GBPC15-10	T0	

**RATINGS AND CHARACTERISTICS CURVES**

(TA=25°C unless otherwise noted)

FIG. 1 FORWARD CURRENT DERATING CURVE

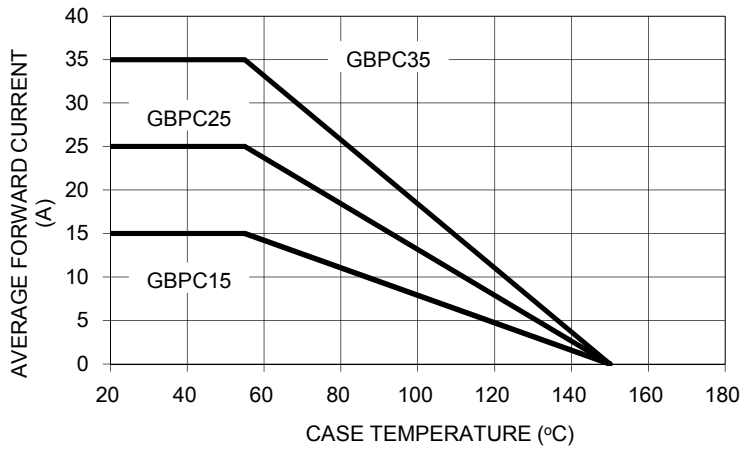


FIG. 2 TYPICAL REVERSE CHARACTERISTICS

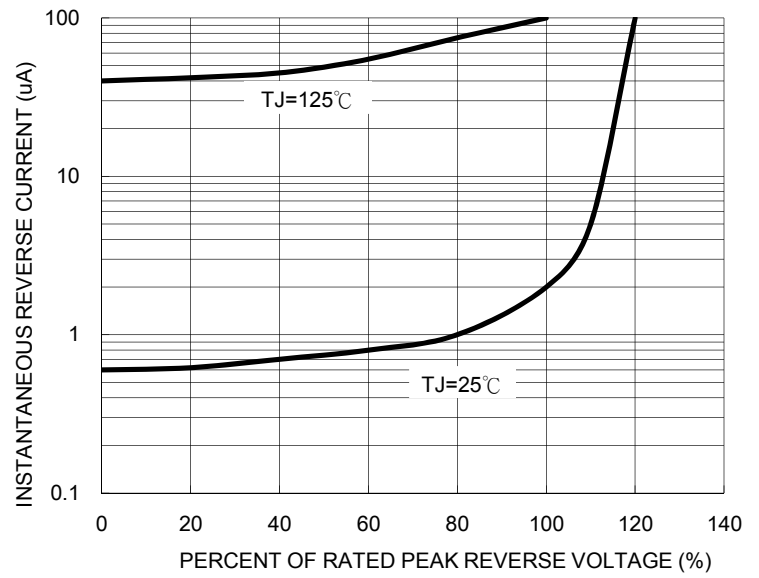


FIG. 3 MAXIMUM NON-REPETITIVE FORWARD SURGE CURRENT

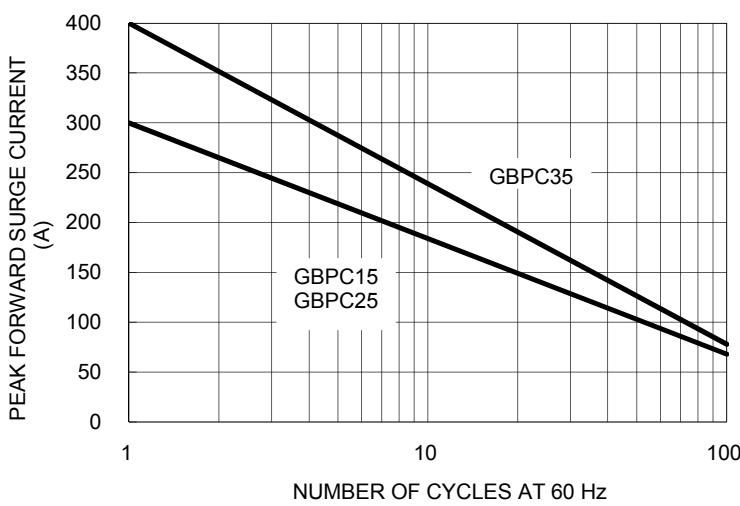


FIG. 4 TYPICAL FORWARD CHARACTERISTICS

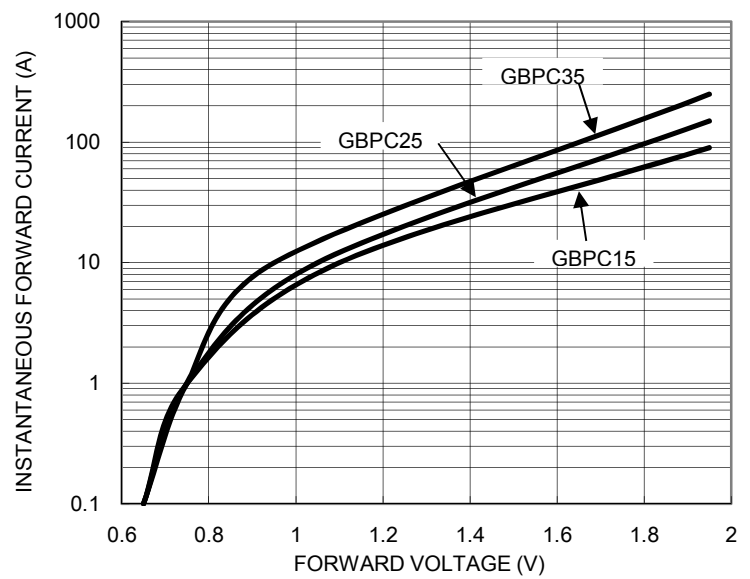
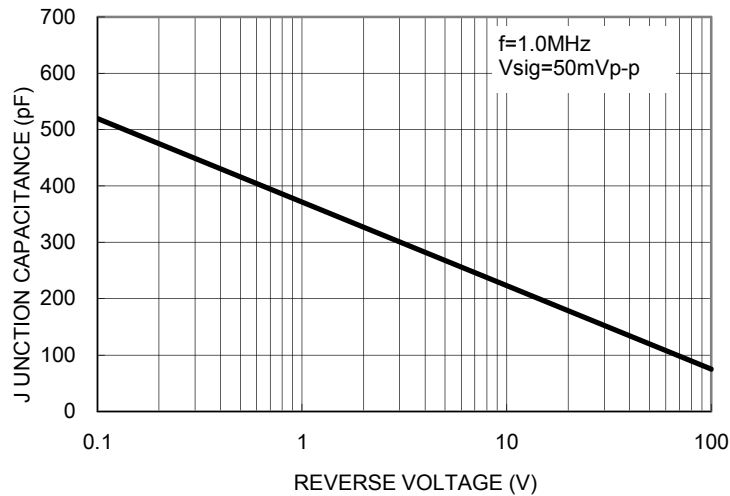
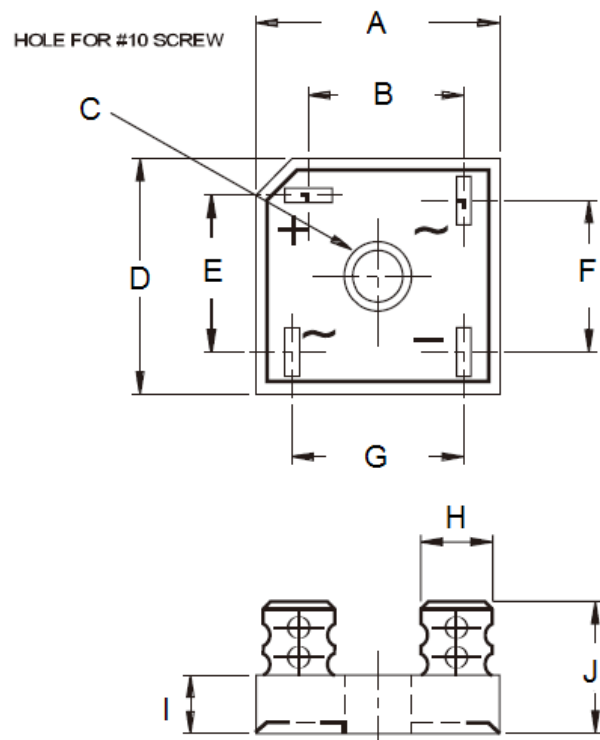


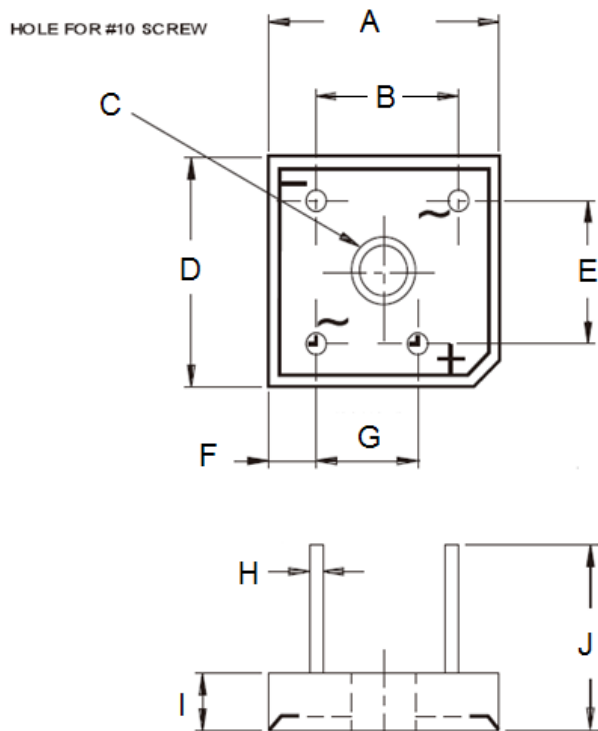
FIG. 5 TYPICAL JUNCTION CAPACITANCE



PACKAGE OUTLINE DIMENSIONS

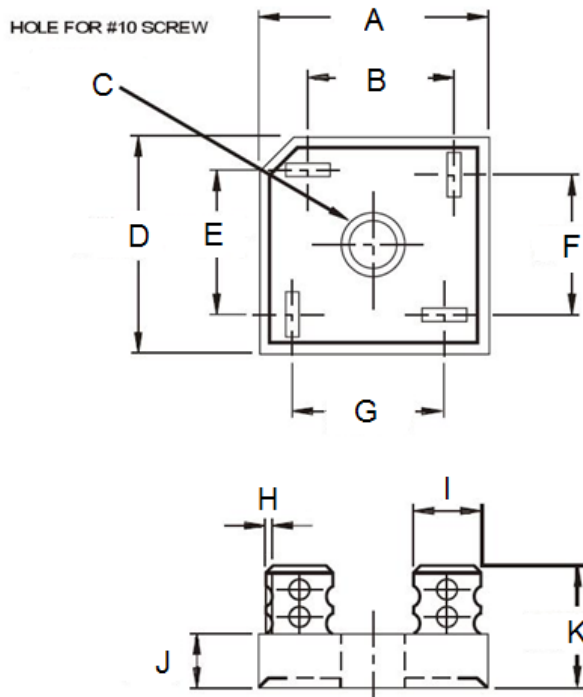


GBPC				
DIM.	Unit(mm)		Unit(inch)	
	Min	Max	Min	Max
A	28.50	29.00	1.122	1.142
B	15.50	17.60	0.610	0.693
C	5.08	5.59	0.200	0.220
D	28.50	29.00	1.122	1.142
E	15.50	17.60	0.610	0.693
F	13.30	15.30	0.524	0.602
G	17.10	19.10	0.673	0.752
H	6.35 (TYP)		0.25 (TYP)	
I	10.97	11.23	0.432	0.442
J	21.50	24.50	0.846	0.965



GBPC-W				
DIM.	Unit(mm)		Unit(inch)	
	Min	Max	Min	Max
A	28.50	29.00	1.122	1.142
B	17.10	19.10	0.673	0.752
C	5.08	5.59	0.200	0.220
D	28.50	29.00	1.122	1.142
E	17.10	19.10	0.673	0.752
F	6.20	4.40	0.244	0.173
G	10.40	12.40	0.409	0.488
H	0.97	1.07	0.038	0.042
I	10.97	11.23	0.432	0.442
J	30.50	-	1.201	-

PACKAGE OUTLINE DIMENSIONS



GBPC-M				
DIM.	Unit(mm)		Unit(inch)	
	Min	Max	Min	Max
A	28.50	29.00	1.122	1.142
B	15.50	17.60	0.610	0.693
C	5.08	5.59	0.200	0.220
D	28.50	29.00	1.122	1.142
E	15.50	17.60	0.610	0.693
F	15.50	17.60	0.610	0.693
G	15.50	17.60	0.610	0.693
H	0.76	0.86	0.030	0.034
I	6.6 (TYP)		0.26 (TYP)	
J	10.97	11.23	0.432	0.442
K	21.26	24.57	0.837	0.967

MARKING DIAGRAM



P/N = Specific Device Code  
 YWW = Date Code  
 F = Factory Code