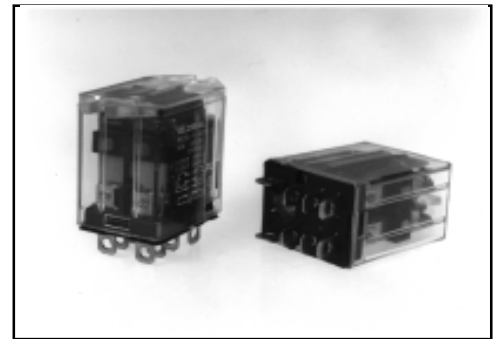


■ Features

- Long Life
- 2 Contact Arrangement
 - 1 Form C For 15A
 - 2 Form C For 10A
- Applicable For Low To High Level Loads
- PCB Terminal & Plug-In Available



ULE155513
CSALR76479M1

■ Coil Rating

Nominal Voltage	Coil Resistance (± 10%)	Nominal Current (mA)	Pick-up Voltage (Max.)	Drop-Put Voltage (Min.)	Nominal Power (W) Consumption
6VDC	40	150	4.8VDC	0.6VDC	Approx 0.90
12VDC	160	75	9.6VDC	1.2VDC	
24VDC	650	37	19.2VDC	2.4VDC	
48VDC	2,600	18.5	38.4VDC	4.8VDC	
100VDC	11,000	9.1	80.0VDC	10.0VDC	
6VAC	-	183	4.8VAC	1.8VAC	Approx. 1.2VA
12VAC	-	95	9.6VAC	3.6VAC	
24VAC	-	56	19.2VAC	7.2VAC	
48VAC	-	26	38.4VAC	14.4VAC	
110VAC	-	11	88.0VAC	33.0VAC	
220VAC	-	6.8	176.0VAC	66.0VAC	

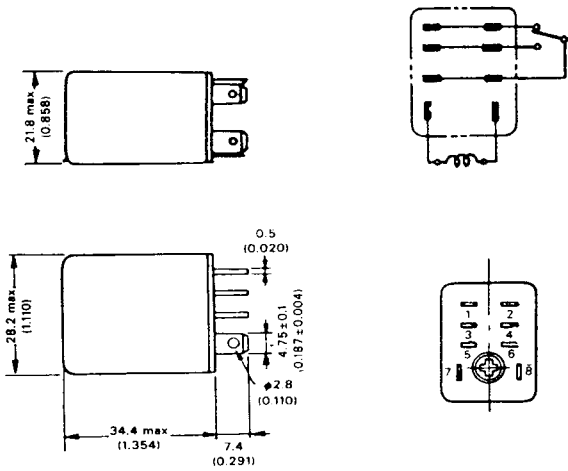
■ Specifications

Contact Arrangement	SPDT	DPDT
Contact Material	AgCdO	
Contact Rating	15 A 120VAC 15 A 28VDC	10A 120VAC 10A 28VDC 7.5A 220VAC
Max. Operating Voltage	250VAC, 120VDC	
Max. Operating Current	15A	10A
Contact Resistance	Max. 50mw (initial)	
Insulation Resistance	Min. 100w (at 500VDC)	
Dielectric Strength	1000VAC between Open Contact (1 Min.) 1500VAC between Coil & Contacts (1 Min.)	
Surge Strength	2000V	
Operate Time	Max. 25mS	
Release Time	Max. 25mS	
Ambient Temperature	- 20°C ~ + 40°C	
Vibration Resistance	1.0mm D.A. 10~55Hz	
Shock Resistance	Min. 20G	
Life	Mechanical	1x10 ⁸ (AC), 5 x 10 ⁷ (DC) Operations
	Electrical	5x10 ⁸ Operations
Weights	Approx. 35g	

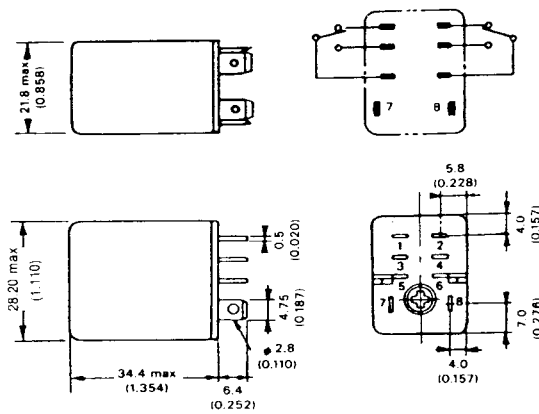
■ Dimensions

● PLUG-IN TERMINALS

1 Form C

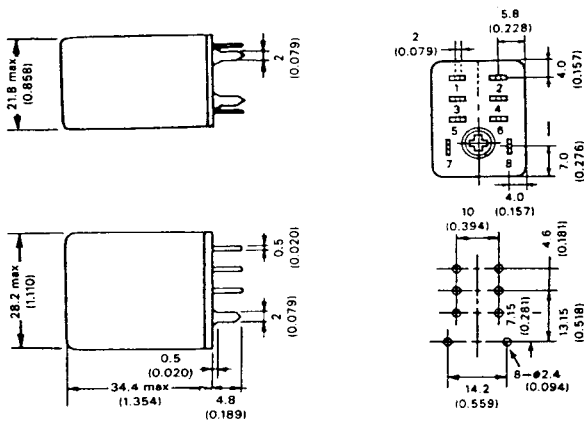


2 Form C

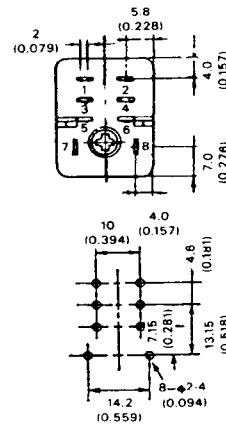


● PC BOARD TERMINALS

1 Form C



2 Form C

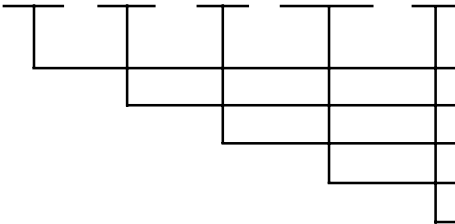


Unit: mm (inch)

• Specifications subject to change without notice.

■ How to order

MC 2C - S - DC 24 - TF



Series

Contact Arrangement: 1C (SPDT); 2C (DPDT)

Mounting: S = Socket; P = PCB

Voltage: DC/AC 6, 12, 24, 48, 110/120, 220

Cover: Blank = STD; TF = Top Flange