

PRODUCT NUMBER  
SEE TABLE

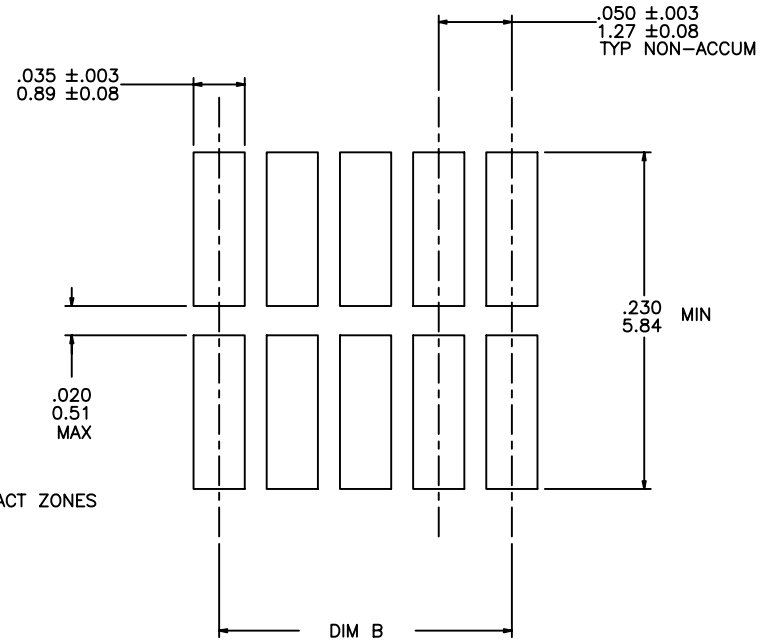
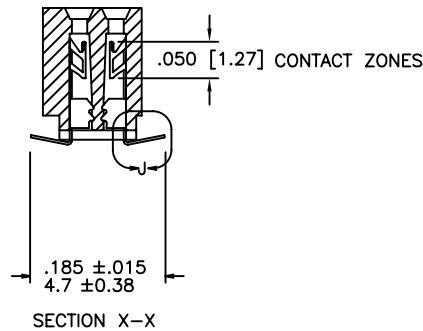
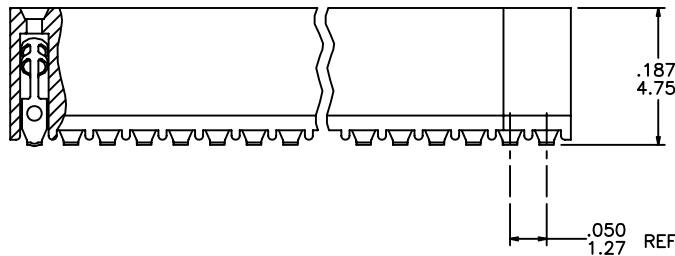
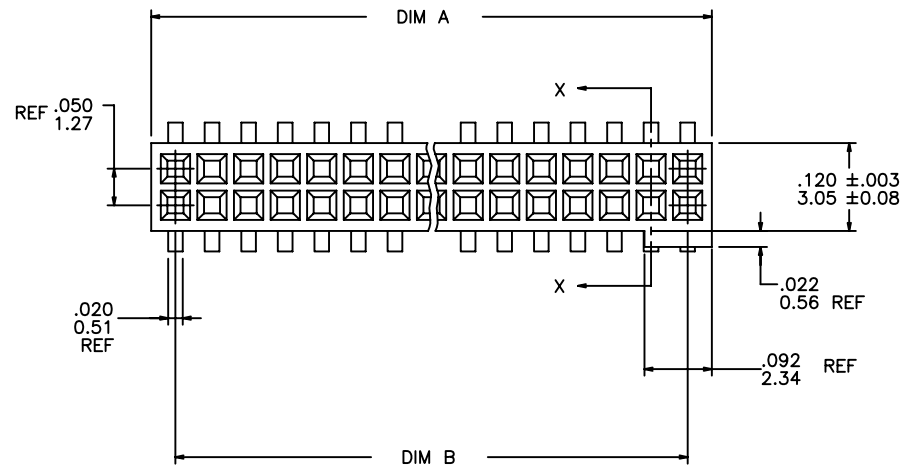
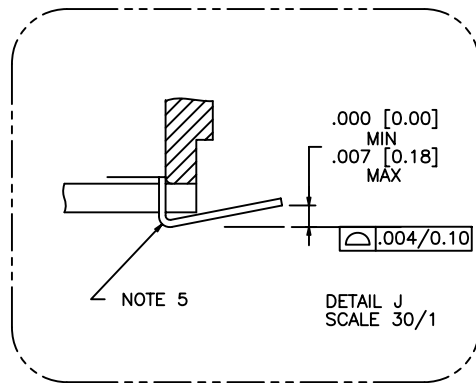


FIGURE "A"  
RECOMMENDED PCB  
MOUNTING PAD PATTERN



mat'l. code		surface		tolerance		projection		product family	
-		ISO 1302 ✓		ISO 406 ✓		ISO 1101		RIBCAGE	
ltr		ecn nldr		date		tolerances unless otherwise specified		title	
AC	ELX-N-16109	GM		10/15/13	angles	linear	.XX±.01/0.3	.050 CC VERT. C.C. ASS'Y.	
V	M05-0123	MHT		06/06/05			.XXX±.005/0.13	SUR. MOUNT-POL.	
W	M06-0225	ERE		06/12/06	0'±2'		.XXXX±.0020/0.051	scale 4:1	
X	M06-0370	MHT		09/26/06	dr	D. SHEAFFER	12/6/88	dwg no	
Y	M08-0053	MHT		02/27/08	enr	J. OSWALD	12/6/88	sheet 1 of 3	
AA	M09-0058	CMR		4/06/09	chr	J. OSWALD	12/6/88	size	
AB	ELX-N-010200	YO		02/07/12	app	J. OSWALD	12/6/88	A3	
sheet	revision	AC	AC	AC	AC	AC	AC	type Product Customer Drawing	
index	sheet	1	2	3					

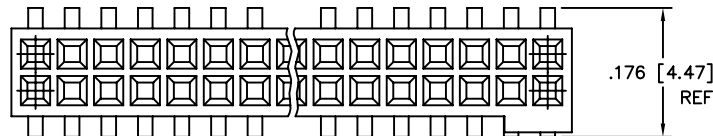


Copyright FCI

PRODUCT NO. NOTE 3, 9	SIZE	DIM A	DIM B	SPECIAL PACKAGING	TAPE WIDTH PITCH	PCS. PER REEL
87022-X05	2 X 5	.266/6.76	.200/5.08	NOTE 7	24mm 12mm	750
-X10	2 X 10	.516/13.11	.450/11.43	NOTE 7	24mm 12mm	750
-X15	2 X 15	.766/19.46	.700/17.78	NOTE 7	44mm 12mm	500
-X20	2 X 20	1.016/25.81	.950/24.13	NOTE 7	44mm 12mm	500
-X25	2 X 25	1.266/32.16	1.200/30.48	NOTE 7	44mm 12mm	500
-X30	2 X 30	1.516/38.51	1.450/36.83	NO	—	—
-X35	2 X 35	1.766/44.86	1.700/43.18	NO	—	—
-X40	2 X 40	2.016/51.21	1.950/49.53	NO	—	—
-X45	2 X 45	2.266/57.56	2.200/55.88	NO	—	—
87022-X50	2 X 50	2.516/63.91	2.450/63.23	NO	—	—
87022-X25 MIL.	2 X 25	1.266/32.16	1.200/30.48	NO	—	—

NOTE 6

- LEAD TIPS TO BE ABOVE HEEL, UP TO .007/0.18 MAX. COPLANARITY TO BE MEASURED AT LOWEST POINT (HEEL).
- SOLDERTAIL SHALL BE FINISHED IN ACCORDANCE WITH MIL-STD-1276. HOT SOLDER DIP (FINISH 51) OR FUSED (REFLOWED) TIN LEAD PLATE (FINISH 34). 100u"/2.54u MIN.



NOTES :

- HOUSING MATERIAL : LCP GLASS FILLED . FLAME RETARDANT PER UL94V-0. COLOR : NATURAL
- TERMINAL MATERIAL : BeCu
- TERMINAL PLATING :
  - 87022-6XX  
30u"/.76u MIN GOLD OR GXT OVER Ni ON CONTACT ZONES. 100u"/2.54u MIN Sn. OVER Ni IN SOLDERING ZONES. OTHERWISE GOLD FLASH OR UNPLATED. MATTE TIN FINISH AT SOLDERING ZONE.
  - 87022-1XX  
30u"/.76u MIN GOLD OVER Ni ON CONTACT ZONES. GOLD FLASH OVER Ni IN OTHER ALL ZONES.
- APPLICATION INFORMATION:
  - RECOMMENDED MOUNTING PAD PATTERN IS SHOWN IN FIGURE "A".
  - MATING PINS TO BE .0176/0.447 TO .0181/0.459 DIA.
  - MATING PIN TIPS TO BE IN TRUE POSITION TO MATING GRID WITHIN .008/0.20 DIA.
  - SUGGESTED MATING PIN LENGTH .130/3.30 ±.010/0.25.

- ADD "TR" TO END OF DASH NUMBER FOR TAPE AND REEL PACKAGING WITH CAP. TOOLED ONLY FOR NOTED CONNECTORS.
- ADD "CT" TO END OF DASH NUMBER FOR CONNECTOR WITH VACUUM CAP IN TUBE.
- ADD "LF" SUFFIX AT THE END OF PART NUMBER FOR LEAD FREE OPTION.
- THIS PRODUCT MEETS EUROPEAN UNION DIRECTIVES AND OTHER COUNTRY REGULATION AS DESCRIBED IN GS-22-008.
- THE HOUSING WILL WITHSTAND EXPOSURE TO 260°C PEAK TEMPERATURE FOR 20 SECONDS IN A CONVECTION, INFRA-RED OR VAPOR PHASE REFLOW OVEN. SEE APPLICATION NOTES/PROCEDURES IF THEY ARE AVAILABLE.
- PRODUCT SPEC PER BUS-12-087.

mat'l. code		surface		tolerance	projection	product family	
-		ISO 1302 ✓		ISO 406	INCH/MM	RIBCAGE	
				ISO 1101		title	
ltr	ecn	no	dr	date		tolerances unless otherwise specified	
AC						.050 CC VERT. C.C. ASS'Y. SUR. MOUNT-POL.	
				angles	linear	scale 4:1	
				0°±2'	.XX±.01/0.3		
					.XXX±.005/0.13		
					.XXX±.0020/0.051		
				dr	D. SHEAFFER	12/6/88	
				enr	J. OSWALD	12/6/88	
				chr	J. OSWALD	12/6/88	
				app	J. OSWALD	12/6/88	
sheet	revision						
index	sheet						



dwg no 87022 sheet 2 of 3 size A3  
type Product Customer Drawing

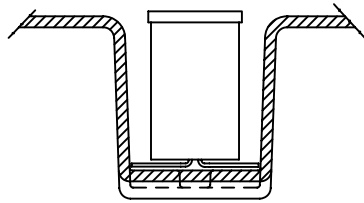
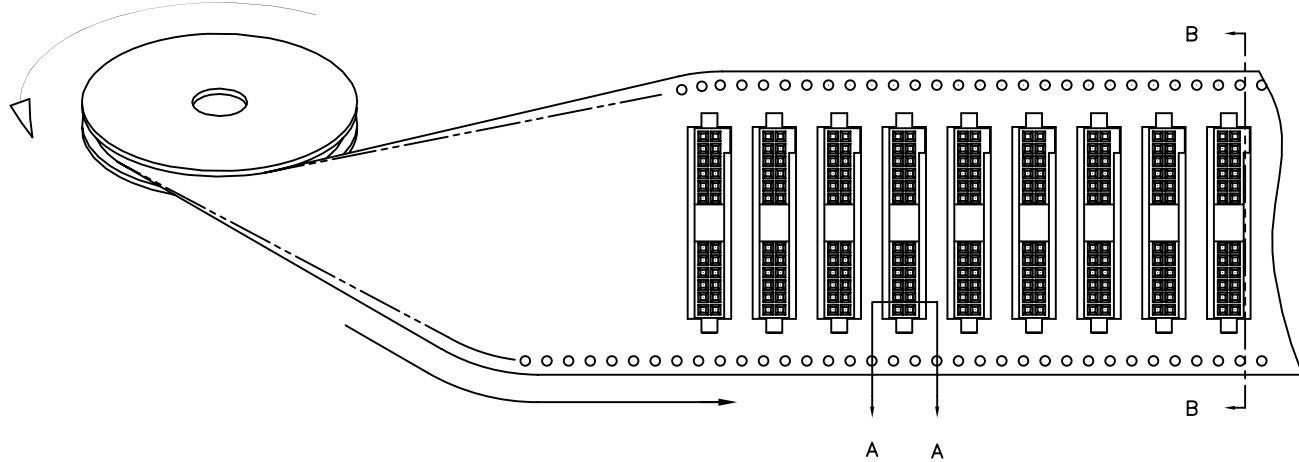
PRODUCT NUMBER  
SEE TABLE

1 2 3 4 5 6

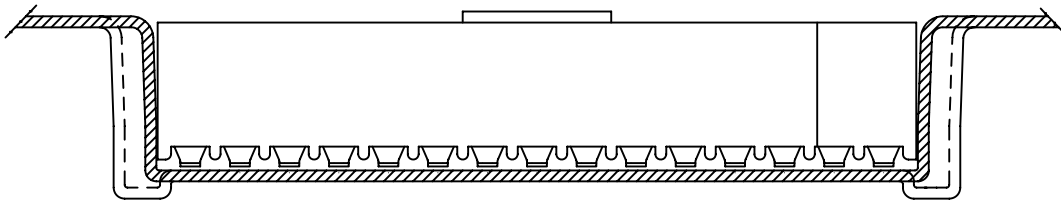
REFERENCE ONLY

TAPE WIDTH'S 32mm AND ABOVE HAS BOTH FEED TRACKS,  
BELOW 32mm HAS TOP FEED TRACK ONLY.

UNREELING  
DIRECTION



SECTION A-A



SECTION B-B

FCI  
FCIconnect.com

Copyright FCI

mat'l. code		surface		tolerance		projection		product family	
-		ISO 1302 ✓		ISO 406 ISO 1101				RIBCAGE	
tr		ecn no dr date		tolerances unless otherwise specified		INCH/MM		title	
AC				angles linear .XX±.01/0.3 .XXX±.005/0.13 .XXXX±.0020/0.051		scale 4:1		.050 CC VERT. C.C. ASS'Y. SUR. MOUNT-POL.	
		dr		D. SHEAFFER		12/6/88		dwg no	
		enr		J. OSWALD		12/6/88		sheet 3 of 3	
		chr		J. OSWALD		12/6/88		size	
		app		J. OSWALD		12/6/88		A3	
sheet index		revision sheet						type Product Customer Drawing	

