

### THREE ROW, THREE CELL RIGHT ANGLE MALE XD/P™ CONNECTORS 378-450 POSITIONS TWO CENTER MOUNTING FEATURES



#### PHYSICAL PROPERTIES

Insulation Material: Glass filled thermoplastic rated UL 94V-0

Color: Black

Contacts: Copper alloy, nickel plate overall, 30 microinches gold plating in contact zone, tin/lead or gold on posts

#### ELECTRICAL PROPERTIES

Current Rating: 2 amps/pin

Insulation Resistance: >1 x 10<sup>9</sup> Ohms

Dielectric Strength: > 1000 VDC at sea level

#### ENVIRONMENTAL PROPERTIES

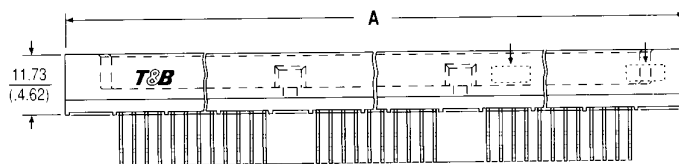
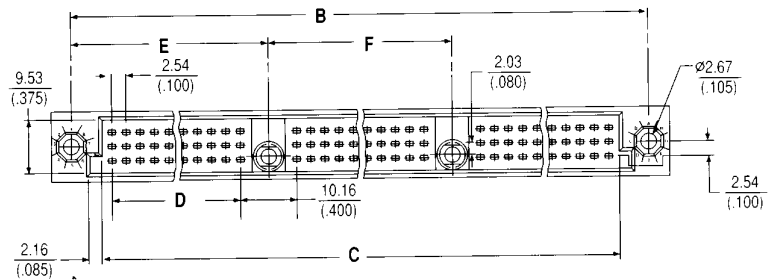
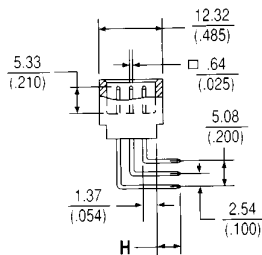
Temperature Rating: -55°C TO 125°C

#### MOUNTING HARDWARE

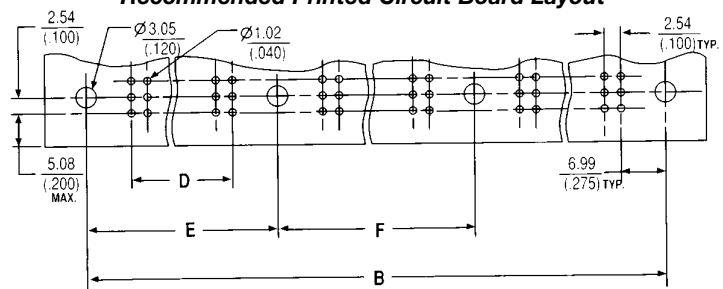
See pages 310-314

#### SELECTIVE LOADING/ SEQUENTIAL MATING

See pages 308-309



#### Recommended Printed Circuit Board Layout



X	H TAIL LENGTH	RECOMMENDED PCB THICKNESS RANGE
J	3.05 (.120)	1.2 - 2.0 (.047 - .077)
K	3.81 (.150)	2.0 - 2.8 (.078 - .109)
L	4.57 (.180)	2.8 - 3.6 (.110 - .140)

#### Ordering Information

NO. OF POS.	PART NUMBER SPECIFY X	A	B	C	D	E	F
378	303783X000-21	354.33 (13.950)	346.71 (13.650)	336.55 (13.250)	104.14 (4.100)	116.21 (4.575)	114.30 (4.500)
387	303873X000-21	361.95 (14.250)	354.33 (13.950)	344.17 (13.550)	106.68 (4.200)	118.75 (4.675)	116.84 (4.600)
405	304053X000-21	377.19 (14.850)	369.57 (14.550)	359.41 (14.150)	111.76 (4.400)	123.83 (4.875)	121.92 (4.800)
423	304233X000-21	392.43 (15.450)	384.81 (15.150)	374.65 (14.750)	116.84 (4.600)	128.91 (5.075)	127.00 (5.000)
450	304503X000-21	415.29 (16.350)	407.67 (16.050)	397.51 (15.650)	124.46 (4.900)	136.53 (5.375)	134.62 (5.300)

eg. 304503A000-21