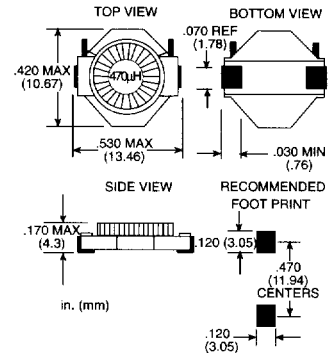


SMT3106 SMT Power Inductors



PART NUMBER	L μ H \pm 20% @ 100 kHz	DCR MAX	SATURATION CURRENT* DC AMPS	CURRENT RATING** DC AMPS
SMT3106-101M	1.0	.016	6.8	4.0
SMT3106-151M	1.5	.018	5.8	3.8
SMT3106-221M	2.2	.022	4.6	3.4
SMT3106-331M	3.3	.028	3.4	3.0
SMT3106-471M	4.7	.031	3.2	2.9
SMT3106-681M	6.8	.037	2.6	2.7
SMT3106-102M	10	.046	2.1	2.4
SMT3106-152M	15	.056	1.6	2.2
SMT3106-222M	22	.066	1.4	2.0
SMT3106-332M	33	.130	1.1	1.4
SMT3106-472M	47	.182	.95	1.2
SMT3106-682M	68	.344	.80	.87
SMT3106-103M	100	.550	.64	.69
SMT3106-153M	150	1.04	.54	.50
SMT3106-223M	220	2.09	.43	.35
SMT3106-333M	330	4.28	.36	.25
SMT3106-473M	470	5.06	.29	.23
SMT3106-683M	680	6.73	.24	.20
SMT3106-104M	1000	8.23	.20	.18



NOTES:

- Operating temperature -55°C to +125°C
- *Saturation current is the approximate value that will reduce the initial inductance by 10%
- **Rated current is based on a 40°C temperature rise at an ambient temperature of 85°C.

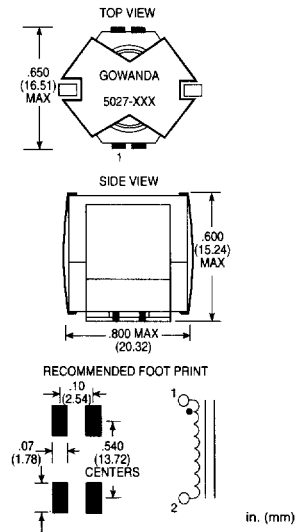
TAPE AND REEL SPECS:

PCS/Reel maximum:	700
Pitch between parts:	16 mm
Tape width:	24 mm
Reel diameter inches:	13

SMP5070 High Current Power Pods



PART NUMBER	L μ H \pm 30% @ 200 kHz	DCR REF	SATURATION CURRENT* DC AMPS	CURRENT RATING** DC AMPS
SMP5070-047	.047	.0006	125	39
SMP5070-220	.22	.0012	62.5	28
SMP5070-470	.47	.0018	41.5	23
SMP5070-820	.82	.0024	31.0	19.5
SMP5070-121	1.2	.0030	25.0	17.5
SMP5070-181	1.8	.0072	21.0	11.3
SMP5070-271	2.7	.0084	18.0	10.5
SMP5070-331	3.3	.0096	15.5	9.8
SMP5070-431	4.3	.011	14.0	9.1
SMP5070-561	5.6	.012	12.5	8.7



NOTES:

- Operating temperature -55°C to +125°C
- *Saturation current is the approximate value that will reduce the initial inductance by 10%
- **Rated current is based on a 40°C temperature rise at an ambient temperature of 85°C.

TAPE AND REEL SPECS:

Consult the factory.