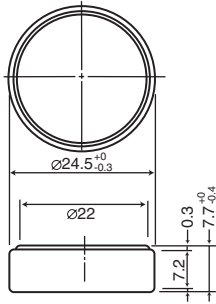


# High Operating Temperature Poly-carbonmonofluoride Lithium Coin Batteries (BR "A" Series): Individual Specifications

## BR2477A

### ■ Dimensions(mm)



Weight:8.0g

**Note:** This bare cell diagram is for size reference only. Please refer to the tab configurations at the end of this section for available tabs.

### ■ Specification

<b>Nominal voltage (V)</b>	3
<b>Nominal capacity (mAh)</b>	1,000
<b>Continuous standard load (mA)</b>	0.03
<b>Operating temperature (C)</b>	-40 ~ +125

### ■ Temperature Characteristics

