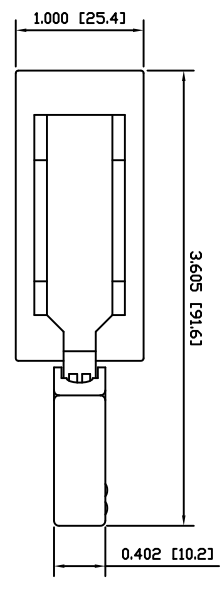


<p>8</p>	<p>7</p>	<p>6</p>	<p>5</p>	<p>4</p>
-----------------	-----------------	-----------------	-----------------	-----------------

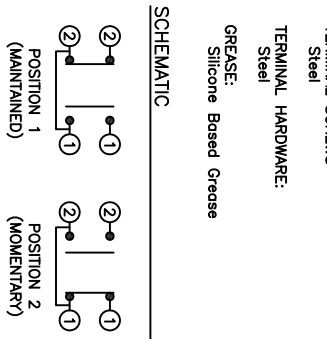
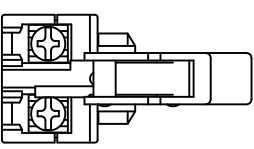
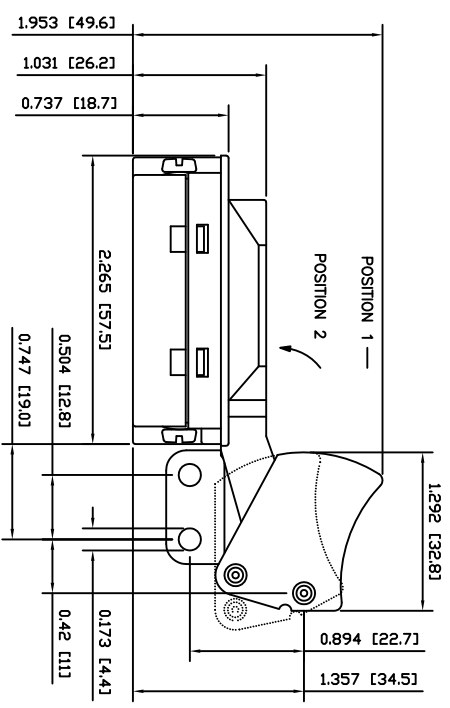


COLORS
 BODY: Black
 ACTUATOR: Black
 LOOK: None

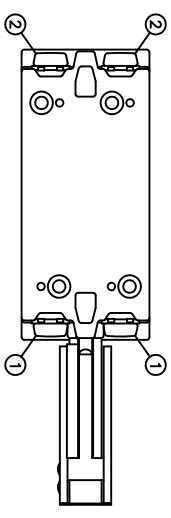
SPECIFICATIONS
 FUNCTION: ZPTT OFF-(ON)
 RATINGS:
 24A 125VAC
 12A 250VAC
 2HP 125/250VAC
 OPERATING FORCE: 2.0kgf±0.5kgf at Highest Point
 ELECTRICAL LIFE: 50,000 Cycles
 TEMPERATURE: Operating: 0°C to 55°C
 APPROVALS:
ROHS
 COMPLIANT

MATERIALS
 LOWER BODY: Phenolic (PF), UL94 V-0
 UPPER BODY: Polyamide 6/6 (PA66), UL94 V-0
 ACTUATOR: Polyamide 6/6 (PA66), UL94 V-0
 ACTUATOR RIVET: Copper
 ACTUATOR LINK: Polyamide 6/6 (PA66), UL94 V-0
 PLATE: Polyamide 6/6 (PA66), UL94 V-0
 SEAL: Nitrile Butuhine Rubber (NBR), UL94 V-0
 CONTACT HOLDER: Polyamide 6/6 (PA66), UL94 V-0
 MAIN SPRING: Steel
 SLIDERS: Steel
 MOBILE CONTACTS: Silver Plated Brass
 CONTACT SPRINGS: Steel
 CONTACTS: Silver Alloy Clad Copper
 TERMINALS: Silver Polished Brass
 TERMINAL SCREWS: Steel
 TERMINAL HARDWARE: Steel
 GREASE: Silicone Based Grease

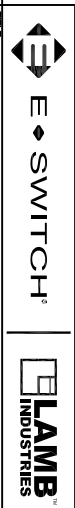
<p>B</p>	<p>6</p>	<p>5</p>	<p>4</p>	<p>3</p>
-----------------	-----------------	-----------------	-----------------	-----------------



<p>C</p>	<p>7</p>	<p>6</p>	<p>5</p>	<p>4</p>
-----------------	-----------------	-----------------	-----------------	-----------------



<p>D</p>	<p>7</p>	<p>6</p>	<p>5</p>	<p>4</p>
-----------------	-----------------	-----------------	-----------------	-----------------



HY38-6B8-021-000

THE INFORMATION CONTAINED IN THIS DOCUMENT IS PROPRIETARY TO E-SWITCH AND IS NOT TO BE COPIED OR TRANSMITTED

<p>8</p>	<p>7</p>	<p>6</p>	<p>5</p>	<p>4</p>	<p>3</p>	<p>2</p>	<p>1</p>
----------	----------	----------	----------	----------	----------	----------	----------