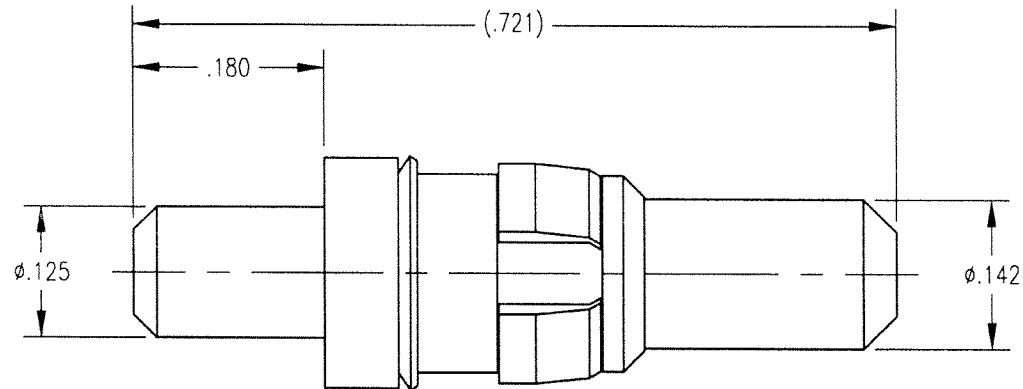


DWG NO			
220-010-0001G			
REV	DESCRIPTION	BY DATE	APPD
E	ECR 6798	10/1/00 JH	4/5/00 JH



NOTES:

1. MATERIALS:

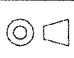
BODY: BRASS PER ASTM B16  
 CLIP RING: BERYLLIUM COPPER PER ASTM B194  
 SPRING WASHER: PHOSPHOR BRONZE PER ASTM B103

2. FINISH:

BODY: .000030 MIN. GOLD PER MIL-G-45204 OVER  
 .000050 MIN. NICKEL PER QQ-N-290  
 SPRING WASHER: .000005 MIN. GOLD PER MIL-G-45204 OVER  
 .000050 MIN. NICKEL PER QQ-N-290  
 CLIP RING: .000100 MIN NICKEL PER QQ-N-290  
 OVER COPPER FLASH

3. ELECTRICAL:

CURRENT RATING: 40 AMPS

PER ASME Y14.5M-1994 UNLESS OTHERWISE SPECIFIED: DIMENSIONS ARE IN INCHES (IN)				<b>Litton</b> <b>Winchester/Retconn</b> 400 Park Road Waterbury, Connecticut 06705	
DECIMALS xx ± .01/0.254 xxx ± .005/0.127 ANGLES ± Z' SCALE 6:1					
<b>CUSTOMER DRAWING</b>				TITLE RDM HIGH POWER P.C. PLUG 40 AMP	
DRAWN JED DATE 5/26/00	CHECKED JH DATE 5/26/00	APPROVED JMC DATE 5/30/00	APPROVED KJT DATE 5/26/00	<b>A</b>	220-010-0001G SH. 1 OF 1 REV. E