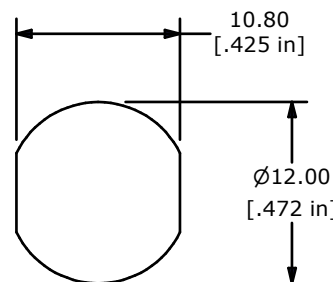
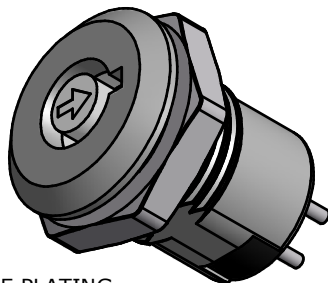


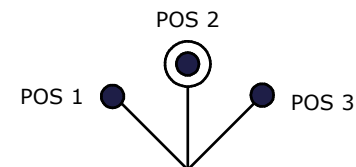
HT (HIGH TEMPERATURE)
PLASTIC
HTPA-100AG7B

NOTES:

1. ALL DIMENSIONS IN MM[INCH]
2. GENERAL TOLERANCE: x.x= ±0.4
 x.xx= ±0.25
3. TERM. NOS. FOR REFERENCE ONLY.
4. RATING: 1A @125VAC, 0.5A @250VAC
5. CONTACT RESISTANCE: 10mΩ
6. DIELECTRIC STRENGTH: 1000 VAC-1MINUTE
- ▲7. MATERIALS:
HOUSING: ZINC ALLOY W/CHROME PLATING
CYLINDER: ZINC ALLOY W/CHROME PLATING
TERMINAL AND CONTACTS: SILVER PLATED
KEYS (2) KEY CODE 1506: ZINC ALLOY, CHROME PLATING
8. ▲ DENOTES CRITICAL PARAMETER.
9. 2002/95/EC (ROHS) COMPLIANT
- ▲10. PACKAGING:



RECOMENDED PANEL CUTOUT



CIRCUIT: SPST
CONTACT CONFIGURATION
45° INDEXING

SWITCH FUNCTION		
POS 1	POS 2	POS 3
↙	↑	↗
1-2	OFF	3-4

LEGEND

- ⊙ = INDICATES KEY PULL POSSIBLE
- = DETENT POSITION

LARGE BAG CONTAINING 20 PAIRS OF KEYS

TITLE KO132D1506HT				
SCALE	DATE	DR	DWG	REV
2=1	7/23/2010	BLR	K400124	B

B	21204	CHANGE PACKAGING	8/13/13	EBP
A	19220	RELEASED FOR PRODUCTION	7/23/10	BLR
REV	PCR NO	DESCRIPTION	DATE	BY

THE INFORMATION CONTAINED IN THIS DOCUMENT IS PROPRIETARY TO E-SWITCH AND IS NOT TO BE COPIED OR TRANSFERRED