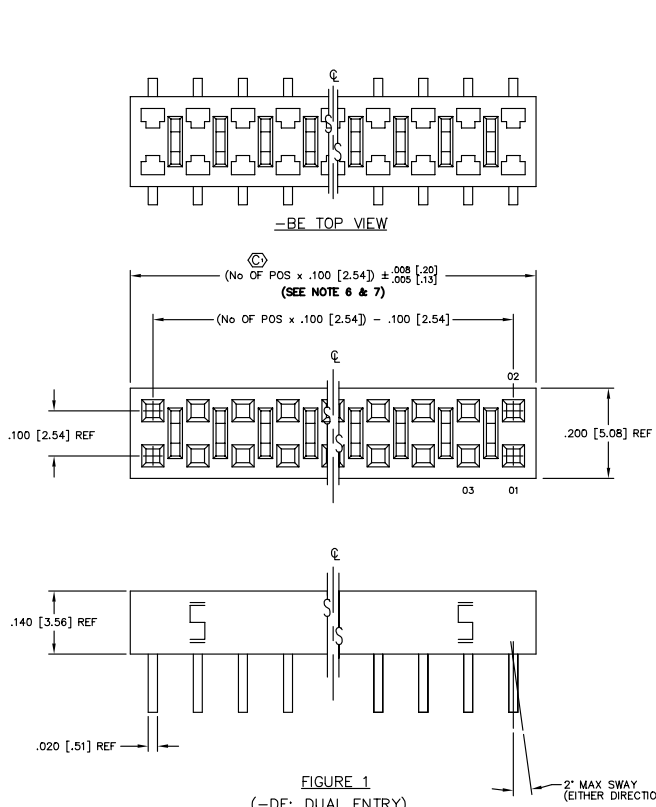


REV. BH

DIMENSIONS ARE IN INCHES UNLESS OTHERWISE NOTED TOLERANCES ARE: TITLE: LOW PROFILE SOCKET STRIP DWG NO: CLH-1XX-X-X-XX-X-XX SHEET 1 OF 2

ONE PLACE DECIMALS: ±.1 [2.5] THREE PLACE DECIMALS: ±.005 [.127] ANGLES: ±2°  
 TWO PLACE DECIMALS: ±.01 [2.5] FOUR PLACE DECIMALS: ±.0020 [.0508]



CLH-1XX-X-X-XX-X-XX

NO. OF POSITIONS -02 THRU -51

PLATING SPEC

-L: LIGHT SELECTIVE (USE C-73-XX-L-X)  
 -F: FLASH GOLD (USE C-73-XX-F-X)  
 -H: HEAVY GOLD (USE C-73-XX-H-X) (ONLY OFFERED ON DV, PE, AND BE)

OPTION

-TR: TAPE & REEL

OPTION

-P: PICK AND PLACE PAD (SEE FIGURE 6) AVAILABLE ON POSITIONS 03 THRU 50 ONLY  
 -A: ALIGNMENT PIN (N/A ON -PE, -TE, AND -DE, SEE FIG. 7 & 8 SHT 2) (-4 POS MIN)  
 -LC: LOCKING CLIP (N/A ON -TE AND -DE, SEE FIG. 7 & 8 SHT 2)  
 -K: POLYAMIDE FILM PAD (AVAILABLE ON POS 03 THRU 50 ONLY) (.005 [.13] THICKNESS WITH SILICONE ADHESIVE) (SEE FIG 9, SHT 2) (USE K-500-300) (AVAILABLE FOR ENTRY STYLE -DV AND -BE ONLY.)

ENTRY STYLE

-DV: SURFACE MOUNT (SEE TABLE 1 & FIG. 2)  
 -DE: DUAL ENTRY (SEE TABLE 1 & FIG. 1)  
 -TE: TOP ENTRY (SEE TABLE 1 & FIG. 3)  
 -PE: PASS-THROUGH ENTRY (SEE TABLE 1 & FIG. 4)  
 -BE: BOTTOM MOUNT ENTRY (SEE TABLE 1 & FIG. 5)

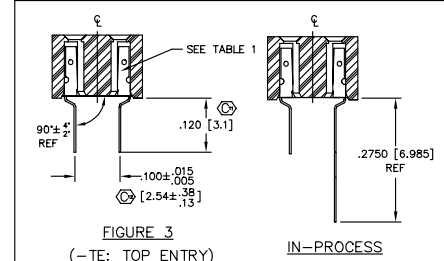
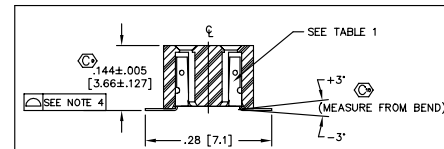
BODY SPECIFICATION

-D: DOUBLE ROW (SEE TABLE 1)

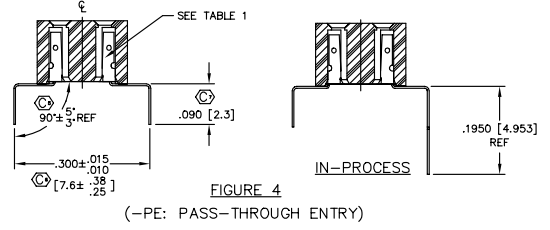
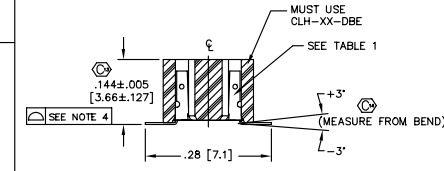
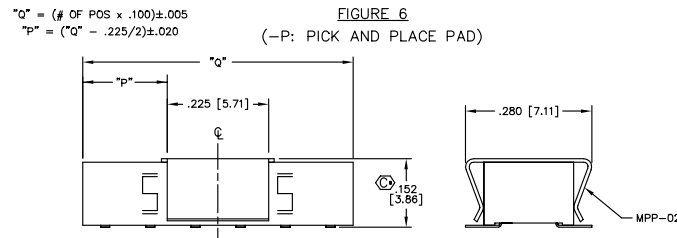
ENTRY SPEC	CONTACT	INSULATOR
-DE (SEE FIG. 1)	C-73-03-X-X	CLH-XX-D
-DV (SEE FIG. 2)	C-73-01-X-X	CLH-XX-D
-TE (SEE FIG. 3)	C-73-02-X-X	CLH-XX-D
-PE (SEE FIG. 4)	C-73-04-X-X	CLH-XX-D
-BE (SEE FIG. 5)	C-73-01-X-X	CLH-XX-DBE

NOTES:

- PUSHOUT FORCE TO BE: 1 lb. MIN.
- [ ] DIMENSIONS ARE IN MILLIMETERS.
- PARTS TO BE SYMMETRICAL ABOUT C.
- FOR POSITIONS -02 THRU -40, COPLANARITY TO BE .004; FOR POSITIONS -41 THRU -51, COPLANARITY TO BE .006.
- TUBE POSITIONS 03 THRU 51: LAYER PACKAGE POSITION 02. (-PE CAN BE TUBED 02 THRU 51)
- WILL LOSE A POSITION FOR EVERY CUT MADE ON A SOCKET STRIP. CUT FLASH TO BE .010 [.25] MAX WITH NO FLASH ALLOWED IN HOLES OR EXTENDING BELOW LEADS.
- ENDWALL AFTER CUTTING: .0255±.003
- MAX BURR: .003
- ⊕ REPRESENTS A CRITICAL DIMENSION.



ENTRY SPECIFICATION STYLES  
 DIFFERENT AS SHOWN, OTHERWISE SAME AS FIG. 1



PROPRIETARY NOTE  
 HAS DOCUMENT CONTROL APPROVAL  
 AND IS THE PROPERTY OF SAMTEC  
 INC. ALL RIGHTS RESERVED. NO  
 REPRODUCTION OR TRANSMISSION  
 IN ANY FORM OR BY ANY MEANS  
 WITHOUT PERMISSION IN WRITING  
 FROM SAMTEC INC. IS FORWARDED  
 TO THE APPLICABLE FEDERAL  
 AGENCY OR THE APPLICABLE  
 FEDERAL AGENCY OF THE ORIGINAL  
 SOURCE OF THE INFORMATION.

MATERIAL:  
 BODY: VECTRA E130  
 VECTRA E130  
 CONTACTS: 521 PHOSPHOR BRONZE  
 FULL HARD

EXSPROD ASSEMBLY 100  
 CLH-ASM

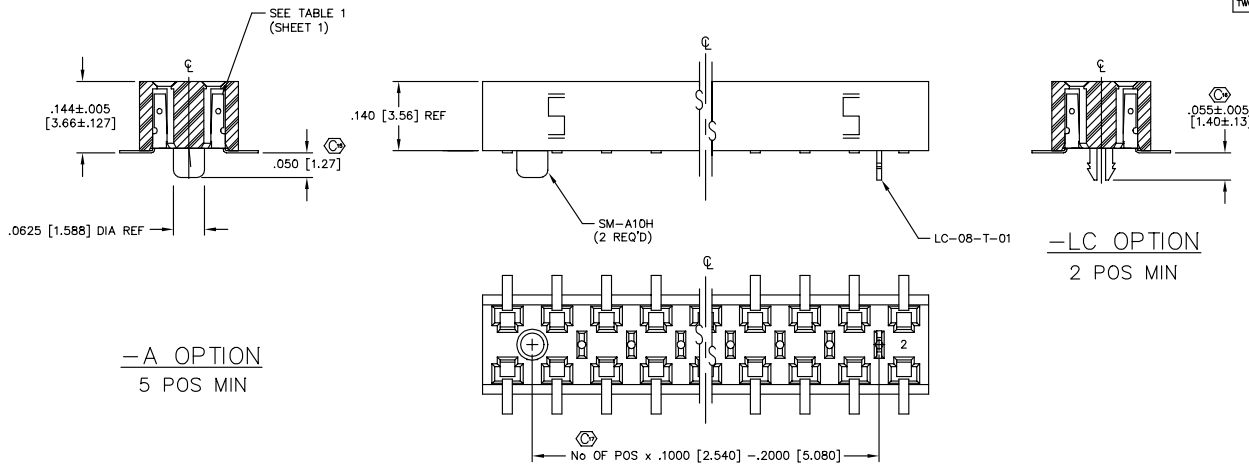
520 PARK EAST BLVD., NEW ALBANY, INDIANA 47150  
 PHONE (812) 944-6733 P.O. BOX 1147  
 COOD: 95322

MATERIAL: PURVIS 10-4-94

CLH-1XX-X-X-XX-X-XX SHEET 1 OF 2

REV. BH

DIMENSIONS ARE IN INCHES		UNLESS OTHERWISE NOTED		TOLERANCES ARE:		TITLE:		DWG NO.:
ONE PLACE DECIMALS: ± .1 [2.5]	THREE PLACE DECIMALS: ± .005 [.127]	ANGLES:	± 2°		LOW PROFILE SOCKET STRIP			CLH-1XX-X-X-XX-X-XX
TWO PLACE DECIMALS: ± .01 [.25]	FOUR PLACE DECIMALS: ± .0020 [.0508]							SHEET 2 OF 2

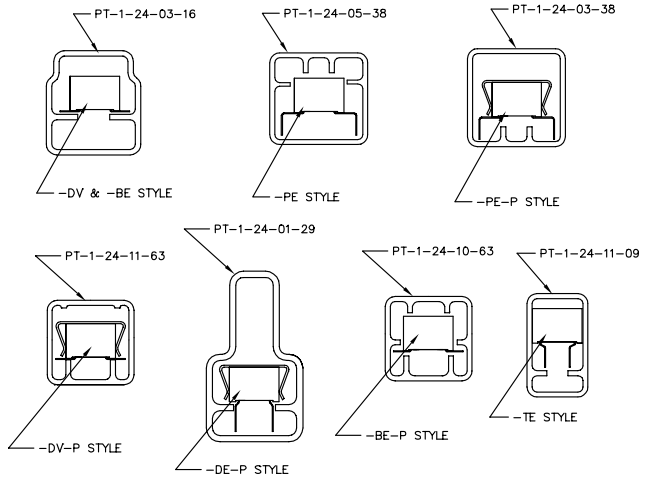
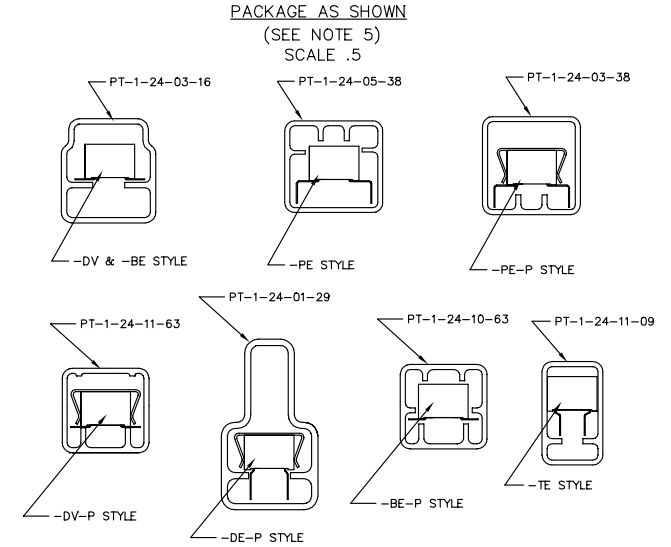


-A OPTION  
5 POS MIN

-LC OPTION  
2 POS MIN

FIGURE 7

(-DV-A & -LC: SURFACE MOUNT WITH ALIGNMENT PIN OR LOCKING CLIP OPTION)  
[DIFFERENT AS SHOWN, OTHERWISE SAME AS FIG. 2]



STYLE	PKG TUBE	PLUG
-DV-A, -BE-A	PT-1-24-10-63	TP-24
-DV-LC, -BE-LC	PT-1-24-10-63	TP-24
-DV, -BE	PT-1-24-03-16	TP-24
-BE-P	PT-1-24-10-63	TP-03
-PE	PT-1-24-05-38	TP-03
-PE-P	PT-1-24-03-38	TP-03
-DE	PT-1-24-03-09	TP-03
-TE	PT-1-24-11-09	TP-09
-DE-P, -TE-P	PT-1-24-01-29	TP-03
-DV-P, -DV-P-A, -BE-P-A, -DV-P-LC, -BE-P-LC, -DV-K, -DV-K-LC, -BE-K, DV-A-K, BE-K-LC	PT-1-24-11-63	TP-03

NOTE: "R" = USE MEASURED DIMENSION (REF)  
"S" =  $\{("R" - .2559 [6.500]) / 2\} \pm .020 [51]$

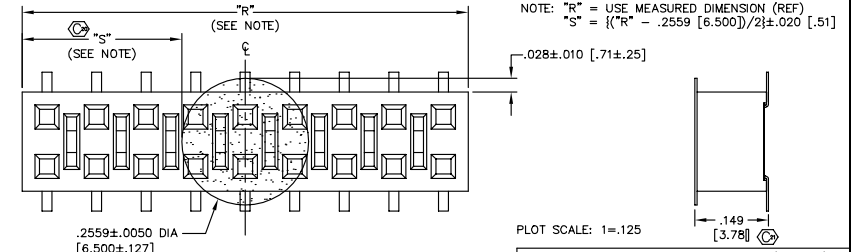


FIGURE 9

-K: POLYAMIDE FILM PAD  
AVAILABLE ON POS 03 THRU 50 ONLY

**PROPRIETARY NOTE**  
THIS DOCUMENT CONTAINS INFORMATION OF A PROPRIETARY AND CONFIDENTIAL NATURE. IT IS THE PROPERTY OF SAMTEC AND IS NOT TO BE REPRODUCED OR TRANSMITTED IN ANY FORM OR BY ANY MEANS, ELECTRONIC OR MECHANICAL, INCLUDING PHOTOCOPYING, RECORDING, OR BY ANY INFORMATION STORAGE AND RETRIEVAL SYSTEM, WITHOUT PERMISSION IN WRITING BY SAMTEC INC.

FIGURE 8  
(-PE-LC: DUAL ENTRY WITH LOCKING CLIP OPTION)  
[DIFFERENT AS SHOWN, OTHERWISE SAME AS FIG. 4]

PLOT SCALE: 1=125

EXISTPROD/ASSEMBLY/100  
CLH-ASM2

**samtec**

520 PARK EAST BLVD., NEW ALBANY, INDIANA 47150  
PHONE (812) 944-6733 F.O. BOX 1147  
CODE 55322

MADE BY: PURVIS 02-09-96

CLH-1XX-X-X-XX-X-XX  
SHEET 2 OF 2