



REV A January 2011

Oscilent Controlled Document

Ordering Code / Part Number	Product Description
813-IF85.0M-20B	85.0 MHz IF SAW Filter 20.46 MHz Bandwidth

Specification Contents

- o Mechanical Dimensions
- o Test Circuit
- o Maximum Ratings
- o Electrical Specification
- o Frequency Response
- o Smith Chart
- o VSWR

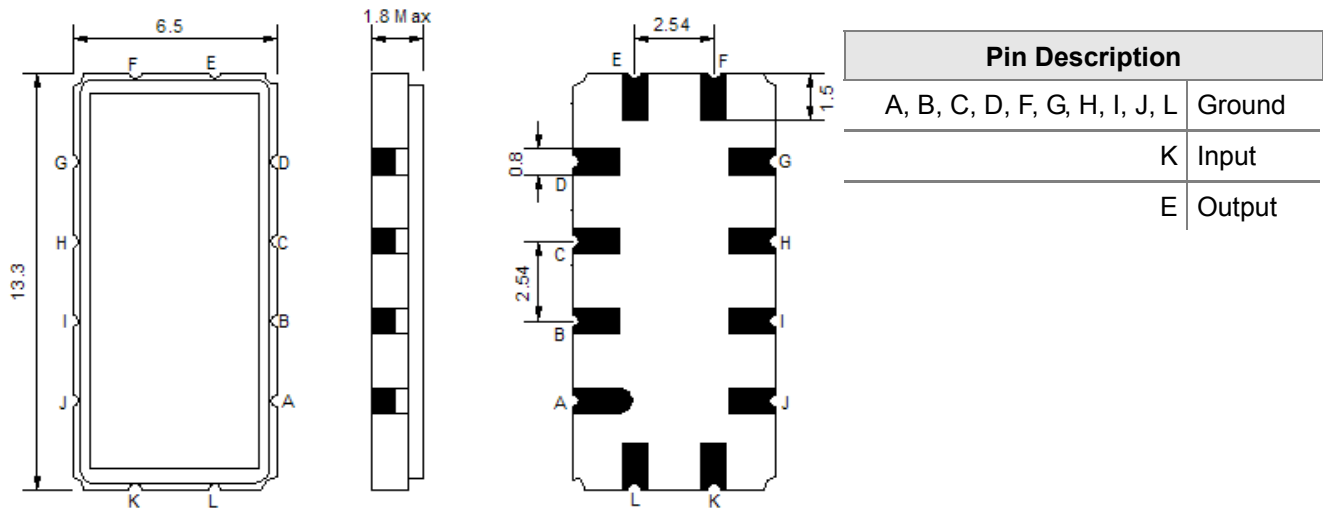
Notes

- o Electrostatic Sensitive Device (ESD) 
- o Avoid excessive ultrasonic exposure
- o Solderability compatible with JEDEC J-STD-020C Pb-free process, 260°C peak reflow temperature
- o This product complies with EU directive 2002/95/EC (RoHS compliance)

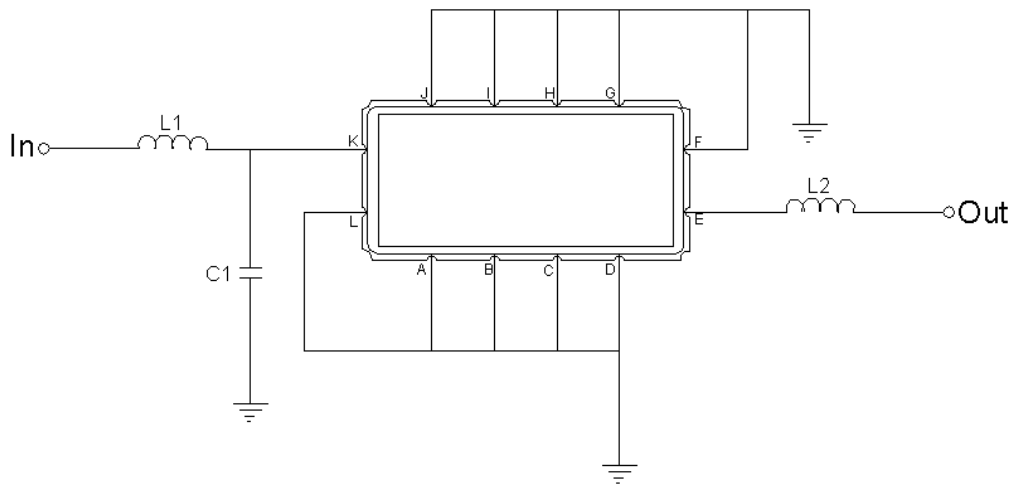




Mechanical Dimensions (mm)



Test Circuit



Test Fixture & Values

Input	L1 = 120 nH, C2 = 9 pF
Output	L2 = 120 nH
Source/Load Impedance	50 Ω



Maximum Ratings

Parameters Description	Unit	Minimum	Typical	Maximum
Operating Temperature Range	°C	-20	-	70
Storage Temperature Range	°C	-40	-	85
Maximum DC Voltage	V	-	-	10
Maximum Input Power	dBm	-	-	10
Source Impedance (single ended) ⁽¹⁾	Ω	-	50	-
Load Impedance (single ended) ⁽¹⁾	Ω	-	50	-

Notes: With Matching Network (Ref. Testing Environment Circuit as shown above).

Those impedances could be modified with different impedance values and/or structures, if necessary.

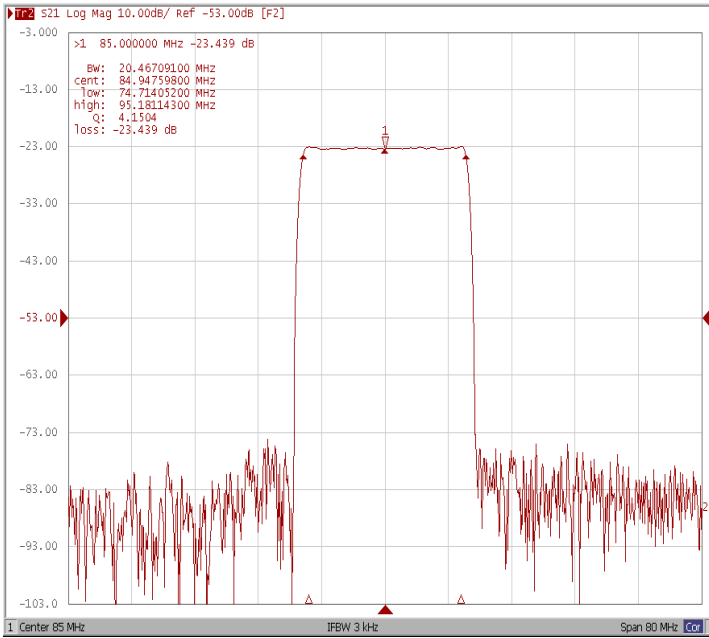
Electrical Specification

Parameters Description	Unit	Minimum	Typical	Maximum
Center Frequency (Fo)	MHz	-	85.0	-
Insertion Loss at Fo	dB	-	23.50	25.00
Group Delay Variation at Fo ± 9.65 MHz	nsec	-	30	60
Absolute Delay at Fo	usec	-	1.64	-
Passband Ripple Variation at Fo ± 9.65 MHz	dB	-	0.55	0.90
Bandwidth at -1dB	MHz	20.00	20.46	-
Bandwidth at -3dB	MHz	-	20.88	-
Bandwidth at -25dB	MHz	-	22.32	-
Bandwidth at -40dB	MHz	-	22.66	22.90
Relative Attenuation				
Lower Sidelobe	dB	48	52	-
Upper Sidelobe	dB	48	52	-
Temperature Coefficient	ppm/°C	-	-72	-

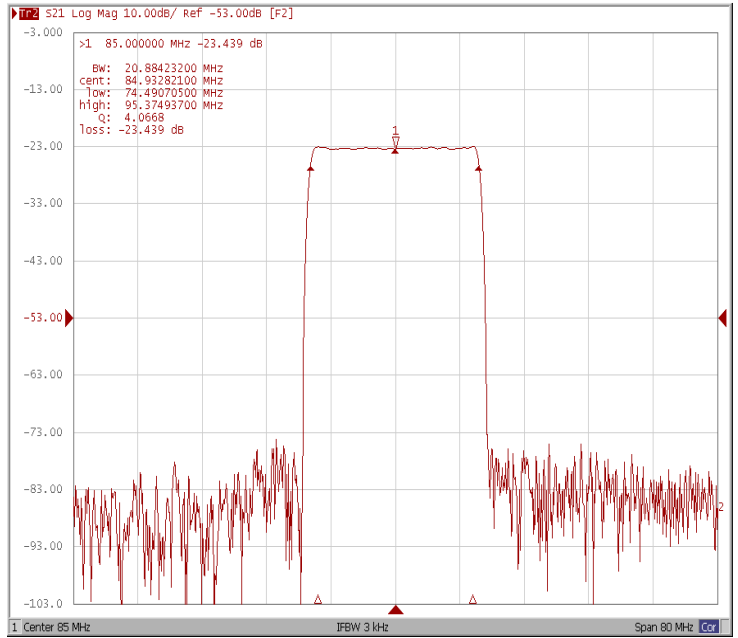


Frequency Response

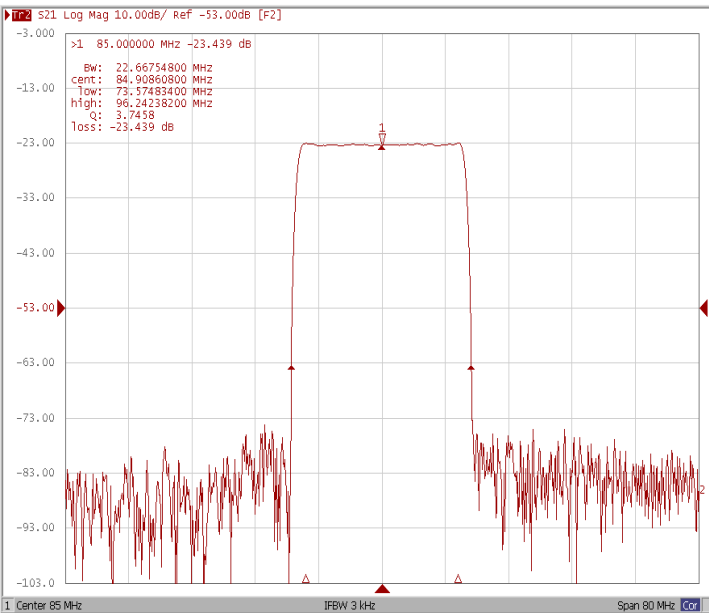
Bandwidth at -1.0 dB



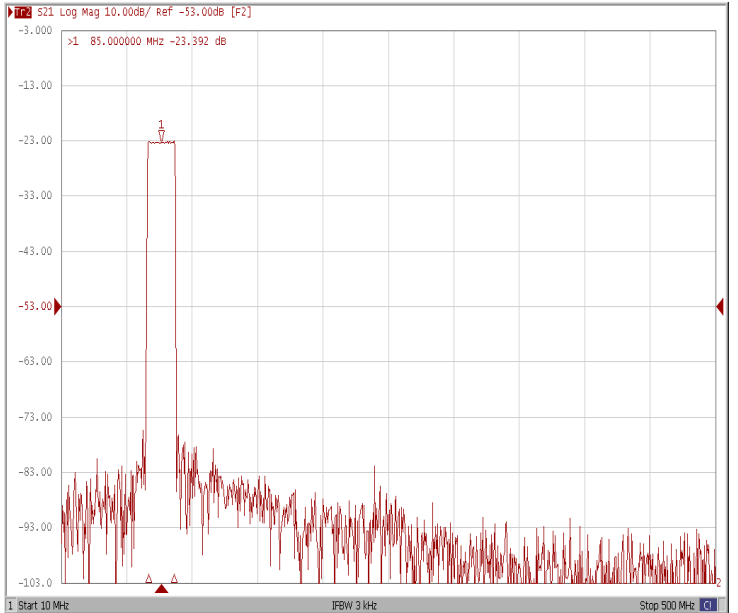
Bandwidth at -3.0 dB



Bandwidth at -40.0 dB

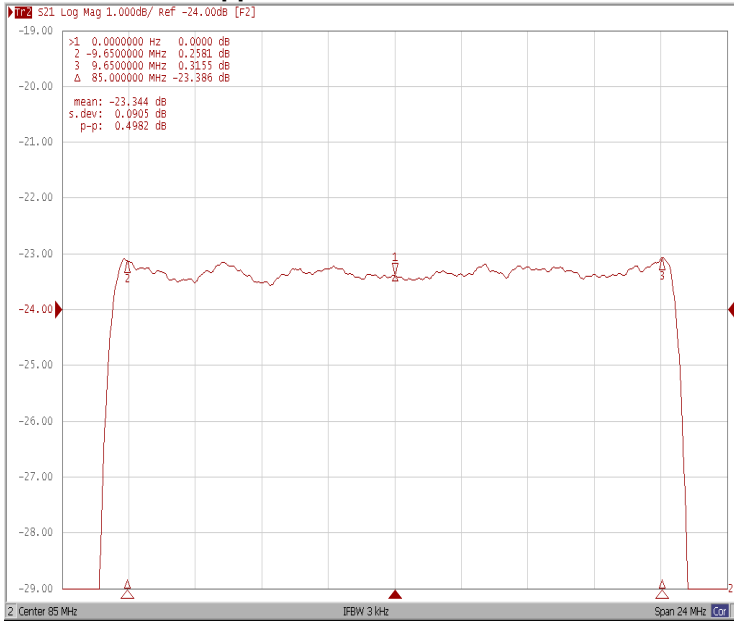


Wide-Band

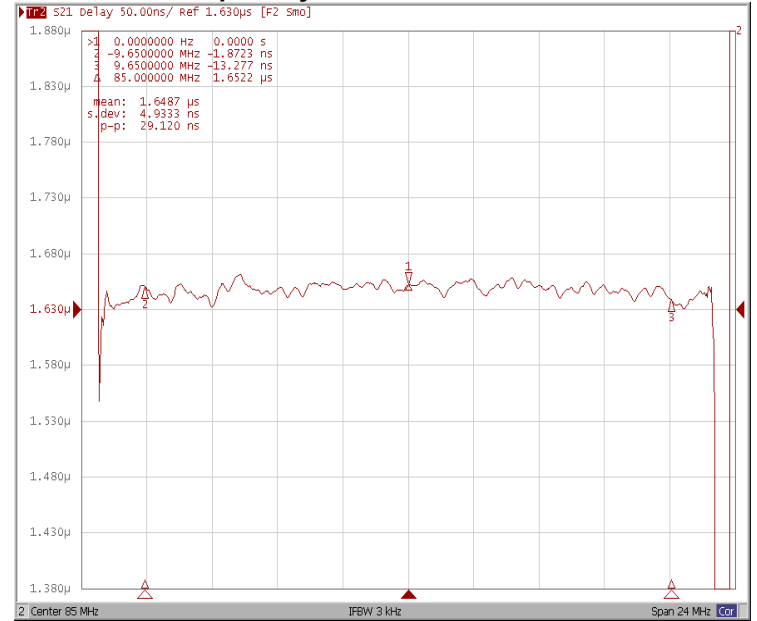




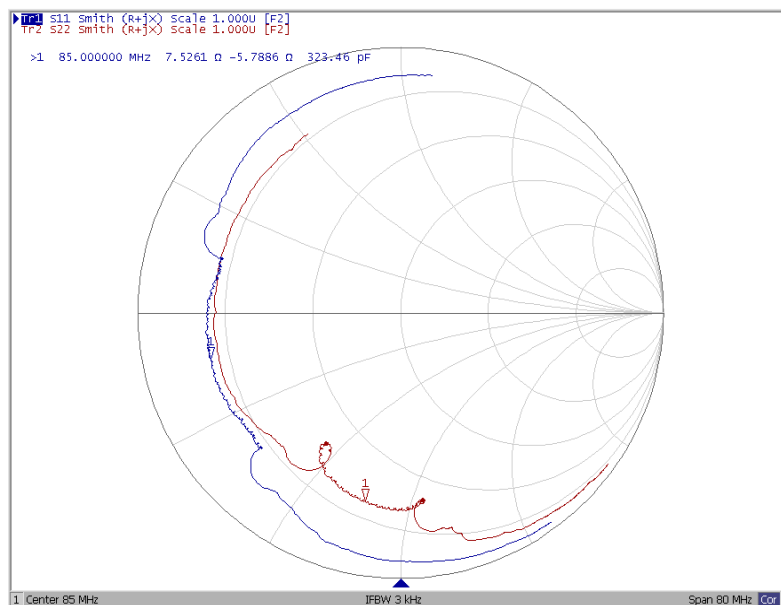
Ripple Variation Fo±9.65MHz



Group Delay Variation Fo±9.65MHz



Smith Chart





VSWR

