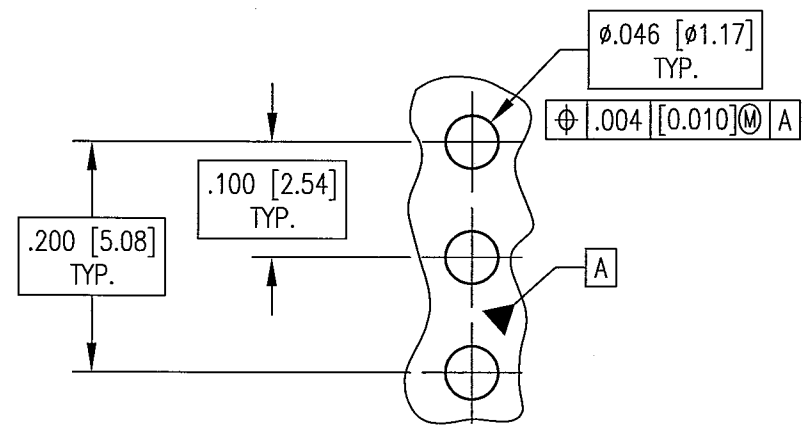
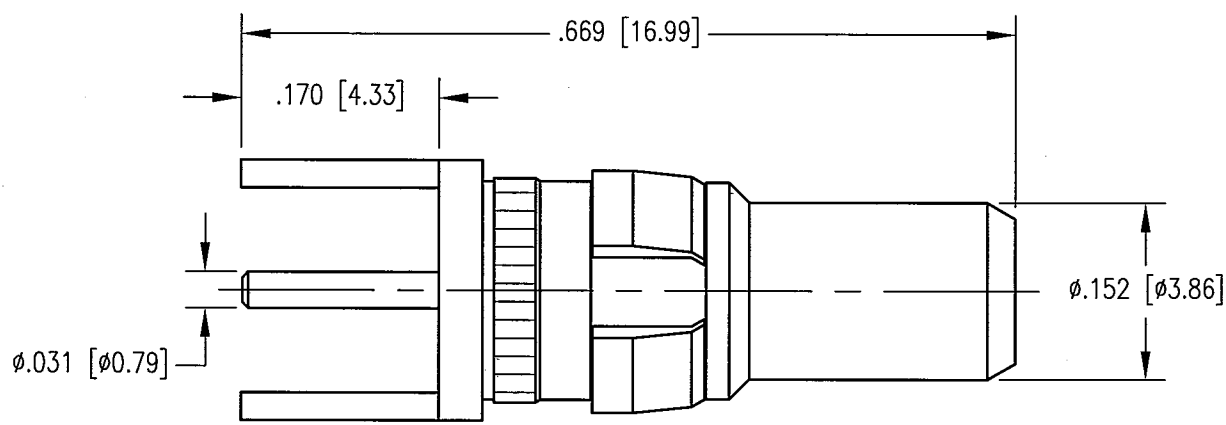
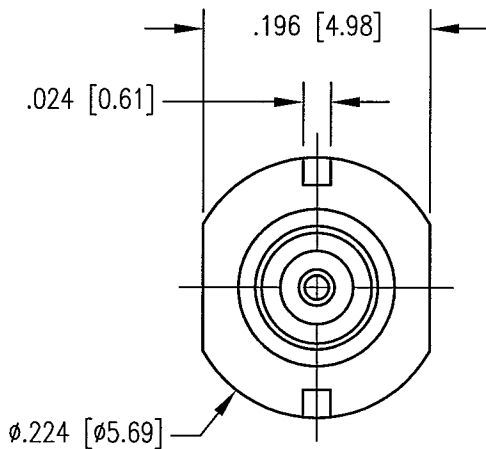


| REV | DESCRIPTION | BY DATE        | APPD        |
|-----|-------------|----------------|-------------|
| A   | ECR 7436    | JWH<br>8/19/02 | [Signature] |



RECOMMENDED MOUNTING HOLE

NOTES:

- MATERIALS:  
 BODY: BRASS PER ASTM B16  
 INSULATOR: TEFLON PER ASTM D1710  
 CONTACT: COPPER ALLOY  
 CLIP RING: BERYLLIUM COPPER PER ASTM B194
- FINISH:  
 BODY AND CONTACT: .000030 MIN. GOLD PER MIL-G-45204 OVER  
 .000050 MIN. NICKEL PER QQ-N-290  
 CLIP RING: .000100 MIN. NICKEL PER QQ-N-290 OVER  
 COPPER FLASH

|  |                 |  |                       |
|--|-----------------|--|-----------------------|
| PER ASME Y14.5M-1994<br>UNLESS OTHERWISE SPECIFIED:<br>DIMENSIONS ARE IN INCHES (MM)<br>TOLERANCES:<br>DECIMALS .XX ± .01 [0.254]<br>.XXX ± .005 [0.127]<br>ANGLES ± 2° SCALE: 6:1 |                 | <b>NORTHROP GRUMMAN</b><br>Winchester Electronics 400 Park Road<br>Watertown, CT 06795 |                       |
| <b>CUSTOMER DRAWING</b>  |                 | TITLE<br><b>RDM STRAIGHT PLUG</b>  |                       |
| DRAWN<br>JWH   | DATE<br>3/20/01 | CHECKED<br>JED   | DATE<br>3/22/01       |
| APPROVED<br>JEM  | DATE<br>3/21/01 | APPROVED<br>KJT  | DATE<br>3/21/01       |
| A  |                 | 200-010-6142G  | SHL. OF REV.<br>1 1 A |