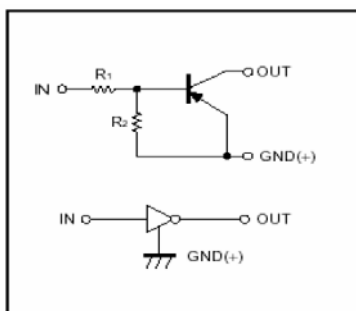



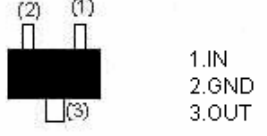
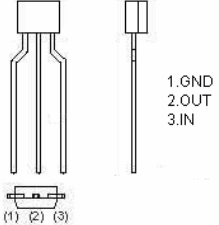
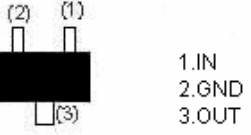
RoHS Compliant Product
A suffix of "-C" specifies halogen & lead-free

FEATURES

- Built-in bias resistors enable the configuration of an inverter circuit without connecting external input resistors (see equivalent circuit).
- The bias resistors consist of thin-film resistors with complete isolation to allow positive biasing of the input. They also have the advantage of almost completely eliminating parasitic effects.
- Only the on/off conditions need to be set for operation, making device design easy.

EQUIVALENT CIRCUIT



<p>DTA144EE (SOT-523)</p>  <p>1.IN 2.GND 3.OUT</p> <p>Abbreviated symbol : 16</p>	<p>DTA144EUA (SOT-323)</p>  <p>1.IN 2.GND 3.OUT</p> <p>Abbreviated symbol : 16</p>
<p>DTA144ESA (TO-92S)</p>  <p>1.GND 2.OUT 3.IN</p> <p>Abbreviated symbol : 16</p>	<p>DTA144ECA (SOT-23)</p>  <p>1.IN 2.GND 3.OUT</p> <p>Abbreviated symbol : 16</p>

ABSOLUTE MAXIMUM RATINGS (T_A=25°C unless otherwise noted)

Parameter	Symbol	Rating				Unit
		E	UA	CA	SA	
Supply voltage	V _{CC}	-50				V
Input voltage	V _{IN}	-40 ~ 10				V
Output current	I _O	-30				mA
	I _{C(MAX)}	-100				
Collector Dissipation	P _C	150	200	300	mW	
Junction & Storage temperature	T _J , T _{STG}	150, -55~150				°C

ELECTRICAL CHARACTERISTICS (T_A = 25°C unless otherwise noted)

Parameter	Symbol	Min.	Typ.	Max.	Unit	Test Conditions
Input voltage	V _{I(off)}	-0.5	-	-	V	V _{CC} = -5V, I _O = -100μA
	V _{I(on)}	-	-	-3		V _O = -0.3V, I _O = -2mA
Output voltage	V _{O(on)}	-	-	-0.3	V	I _O /I _I = -10mA / -0.5mA
Input current	I _I	-	-	-0.18	μA	V _I = -5V
Output current	I _{O(off)}	-	-	-0.5	μA	V _{CC} = -50V, V _I =0
DC current gain	G _I	68	-	-		V _O = -5V, I _O = -5mA
Input resistance	R ₁	32.9	47	61.1	V	
Transition frequency	f _T	-	250	-	MHz	V _O = -10V, I _C = -5mA, f=100MHz
Resistance ratio	R ₁ / R ₂	0.8	1	1.2	KΩ	

CHARACTERISTIC CURVES

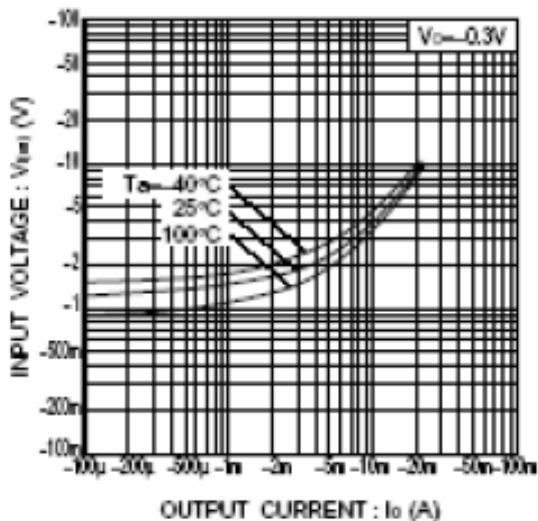


Fig.1 Input voltage vs. output current (ON characteristics)

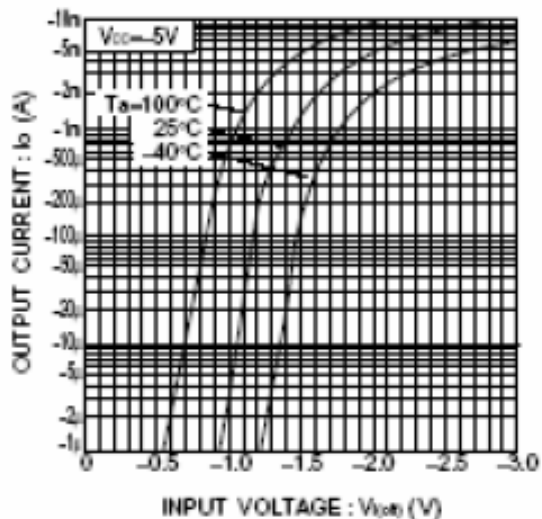


Fig.2 Output current vs. input voltage (OFF characteristics)

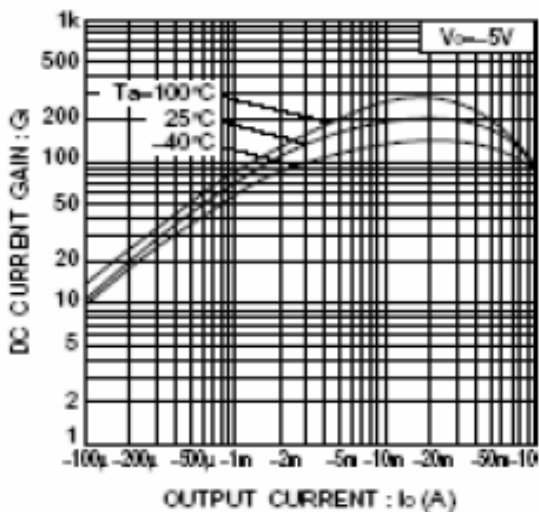


Fig.3 DC current gain vs. output current

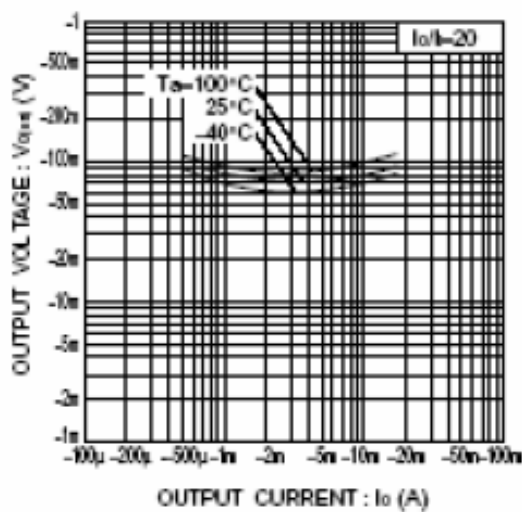


Fig.4 Output voltage vs. output current