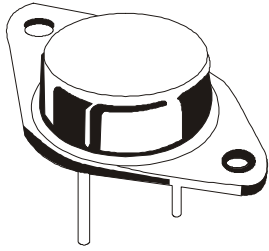


NPN SILICON PLANAR POWER TRANSISTOR

BU208A



**TO-3
Metal Can Package**

ABSOLUTE MAXIMUM RATINGS

DESCRIPTION	SYMBOL	VALUE	UNITS
Collector Emitter Voltage	$V_{CEO(sus)}$	700	V
Collector Emitter Voltage	V_{CES}	1500	V
Emitter Base Voltage	V_{EBO}	5.0	V
Collector Current Continuous	I_C	5.0	A
Peak	I_{CM}	7.5	
Base Current Continuous	I_B	4.0	A
Peak (Negative)	I_{BM}	3.5	
Power Dissipation @ $T_c=95^\circ\text{C}$	P_D	12.5	W
Derate Above 95°C		0.625	W/ $^\circ\text{C}$
Operating and Storage Junction Temperature Range	T_j, T_{stg}	- 65 to +115	$^\circ\text{C}$

THERMAL RESISTANCE

Junction to Case	$R_{th(j-c)}$	1.6	$^\circ\text{C/W}$
Maximum Lead Temperature for Soldering Purpose 1/8" from Case for 5 Seconds	T_L	275	$^\circ\text{C}$

ELECTRICAL CHARACTERISTICS ($T_c=25^\circ\text{C}$ unless specified otherwise)

DESCRIPTION	SYMBOL	TEST CONDITION	MIN	Typ	MAX	UNITS
Collector Emitter Sustaining Voltage	$V_{CEO(sus)}^*$	$I_C=100\text{mA}, L=25\text{mH}$	700			V
Collector Cut off Current	I_{CES}	$V_{CE}=\text{Rated } V_{CES}, V_{BE}=0$			1.0	mA
Emitter Base Voltage	V_{EBO}	$I_E=10\text{mA}, I_C=0$ $I_E=100\text{mA}, I_C=0$	5.0	7.0		V
DC Current Gain	h_{FE}^*	$I_C=4.5\text{A}, V_{CE}=5\text{V}$	2.25			
Collector Emitter Saturation Voltage	$V_{CE(sat)}^*$	$I_C=4.5\text{A}, I_B=2\text{A}$			1.0	V
Base Emitter Saturation Voltage	$V_{BE(sat)}^*$	$I_C=4.5\text{A}, I_B=2\text{A}$			1.5	V

Dynamic Characteristics

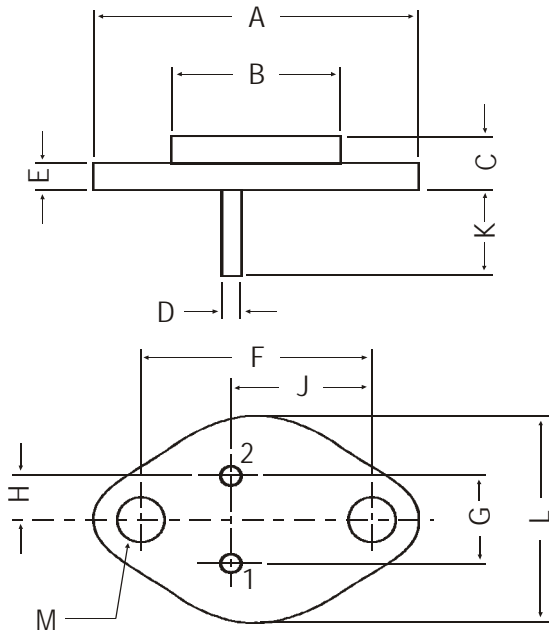
Current Gain Bandwidth Product	f_T	$I_C=0.1\text{A}, V_{CE}=5\text{V}, f=1\text{MHz}$		4.0		MHz
Output Capacitance	C_{ob}	$V_{CB}=10\text{V}, I_E=0, f=1\text{MHz}$		125		pF

Switching Characteristics

Storage Time	t_s	$I_C=4.5\text{A}, I_{B1}=1.8\text{A}, L_B=10\mu\text{H}$		8.0		μs
Fall Time	t_f	$I_C=4.5\text{A}, I_{B1}=1.8\text{A}, L_B=10\mu\text{H}$		0.4		μs

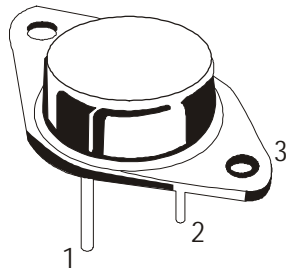
Pulse test: PW=300ms; Duty Cycle \leq 2%

TO-3 Metal Can Package



DIM	MIN.	MAX.
A	—	39.37
B	—	22.22
C	6.35	8.50
D	0.96	1.09
E	—	1.77
F	29.90	30.40
G	10.69	11.18
H	5.20	5.72
J	16.64	17.15
K	11.15	12.25
L	—	26.67
M	3.84	4.19

All dimensions in mm.



PIN CONFIGURATION

1. BASE
2. EMITTER
3. COLLECTOR

Packing Detail

PACKAGE	STANDARD PACK		INNER CARTON BOX		OUTER CARTON BOX		
	Details	Net Weight/Qty	Size	Qty	Size	Qty	Gr Wt
TO-3	100 pcs/pkt	1.3 kg/100 pcs	12.5" x 8" x 1.8"	0.1K	17" x 11.5" x 21"	2K	27.5 kgs

Disclaimer

The product information and the selection guides facilitate selection of the CDIL's Discrete Semiconductor Device(s) best suited for application in your product(s) as per your requirement. It is recommended that you completely review our Data Sheet(s) so as to confirm that the Device(s) meet functionality parameters for your application. The information furnished in the Data Sheet and on the CDIL Web Site/CD is believed to be accurate and reliable. CDIL however, does not assume responsibility for inaccuracies or incomplete information. Furthermore, CDIL does not assume liability whatsoever, arising out of the application or use of any CDIL product; neither does it convey any license under its patent rights nor rights of others. These products are not designed for use in life saving/support appliances or systems. CDIL customers selling these products (either as individual Discrete Semiconductor Devices or incorporated in their end products), in any life saving/support appliances or systems or applications do so at their own risk and CDIL will not be responsible for any damages resulting from such sale(s).

CDIL strives for continuous improvement and reserves the right to change the specifications of its products without prior notice.



CDIL is a registered Trademark of
Continental Device India Limited

C-120 Naraina Industrial Area, New Delhi 110 028, India.
Telephone + 91-11-579 6150 Fax + 91-11-579 9569, 579 5290
e-mail sales@cdil.com www.cdil.com