

Part/Keyword Search



Detailed Drawing



Printer Friendly Datasheet

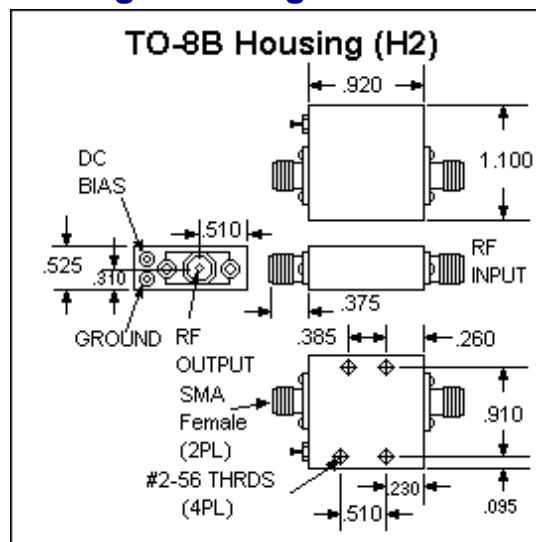
BR6776 / SBR6776*

* Part number for additional environmental screening.

Performance Data

Frequency	1.0 - 520.0 MHz
Gain	30.0 dB Typical 26.0 dB Min
Noise Figure	4.1 dB Typical 6.0 dB Max
P _{1dB}	16.2 dBm Typical 13.5 dBm Min
3 rd Order Intercept	28.0 dBm Typical
2 nd Order Intercept	0.0 dBm Typical
VSWR	0.0/2.2 Input Typ/Max 0.0/2.2 Output Typ/Max
Reverse Isolation	0.0 dB Typical 0.0 dB Min
Power Supply	15.0 Volts 65.0 mA
Operating Temperature	-55.0 - 85.0 °C

Package Drawing



Gain

dB



Frequency (MHz)

Noise Figure

dB



Frequency (MHz)

P_{1dB} Compression Point

dBm



Frequency (MHz)

Reverse Isolation

dB



- Products
- Amplifiers
- VCOs
- Limiting Amplifiers
- Switches
- Linearizers
- Limiters
- Analog Attenuators
- Digital Attenuators
- Detectors

Frequency (MHz)

Input VSWR



Frequency (MHz)

Output VSWR



Frequency (MHz)

Absolute Maximum Conditions

Maximum Operating Temperature	-55.0 - 100.0 °C	Maximum Storage Temperature	-62.0 - 125.0 °C
Maximum Case Temperature	125.0 °C	Maximum Supply Voltage	18.0 Volts
Continuous RF Input Power	13.0 dBm	Short Term RF Input Power (1 minute max)	50.0 mW
Maximum Peak Power (3 µsec max)	0.5 W		

Amplifonix | 2707 Black Lake Place | Philadelphia, PA 19154
Tel: 215.464.4000 | FAX: 215.464.4001 | Email: info@amplifonix.com

i2 Technologies US, Inc.

HTML Pages converted to PDF Document

This document contain component information from the manufacturer's website which are not available in a revision controlled document from the manufacturer. To facilitate the addition of these parts into the Electronics Database, we are converting the HTML pages related to that part, from the manufacturer's website into Adobe PDF format. The contents of this document is based on the information provided on the manufacturer's website, therefore the information may have been changed by the manufacturer since this was created.

