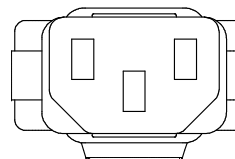


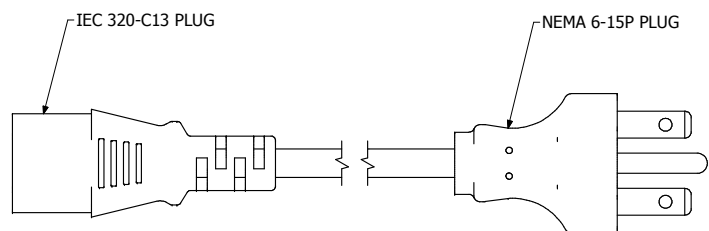
TOP VIEW



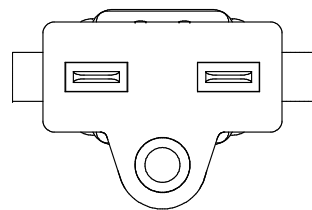
IEC PLUG



ISOMETRIC VIEW



SIDE VIEW



NA PLUG

| |
|-------------------------------------|
| 1581C6NA250 |
| Rated - 10 Amps / 250 VAC |
| Standard - 18/3 SJT Cord |
| Molded Plug Ends With Strain Relief |
| 6' Foot Cord Length |



**HAMMOND
MANUFACTURING™**

1581C6NA250

www.hammondmfg.com