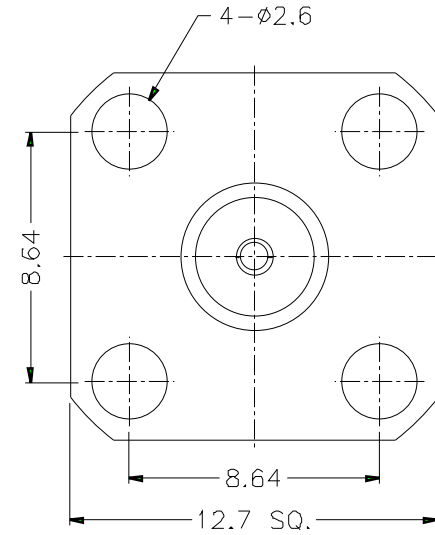
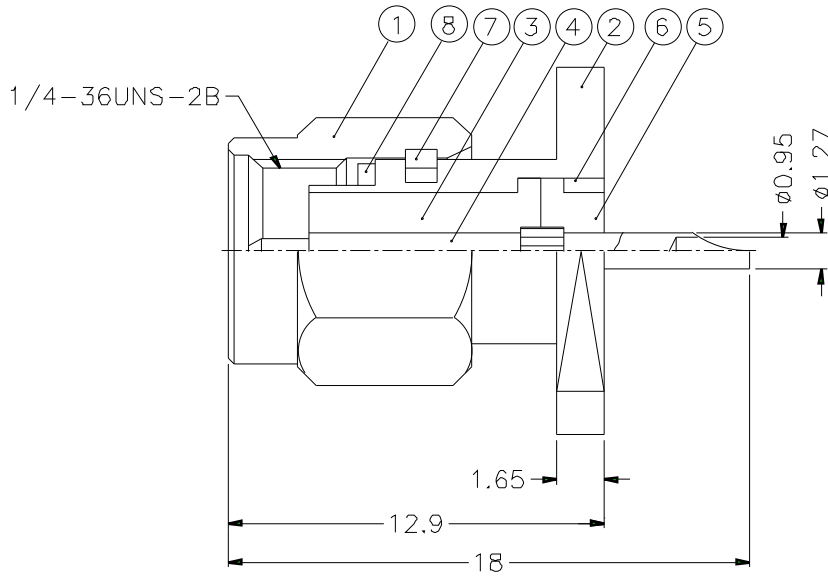


1			2			3			4			5			6			7			8		
REVISIONS																							
ISS	ZONE	DESCRIPTION\PER REQUEST\DATE																					



NOTES: FINISH (PLATING THICKNESS IN MICRO-INCHES)

1. BRASS PER QQ-B-626
2. GOLD PL. 3 MIN. THICK OVER NICKEL PL. 100 MIN. THICK OVER COPPER STRIKE
3. GOLD PL. 50 MIN. THICK OVER NICKEL PL. 100 MIN. THICK OVER COPPER STRIKE
4. BERYLLIUM COPPER PER QQ-C-530
5. TEFLON MIL-P-1946B

8	GASKET	SILICONE	RED	1	GS-6/43X06
7	RETAINER RING	NOTE 4	NATURAL	1	SMA5000-4-B
6	RING	NOTE 1	NOTE 2	1	SMA7530-5-B
5	INSULATOR	NOTE 5	NATURAL	1	SMA7530-4T-50
4	CONTACT PIN	NOTE 1	NOTE 3	1	SMA5530-4
3	INSULATOR	NOTE 5	NATURAL	1	SMA5530-3T-50-B
2	BODY	NOTE 1	NOTE 2	1	SMA5530-2-A
1	SHELL	NOTE 1	NOTE 2	1	SMA5000-1-B
NO.	DESCRIPTION	MATERIAL	FINISH	Q'TY	DRAWING NO.

DIMENSIONS ARE IN MILLIMETERS  
 UNLESS OTHERWISE SPECIFIED TOLERANCES  
 0.5-6 = ±0.2  
 6-30 = ±0.4  
 30-120 = ±0.6  
 120-315 = ±1  
 315-1000 = ±1.6  
 1000-2000 = ±2.4

PART NO.	SMA1551A1-3GT50G-50
APPROVED	DATE 10-11-01'
CHECKED	DATE 10-11-01'
DRAWN	DATE 10-11-01'

<b>Amphenol</b>	
TITLE SMA PANEL RECEPT. PLUG	
DRAWING NO. KJ-SMA1551A1-3GT50G-50	
ITEM NO.	

NO.	DESCRIPTION	MATERIAL	FINISH	Q'TY	DRAWING NO.	SCALE	4/1	ISSUE	A	FILE NO
-----	-------------	----------	--------	------	-------------	-------	-----	-------	---	---------

1 2 3 4 5 6 7 8