

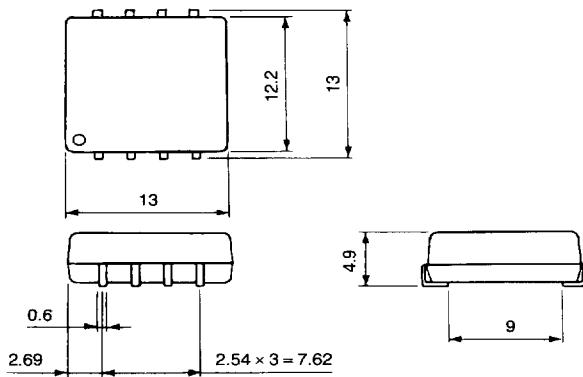
● **RMT**

FEATURES

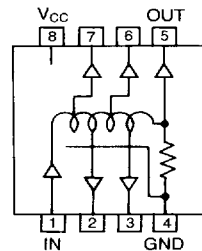
- Built-in TTL logic element (equivalent to a 74S04).
- Transfer-molded for high reliability.
- Surface-mounting.
- Low-profile design (under 4.9mm high).



DIMENSIONS (Unit: mm)



CONNECTIONS



ELECTRICAL CHARACTERISTICS $V_{CC} = 5 \pm 0.01V$, $T_a = +25^\circ C \pm 2^\circ C$, All values without load.

Part Number	Total Delay (ns.) T_{PLH}	Delay per Tap (ns.)	Rise Time (ns.) Max.
RMT020L	$20 \pm 3ns.$	4 ± 2	4
RMT025L	$25 \pm 3ns.$	5 ± 2.5	4
RMT050L	$50 \pm 4ns.$	10 ± 3	4
RMT075L	$75 \pm 4ns.$	15 ± 3	4
RMT100L	$100 \pm 5\%$	20 ± 3	4
RMT150L	$150 \pm 5\%$	30 ± 3	4
RMT200L	$200 \pm 5\%$	40 ± 4	4

GENERAL DATA

- Operating Temperature : 0 to +70°C
- Storage Temperature : -55 to +125°C
- Temperature Coefficient : 550ppm/°C (Typ.)
- Minimum passing pulse width : $0.35 \times T_{PLH}$ (20 ~ 50ns.)
 $0.30 \times T_{PLH}$ (75ns. over)
- Packing Style : Cartridge
- Minimum packing quantity : 30 pcs/Cartridge