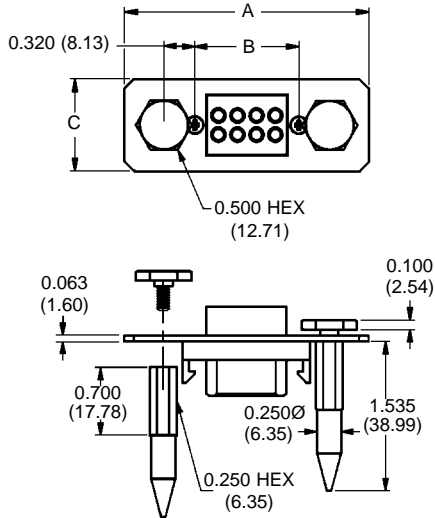
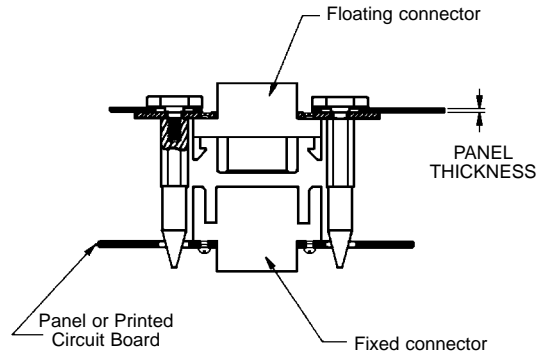


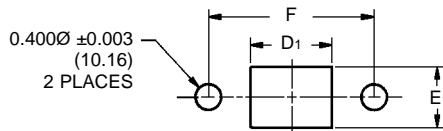
TECHNICAL CHARACTERISTICS
POWER CONNECTION SYSTEMS BLIND MATING SYSTEM



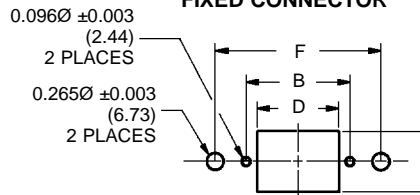
Typical Part Number: PLB08F10120



PANEL CUTOUT FOR
FLOATING CONNECTOR



PANEL CUTOUT FOR
FIXED CONNECTOR



MATERIALS AND FINISHES:

- Blind mating plate – Steel, zinc plate with dichromate seal.
- Blind mating guide – Stainless steel, passivated.
- Float screw – steel, zinc plate with dichromate seal.

Blind mating system provides lead in for 0.100(2.54) axial misalignment.

Blind mating system sold in a kit containing a connector-plate assembly, Blind mating guides, and float screws.

NOTE: Panel thickness may impact the orientation of mating end of blind mate pin. Shimming between the panel and the head of the blind mate pin may be necessary to minimize tilt of the blind mate system. Contact factory for additional technical information.

PART NUMBER	PANEL THICKNESS
PL****11*	0.040 (1.02)
PL****12*	0.060 (1.52)
PL****13*	0.090 (2.28)
PL****14*	0.120 (3.05)

CONNECTOR VARIANTS	A	B ±0.005	C	D ±0.005	D1 ±0.005	E ±0.005	E1 ±0.005	F ±0.005
PLA03	2.340 (59.44)	0.882 (22.40)	0.750 (19.05)	0.650 (16.51)	0.860 (21.84)	0.430 (10.92)	0.640 (16.26)	1.522 (38.66)
PLA04	2.537 (64.44)	1.079 (27.41)	0.750 (19.05)	0.847 (21.51)	1.057 (26.85)	0.430 (10.92)	0.640 (16.26)	1.719 (43.66)
PLA06	2.931 (74.45)	1.473 (37.41)	0.750 (19.05)	1.241 (31.52)	1.451 (36.86)	0.430 (10.92)	0.640 (16.26)	2.113 (53.67)
PLA08	3.325 (84.46)	1.867 (47.42)	0.750 (19.05)	1.635 (41.53)	1.845 (46.86)	0.430 (10.92)	0.640 (16.26)	2.507 (63.68)
PLB06	2.340 (59.44)	0.882 (22.40)	0.947 (24.05)	0.650 (16.51)	0.860 (21.84)	0.627 (15.93)	0.837 (21.26)	1.522 (38.66)
PLB08	2.537 (64.44)	1.079 (27.41)	0.947 (24.05)	0.847 (21.51)	1.057 (26.85)	0.627 (15.93)	0.837 (21.26)	1.719 (43.66)
PLB12	2.931 (74.45)	1.473 (37.41)	0.947 (24.05)	1.241 (31.52)	1.451 (36.86)	0.627 (15.93)	0.837 (21.26)	2.113 (53.67)
PLB16	3.325 (84.46)	1.867 (47.42)	0.947 (24.05)	1.635 (41.53)	1.845 (46.86)	0.627 (15.93)	0.837 (21.26)	2.507 (63.68)
PLC09	2.340 (59.44)	0.882 (22.40)	1.144 (29.06)	0.650 (16.51)	0.860 (21.84)	0.824 (20.93)	1.034 (26.26)	1.522 (38.66)
PLC12	2.537 (64.44)	1.079 (27.41)	1.144 (29.06)	0.847 (21.51)	1.057 (26.85)	0.824 (20.93)	1.034 (26.26)	1.719 (43.66)
PLC18	2.931 (74.45)	1.473 (37.41)	1.144 (29.06)	1.241 (31.52)	1.451 (36.86)	0.824 (20.93)	1.034 (26.26)	2.113 (53.67)
PLC24	3.325 (84.46)	1.867 (47.42)	1.144 (29.06)	1.635 (41.53)	1.845 (46.86)	0.824 (20.93)	1.034 (26.26)	2.507 (63.68)
PLC30	3.720 (94.49)	2.262 (57.45)	1.144 (29.06)	2.029 (51.54)	2.239 (56.87)	0.824 (20.93)	1.034 (26.26)	2.902 (73.71)

DIMENSIONS ARE IN INCHES (MILLIMETERS). ALL DIMENSIONS ARE SUBJECT TO CHANGE.