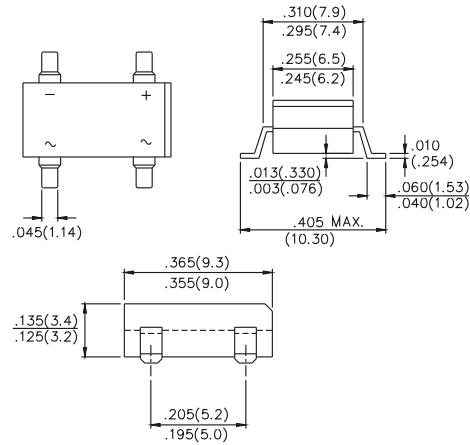
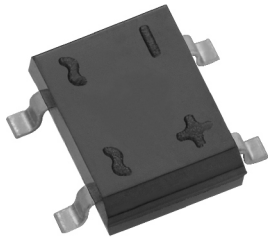


DF2005S thru DF210S

SURFACE MOUNT GLASS PASSIVATED BRIDGE RECTIFIERS SINGLE-PHASE GLASS BRIDGE

REVERSE VOLTAGE - 50 TO 1000 VOLTS FORWARD CURRENT - 2.0 AMPERES



Dimensions in inches and (millimeters)

FEATURES

- Rating to 1000V PRV
- Ideal for printed circuit board
- Low forward voltage drop, high current capability
- Reliable low cost construction utilizing molded Plastic technique results in inexpensive product
- Lead in plated copper
- The plastic material has UL flammability Classification 94V-0

MECHANICAL DATA

Polarity : As marked on body
Weight : 0.02 ounce, 0.38gram
Mounting position : Any

MAXIMUM RATINGS AND ELECTRICAL CHARACTERISTICS

Ratings at 25°C ambient temp. unless otherwise specified
Single phase, half sine wave, 60Hz, resistive or inductive load
For capacitive load, derate current by 20%

		DF 2005S	DF 201S	DF 202S	DF 204S	DF 206S	DF 208S	DF 210S	UNITS
Maximum Recurrent Peak Reverse Voltage	V_{RRM}	50	100	200	400	600	800	1000	Volts
Maximum RMS Bridge input Voltage	V_{RMS}	35	70	140	280	420	560	700	Volts
Maximum DC Blocking Voltage	V_{DC}	50	100	200	400	600	800	1000	Volts
Maximum Average Forward Rectified Current @ $T_A=40^\circ\text{C}$	$I_{(AV)}$	2.0							Amps
Peak Forward Surge Current, 8.3ms Single Half Sine-Wave Superimposed on Rated Load (JEDEC Method)	I_{FSM}	60							Amps
Maximum Forward Voltage at 2.0A DC	V_F	1.1							Volts
Maximum DC Reverse @ $T_J=25^\circ\text{C}$ at rated DC Blocking Voltage @ $T_J=125^\circ\text{C}$	I_R	10 500							μA
I^2t Rating for fusing ($t < 8.3\text{ms}$)	I^2t	10.4							A^2S
Typical Junction capacitance per element (Note 1)	C_J	25							pF
Typical Thermal resistance (Note 2)	$R_{\theta JA}$	40							$^\circ\text{C} / \text{W}$
Operating Temperature Range	T_J	-55 to +150							$^\circ\text{C}$
Storage Temperature Range	T_{STG}	-55 to +150							$^\circ\text{C}$

NOTES :

1. Measured at 1.0 MHz and Applied Reverse Voltage of 4.0 Volts DC
2. Thermal Resistance From Junction to Ambient and from junction to lead mounted on P.C.B with 0.5 x 0.5" (13x13mm) copper pads.

DF2005S thru DF210S

SURFACE MOUNT GLASS PASSIVATED BRIDGE RECTIFIERS SINGLE-PHASE GLASS BRIDGE

REVERSE VOLTAGE - 50 TO 1000 VOLTS FORWARD CURRENT - 2.0 AMPERES

FIG.1-DERATING CURVE FOR OUTPUT RECTIFIED CURRENT

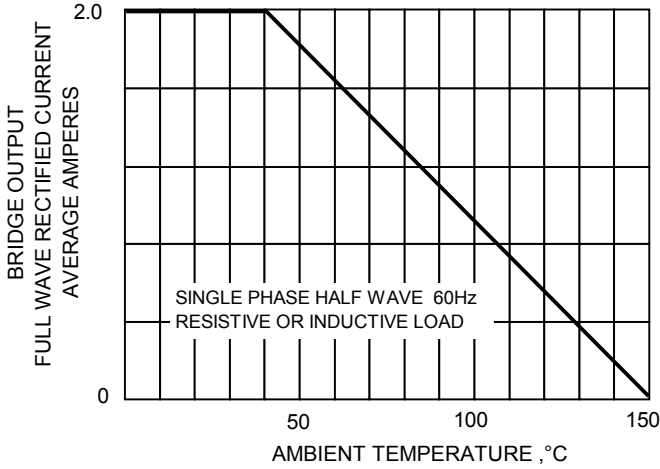


FIG.2-MAXIMUM NON-REPETITIVE PEAK FORWARD SURGE CURRENT

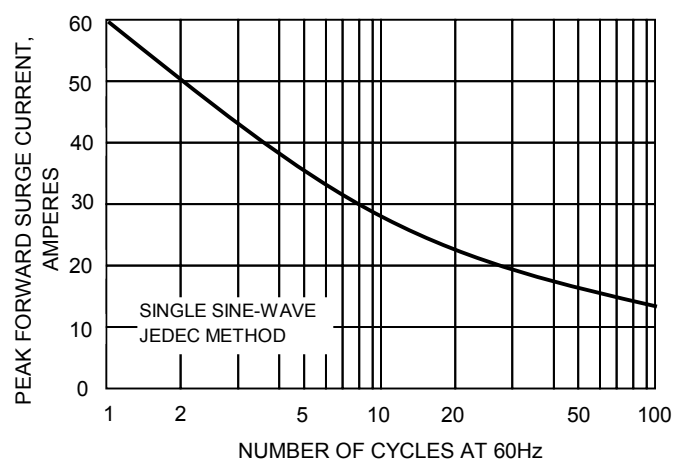


FIG.3-TYPICAL JUNCTION CAPACITANCE

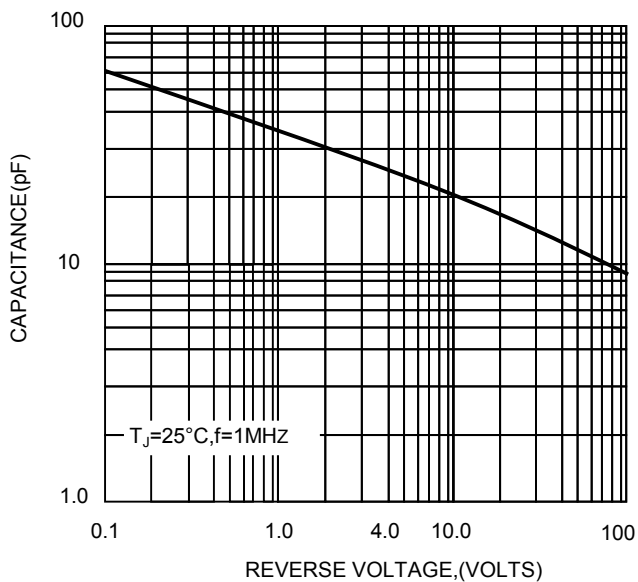


FIG.4-TYPICAL FORWARD CHARACTERISTICS

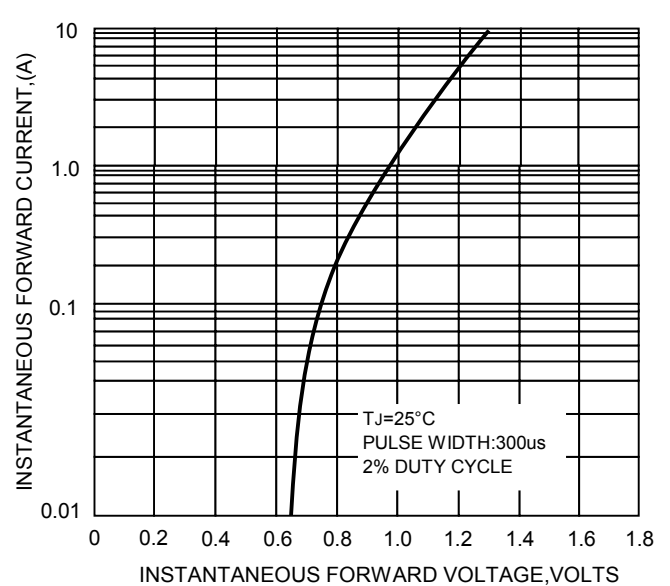


FIG.5-TYPICAL REVERSE CHARACTERISTICS

