

SURFACE MOUNT and PLUG-IN

SERIES E/SE

TYPICAL

CHARACTERISTICS:

Test conditions: 25°C ambient and input voltage at nominal value unless otherwise specified.
LINE REGULATION: OUTPUT IS DIRECTLY PROPORTIONAL TO THE INPUT.
Input voltage range: 5V models 4 to 6.5V DC
 12V models 9 to 15V DC
 15V models 12 to 18V DC
 24V models 17 to 28V DC
 28V models 21 to 32V DC
 48V models 25 to 50V DC

Output voltage tolerance at full load:
 5V models $\pm 0.25V$
 9V models $\pm 0.3V$
 12V & 15V models $\pm 0.4V$
 24V & 28V models $\pm 0.5V$
 48V models $\pm 0.7V$
Converter frequency: 20 to 40 KHz

Output temperature coefficient: 0.02%/°C

Operating temperature: -25°C to +70°C ambient.
 No heat sink is required.

Storage temperature: -55°C to +125°C
Isolation: 100 megohms min. @ 500V DC
Short circuit protection: Temporary

- OPTIONS AVAILABLE Selected MIL-STD-883**
- Expanded operating temp (-55°C to +85°C)
 - Stabilization Bake (125°C ambient)
 - Temperature Cycle (-55°C to +125°C)
 - Hi Temp burn in

Delivery - stock to one week

Low Profile 0.4" Height! Up to 7 Watts

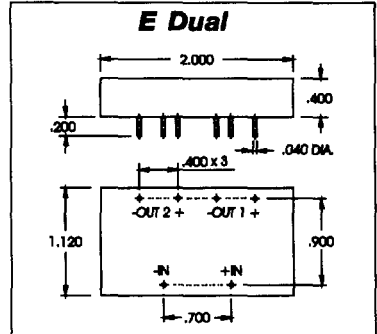
NO EXTERNAL CAPACITORS REQUIRED

No Heat Sink or Electrical Derating Required

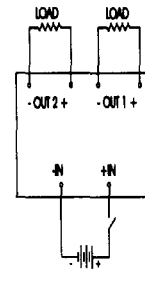
SERIES E/SE - DUAL OUTPUT

PICO PLUG-IN PART NUMBER	PICO SURFACE MOUNT PART NUMBER	INPUT VOLTAGE (V DC)	DUAL OUTPUT VOLTAGE (V DC)	MAX. LOAD CURRENT PER OUTPUT (mA)	MAX. OUTPUT POWER PER OUTPUT (WATTS)	EFF. @ FULL LOAD TYPICAL (%)	INPUT CURRENT FULL LOAD TYPICAL (mA)	OUTPUT VOLTAGE RIPPLE @ FULL LOAD (Vp-p max)	NO LOAD CURRENT TYPICAL (mA)	FULL LOAD OUTPUT VOLTAGE TOLERANCE (V DC)	PRICE 1-24
5E5D	5SE5D	5	5	400	2.0	68	1176	0.3	200	± 0.25	97.91
5E9D	5SE9D	5	9	250	2.25	74	1216	0.3	200	± 0.3	97.91
5E12D	5SE12D	5	12	187	2.25	77	1168	0.25	220	± 0.4	97.91
5E15D	5SE15D	5	15	150	2.25	79	1139	0.25	200	± 0.4	97.91
5E24D	5SE24D	5	24	93	2.25	80	1125	0.25	200	± 0.5	97.91
5E28D	5SE28D	5	28	80	2.25	80	1139	0.25	200	± 0.5	97.91
5E48D	5SE48D	5	48	46	2.25	80	1125	0.25	200	± 0.7	97.91
12E5D	12SE5D	12	5	400	2.0	75	444	0.3	40	± 0.25	97.91
12E9D	12SE9D	12	9	333	3.0	80	625	0.3	40	± 0.3	97.91
12E12D	12SE12D	12	12	270	3.25	83	652	0.25	40	± 0.4	97.91
12E15D	12SE15D	12	15	217	3.25	85	637	0.25	40	± 0.4	97.91
12E24D	12SE24D	12	24	140	3.375	86	654	0.25	40	± 0.5	97.91
12E28D	12SE28D	12	28	121	3.375	86	654	0.25	40	± 0.5	97.91
12E48D	12SE48D	12	48	70	3.375	88	654	0.25	40	± 0.7	97.91
24E5D	24SE5D	24	5	400	2.0	72	231	0.3	22	± 0.25	97.91
24E9D	24SE9D	24	9	333	3.0	79	316	0.3	22	± 0.3	97.91
24E12D	24SE12D	24	12	270	3.25	82	330	0.25	22	± 0.4	97.91
24E15D	24SE15D	24	15	217	3.25	85	318	0.25	22	± 0.4	97.91
24E24D	24SE24D	24	24	145	3.5	88	331	0.25	18	± 0.5	97.91
24E28D	24SE28D	24	28	125	3.5	88	331	0.25	18	± 0.5	97.91
24E48D	24SE48D	24	48	73	3.5	88	331	0.25	18	± 0.7	97.91
28E5D	28SE5D	28	5	400	2.0	69	207	0.3	25	± 0.25	97.91
28E9D	28SE9D	28	9	333	3.0	80	268	0.3	25	± 0.3	97.91
28E12D	28SE12D	28	12	270	3.25	80	290	0.25	25	± 0.4	97.91
28E15D	28SE15D	28	15	217	3.25	82	283	0.25	22	± 0.4	97.91
28E24D	28SE24D	28	24	145	3.5	88	284	0.25	20	± 0.5	97.91
28E28D	28SE28D	28	28	125	3.5	88	284	0.25	20	± 0.5	97.91
28E48D	28SE48D	28	48	73	3.5	88	284	0.25	20	± 0.7	97.91
48E5D	48SE5D	48	5	400	2.0	74	113	0.3	6	± 0.25	104.72
48E9D	48SE9D	48	9	333	3.0	80	156	0.3	6	± 0.3	104.72
48E12D	48SE12D	48	12	270	3.25	85	160	0.3	6	± 0.4	104.72
48E15D	48SE15D	48	15	217	3.25	85	160	0.3	6	± 0.4	104.72
48E24D	48SE24D	48	24	145	3.5	88	166	0.3	6	± 0.5	104.72
48E28D	48SE28D	48	28	125	3.5	89	164	0.3	6	± 0.5	104.72

Ordering Instruction: No minimum. Net 30 days F.O.B. Pelham, New York

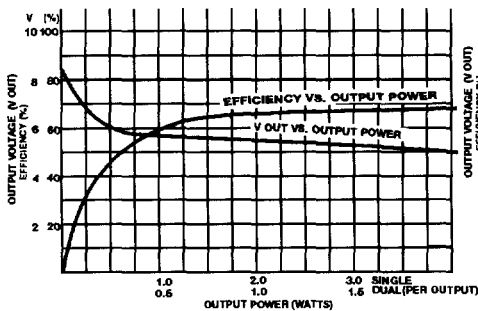


BOTTOM VIEW
 Typical Weight: 33 Grams
 NOTE: ALL DIMENSIONS ARE IN INCHES

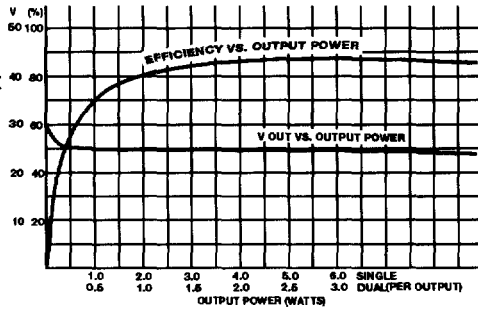


For Land Pattern Dimensions See Pg. 104 Fig. 6

SINGLE & DUAL 5V-5V

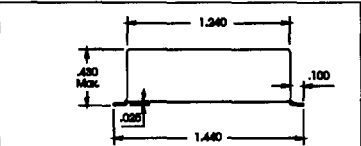


SINGLE & DUAL 24V-24V

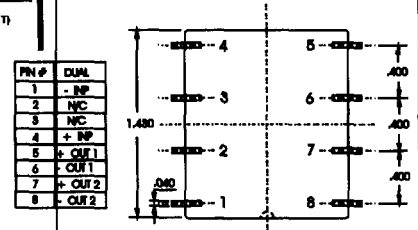


For immediate engineering assistance or to place an order -
 Call Toll Free 800-431-1064

PICO Electronics, Inc.
 143 Sparks Avenue, Pelham, NY 10803-1837 • FAX 914-738-8225
 www.picoelectronics.com • E-Mail: info@picoelectronics.com



SE Dual



BOTTOM VIEW
 Typical Weight: 33 Grams