

**Screw Termination**

**D-ST SERIES**

**SPECIFICATIONS:**

**MATERIALS AND PLATINGS**

Shells	Steel Tin plated
Insulator	Glass filled thermoplastic, UL94V-0
Contacts	Machined brass, full gold

**ELECTRICAL DATA**

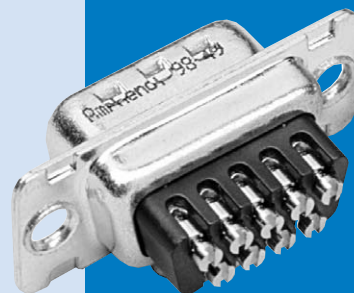
Current Rating	7,5 A max.
Voltage Rating	300 V RMS at 50 Hz
Withstanding Voltage	1000 V RMS at 50 Hz
Insulation Resistance	> 5000 Ω at 500 V DC
Contact Resistance	< 5 Ω

**CLIMATIC DATA**

Operating Temperature	-67°F (-55°C) to +185°F (85°C), peak at 257°F (125°C)
Damp Heat	21 days 219°F(104°C - 95% HR)
Salt Spray	48 hours

**MECHANICAL DATA**

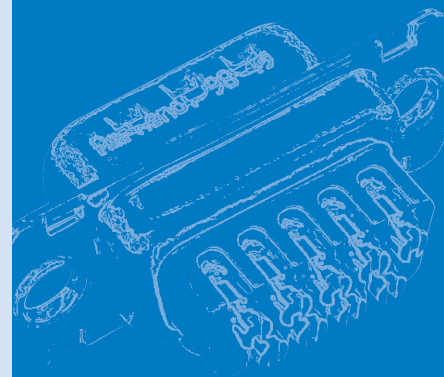
Cable Type	Solid or stranded
Cable Gauge	0,75 mm <sup>2</sup> max. (AWG 18) - For bigger wire, please consult factory
Screw Torque	0,05 mN max.
Mating Cycles	100 (class II) or 500 (class I)



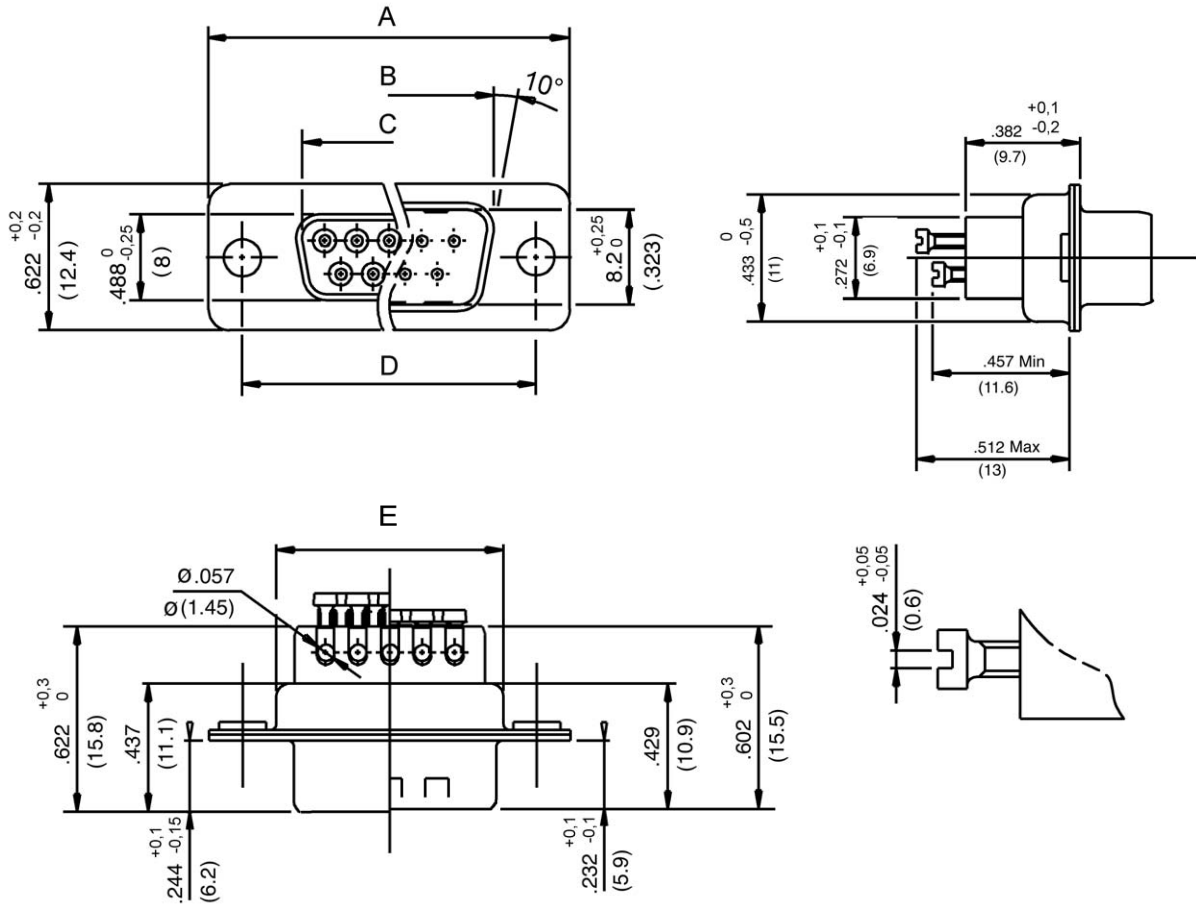
The Amphenol Screw Termination D-Sub series is especially designed for field applications.

These new connectors permit easy wiring without any specific tool; only a standard electrician's screwdriver is required. Due to their reduced overall dimensions, these connectors are compatible with all standard hoods and accessories.

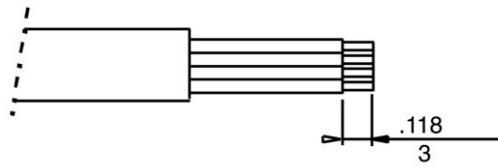
- Industry - control of speed variators and calculators.
- Houses and public buildings - control of heating, air conditioning, lighting, shutters and fire safety.
- Infrastructures - fluids control, motorway tolls and street lighting.



INCHES (MM)



Cable stripping



SIZE	A +.010 (0.25) -.010 (0.25)	B 0 -.008 (0.2)	C +.008 (0.2) 0	D +.004 (0.1) -.004 (0.1)	E +.004 (0.1) -.016 (0.4)
9	1.209 (30.7)	.646 (16.4)	.661 (16.8)	.984 (25)	.370 (19.4)
15	1.535 (39)	.976 (24.8)	.988 (25.1)	1.311 (33.3)	1.091 (27.7)
25	2.083 (52.9)	1.516 (38.5)	1.528 (38.8)	1.850 (47)	1.630 (41.4)
37	2.724 (69.2)	2.161 (54.9)	2.177 (55.3)	2.500 (63.5)	2.280 (57.9)

ORDERING INFORMATION

**717D - E09 - P - ST - 1**

**Class II:** 77D Female connector  
717D Male connector, shells with dimples

**Class I:** 177D Female connector  
777D Male connector, shells with dimples

**Size and number of contacts** E09, A15, B25, C37

**Type of contact:** P Male  
S Female

**Kit connector + hood option:** (See following description)  
1 DPPK hood  
2 DSSK hood  
3 DTZK hood  
4 DVZK hood

**Contact termination:** ST Screw termination

PLASTIC HOODS



DPPK Straight cable entry

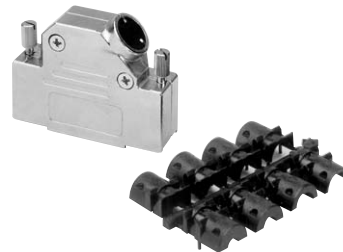


DSSK Angled cable entry

METALLIC HOODS



DTZK Straight cable entry



DVZK Angled cable entry

INCHES (MM)