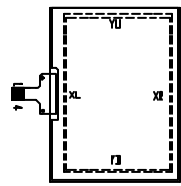
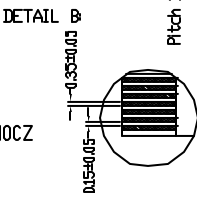
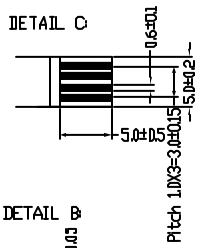
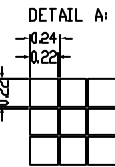
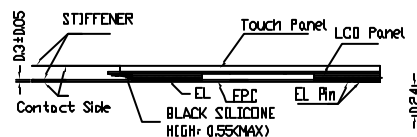


I/O PORTS

NO.	SYMBOL
1	V5
2	V2
3	VEE
4	VDD
5	FRM
6	VGND
7	LOAD
8	VSS
9	DF
10	3/OFF
11	CP
12	V4
13	V3
14	D3
15	D2
16	D1
17	D0
18	VGND
19	VSS
20	EL1
21	VSS
22	EL2



TOUCH PANEL I/O PORTS

1	YU	GLASS TERMINAL
2	XL	FILM TERMINAL
3	YD	GLASS TERMINAL
4	XR	FILM TERMINAL

- NOTES:**
- DISPLAY TYPE: STN or FSTN
 - VIEWING DIRECTION: 600 or 1200
 - POLARIZER MODE: TRANSLLECTIVE/POSITIVE
 - DRIVE METHOD: 1/240 DUTY 1/13 BIAS
 - LCD OPERATING VOLTAGE: 21.5V VDD=2.4~5.5V
 - OPERATING TEMP.: NORMAL or WIDE
 - STORAGE TEMP.: NORMAL or WIDE
 - CONNECTOR: FPC
 - DRIVER: S6B0794X01-B0C2 + S6B0796X01-B0C2
 - BACKLIGHT TYPE: NONE or EL
 - OTHER OPTIONS: WITH or WITHOUT TOUCHSCREEN

TIAN-MA MICROELECTRONICS CO.
6/F., CASTLE Building, Shenzhen Road, Central, Shenzhen, China.

DRAWN BY:	TITLE: TM6024H-A-5	
CHECKED BY:	DATE: NO. G-2	
APPROVED BY:	DATE: 2011	SCALE: 1:1
COMPLETED BY:	DATE: 2011	SECRET NO: 07