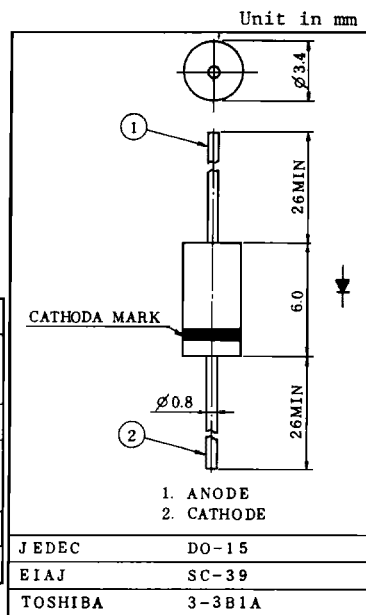


SWITCHING TYPE POWER SUPPLY APPLICATIONS.

- . Repetitive Peak Reverse Voltage : $V_{RRM}=1000V$
- . Average Forward Current : $I_{F(AV)}=1.0A$
- . Very Fast Reverse-Recovery Time : $t_{rr}=100ns$

MAXIMUM RATINGS

CHARACTERISTIC	SYMBOL	RATING	UNIT
Repetitive Peak Reverse Voltage	V_{RRM}	1000	V
Average Forward Current	$I_{F(AV)}$	1.0	A
Peak One Cycle Surge Forward Current (Non-Repetitive)	I_{FSM}	10(50Hz)	A
		11(60Hz)	
Junction Temperature Range	T_j	-40~150	°C
Storage Temperature Range	T_{stg}	-40~150	°C



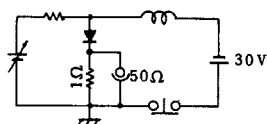
ELECTRICAL CHARACTERISTICS ($T_a=25^\circ C$)

CHARACTERISTIC	SYMBOL	TEST CONDITION	MIN.	TYP.	MAX.	UNIT
Peak Forward Voltage	V_{FM}	$I_{FM}=1.0A$	-	-	3.3	V
Repetitive Peak Reverse Current	I_{RRM}	$V_{RRM}=\text{Rated}$	-	-	100	μA
Reverse Recovery Time (Note 1)	t_{rr}	$I_F=1A, di/dt=-30A/\mu s$	-	-	100	ns
Forward Recovery Time (Note 2)	t_{fr}	$I_F=1.0A$	-	300	-	ns
Thermal Resistance (Note 3)	$R_{th(j-a)}$	Junction to Ambient	-	-	60	°C/W
Thermal Resistance (Note 3)	$R_{th(j-l)}$	Junction to Lead	-	-	34	°C/W

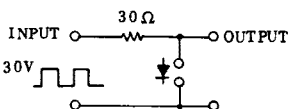
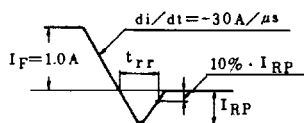
Note 1 : t_{rr} TEST CIRCUIT

Note 2 : t_{fr} TEST CIRCUIT

Note 3 : THERMAL RESISTANCE



WAVEFORM



WAVEFORM

