

- Exhibits Leakage Currents approaching the theoretical bulk characteristics of silicon
 - Oxide and Nitride passivation for long-term stable device performance
 - Available for upscreen to MIL-PRF-19500 requirements
- Voidless hermetically sealed glass package
 - Metallurgically Bonded double plug construction
 - PICO Amp Low Leakage Diodes

DEVICES

DR5100	DR5139	LR5100	LR5139
DR5101	DR5140	LR5101	LR5140
DR5102		LR5102	
DR5103		LR5103	

LEVELS
COMMERCIAL
MAXIMUM RATING AT 25°C

Operating Temperature: -65°C to +175°C
 Storage Temperature: -65°C to +175°C

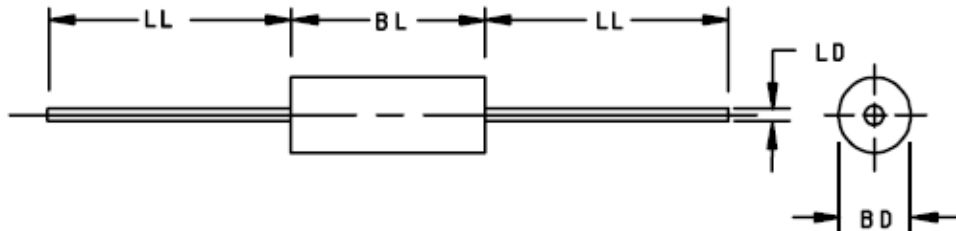
ELECTRICAL CHARACTERISTICS ($T_A = 25^\circ\text{C}$, unless otherwise specified)

TYPE NUMBER	MINIMUM BEAKDOWN VOLTAGE	MAXIMUM REVERSE VOLTS	MAXIMUM REVERSE LEAKAGE CURRENT		MAXIMUM FORWARD VOLTAGE	MAXIMUM CAPACITANCE		PACKAGE
	$V_{BR} @ 100\mu\text{A}$ $T_A = 25^\circ\text{C}$	V_R	$I_R @ V_R$ $T_A = 25^\circ\text{C}$	$I_R @ V_R$ $T_A = 150^\circ\text{C}$	$V_F @ 100\text{mA}$ $T_A = 25^\circ\text{C}$	C @ V_R f = 1.0MHz		
	VOLTS	VOLTS	pA	nA	V	0V pF	10V pF	
DR5100	75	20	10	50	1.2	6	3	DO-35
DR5101	75	20	20	100	1.2	6	3	DO-35
DR5102	75	20	10	50	1.2	6	3	DO-35
DR5103	75	20	20	100	1.2	6	3	DO-35
DR5139	75	50	50	150	1.2	6	3	DO-35
DR5140	110	100	125	200	1.2	6	3	DO-35
LR5100	75	20	10	50	1.2	6	3	DO-213AA
LR5101	75	20	20	100	1.2	6	3	DO-213AA
LR5102	75	20	10	50	1.2	6	3	DO-213AA
LR5103	75	20	20	100	1.2	6	3	DO-213AA
LR5139	75	50	50	150	1.2	6	3	DO-213AA
LR5140	110	100	125	200	1.2	6	3	DO-213AA


DO-35

DO-213AA

► **PACKAGE DIMENSIONS**



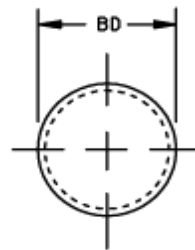
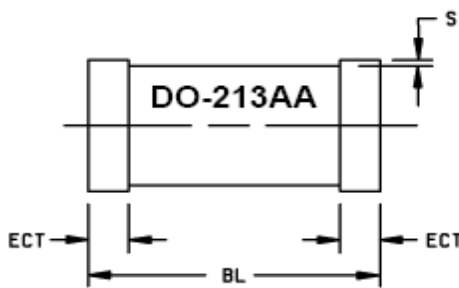
NOTES:

1. Dimensions are in inches. Millimeters are given for general information only.
2. In accordance with ASME Y14.5M, diameters are equivalent to Φ symbology.

Symbol	Dimensions (DO-35)			
	Inches		Millimeters	
	Min	Max	Min	Max
BD	.056	.075	1.42	1.91
BL	.140	.180	3.56	4.57
LD	.018	.022	0.46	0.56
LL	1.000	1.500	25.40	38.10
BD	.050	.075	1.27	1.90

MECHANICAL CHARACTERISTICS:

Case: Hermetically sealed glass case.
 Lead material: Silver / Dumet, Braze Alloy Category II
 Marking: Body painted, alpha numeric.
 Polarity: Cathode band.



NOTES:

1. Dimensions are in inches. Millimeters are given for general information only.
2. Dimensions are pre-solder dip.
3. Referencing to dimension S, minimum clearance of glass body to mounting surface on all orientations.
4. In accordance with ASME Y14.5M, diameters are equivalent to Φ symbology.

Symbol	Dimensions (DO-213)			
	Inches		Millimeters	
	Min	Max	Min	Max
BD	.063	.067	1.60	1.70
BL	.130	.146	3.30	3.71
ECT	.016	.022	0.41	0.56
S	.001		0.03	