

**SPECIFICATIONS**

**Mechanical**

**Centre Contact Capvtivation:** 10N.  
**Durability:** 500 Cycles

**Electrical**

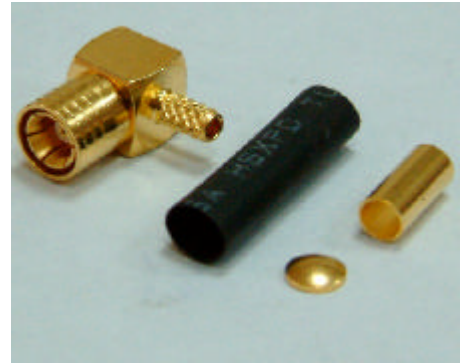
**Nominal Impedance:** 50W  
**Frequency Range:** 0-4GHz  
**Centre Contact Resistance:** 5.0mW max.  
**Insulation Resistance:** 1000MW min.

**Physical**

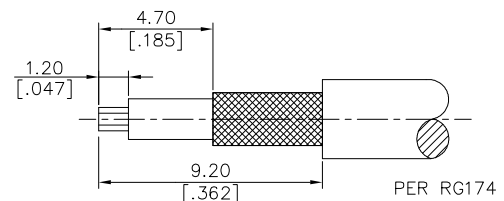
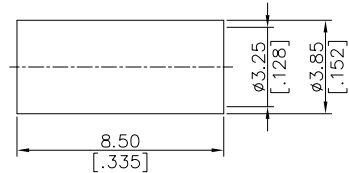
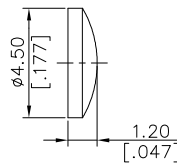
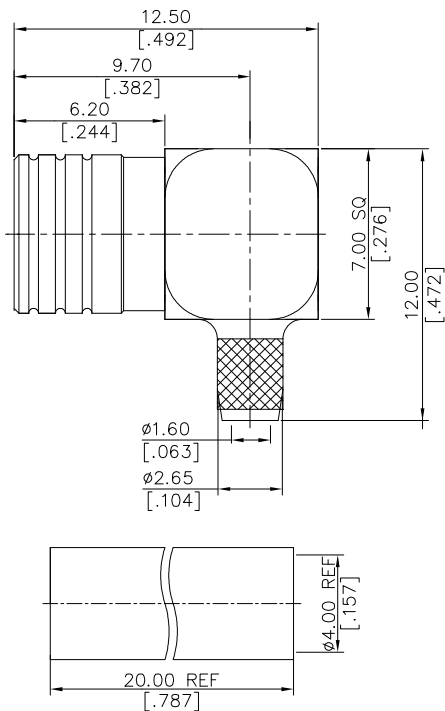
**Body:** Copper Alloy  
**Insulator:** Engineering Plastic  
**Contact:** Copper Alloy  
**Plating:** See "ORDERING INFORMATION"

**RF Coaxial Connector**

**SMB Series**  
**SMB R/A For Cable Jack**



**DRAWING**



PER RG174  
 RECOMMENDED CABLE STRIPPING DIM'S

**ORDERING INFORMATION**

**PRODUCT NO. : KF 6 3C 0 8 - 8 R04 - 4 Y**

