



Micro Commercial Components

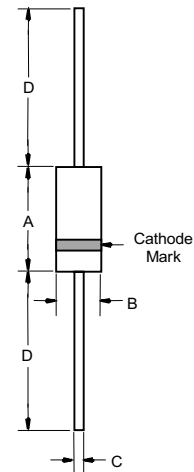


Micro Commercial Components  
 20736 Marilla Street Chatsworth  
 CA 91311  
 Phone: (818) 701-4933  
 Fax: (818) 701-4939

**1SS244**

**300mW  
 Switching Diode  
 250 Volts**

**DO-34**



**Features**

- Lead Free Finish/Rohs Compliant (Note1) ("P" Suffix designates Compliant. See ordering information)
- High voltage switching
- General purpose rectification
- $V_{RM}=250V$  guaranteed.
- High reliability.
- Silicon epitaxial planar
- Marking : Cathode band and type number
- Moisture Sensitivity Level 1

**Absolute maximum Ratings**

Symbol	Rating	Rating	Unit
$V_{RM}$	Peak Reverse Voltage	250	V
$V_R$	DC Reverse Voltage	220	V
$I_{FM}$	Peak Forward Current	625	mA
$I_O$	Mean Rectifying Current	200	mA
$I_{SURGE}$	Surge Current (1s)	1000	mA
$P_D$	Power Dissipation	300	mW
$T_J$	Operating Junction Temperature	-55 to +150	$^{\circ}C$
$T_{STG}$	Storage Temperature	-55 to +150	$^{\circ}C$

**Electrical Characteristics @ 25 $^{\circ}C$  Unless Otherwise Specified**

Symbol	Parameter	Min	Max	Units
$V_F$	Forward Voltage ( $I_F=200mA$ )	---	1.5	Vdc
$I_R$	Reverse Current ( $V_R=220Vdc$ )	---	10	$\mu A$
$C_T$	Capacitance Between Terminals ( $V_R=0Vdc, f=1.0MHz$ )	---	3.0	pF
$t_{rr}$	Reverse Recovery Time ( $I_R=20mA, I_F=20mA, R_L=50\Omega$ )	---	75	ns

Note: 1. Lead in Glass Exemption Applied, see EU Directive Annex 5.

DIMENSIONS					
DIM	INCHES		MM		NOTE
	MIN	MAX	MIN	MAX	
A	.094	.118	2.40	3.00	
B	.063	.079	1.60	2.00	
C	.012	.020	0.30	0.50	
D	1.102	1.181	28.00	30.00	

# 1SS244

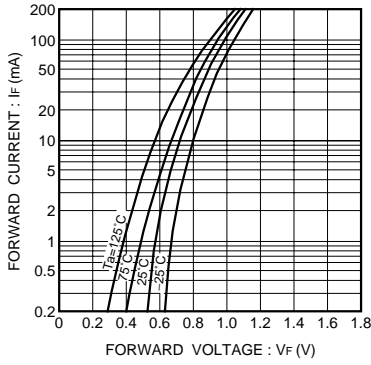


Fig.1 Forward characteristics

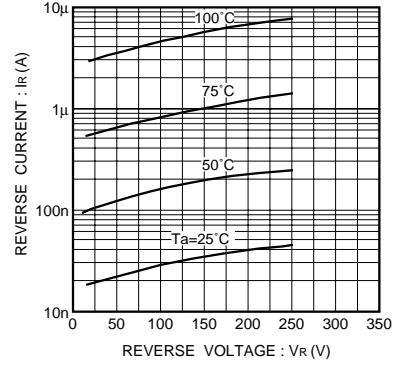


Fig.2 Reverse characteristics

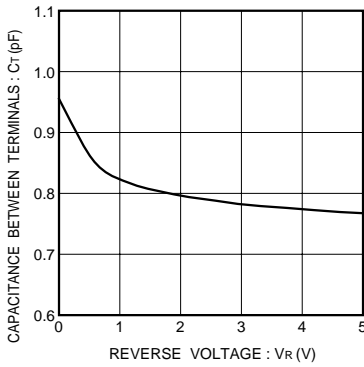


Fig.3 Capacitance between terminals characteristics

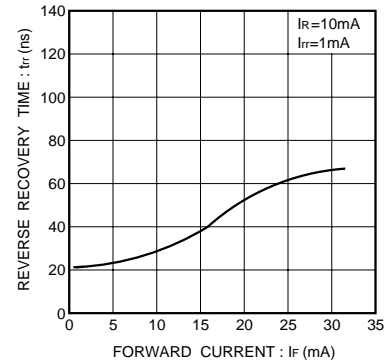


Fig.4 Reverse recovery time characteristics

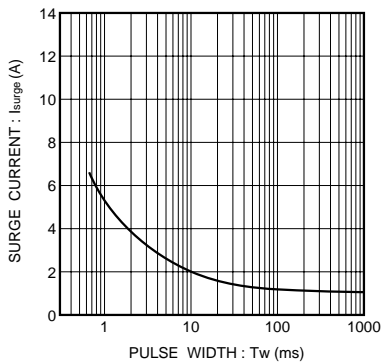


Fig.5 Surge current characteristics

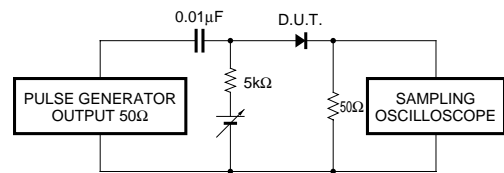


Fig.6 Reverse recovery time ( $t_{rr}$ ) measurement circuit



TM

Micro Commercial Components

### Ordering Information :

Device	Packing
Part Number-TP	Tape&Reel: 10Kpcs/Reel
Part Number-AP	Ammo Packing: 5Kpcs/Ammo Box

#### \*\*\*IMPORTANT NOTICE\*\*\*

**Micro Commercial Components Corp.** reserves the right to make changes without further notice to any product herein to make corrections, modifications , enhancements , improvements , or other changes . **Micro Commercial Components Corp .** does not assume any liability arising out of the application or use of any product described herein; neither does it convey any license under its patent rights ,nor the rights of others . The user of products in such applications shall assume all risks of such use and will agree to hold **Micro Commercial Components Corp .** and all the companies whose products are represented on our website, harmless against all damages.

#### \*\*\*LIFE SUPPORT\*\*\*

MCC's products are not authorized for use as critical components in life support devices or systems without the express written approval of Micro Commercial Components Corporation.

#### \*\*\*CUSTOMER AWARENESS\*\*\*

Counterfeiting of semiconductor parts is a growing problem in the industry. Micro Commercial Components (MCC) is taking strong measures to protect ourselves and our customers from the proliferation of counterfeit parts. MCC strongly encourages customers to purchase MCC parts either directly from MCC or from Authorized MCC Distributors who are listed by country on our web page cited below. Products customers buy either from MCC directly or from Authorized MCC Distributors are genuine parts, have full traceability, meet MCC's quality standards for handling and storage. **MCC will not provide any warranty coverage or other assistance for parts bought from Unauthorized Sources.** MCC is committed to combat this global problem and encourage our customers to do their part in stopping this practice by buying direct or from authorized distributors.

[www.mccsemi.com](http://www.mccsemi.com)