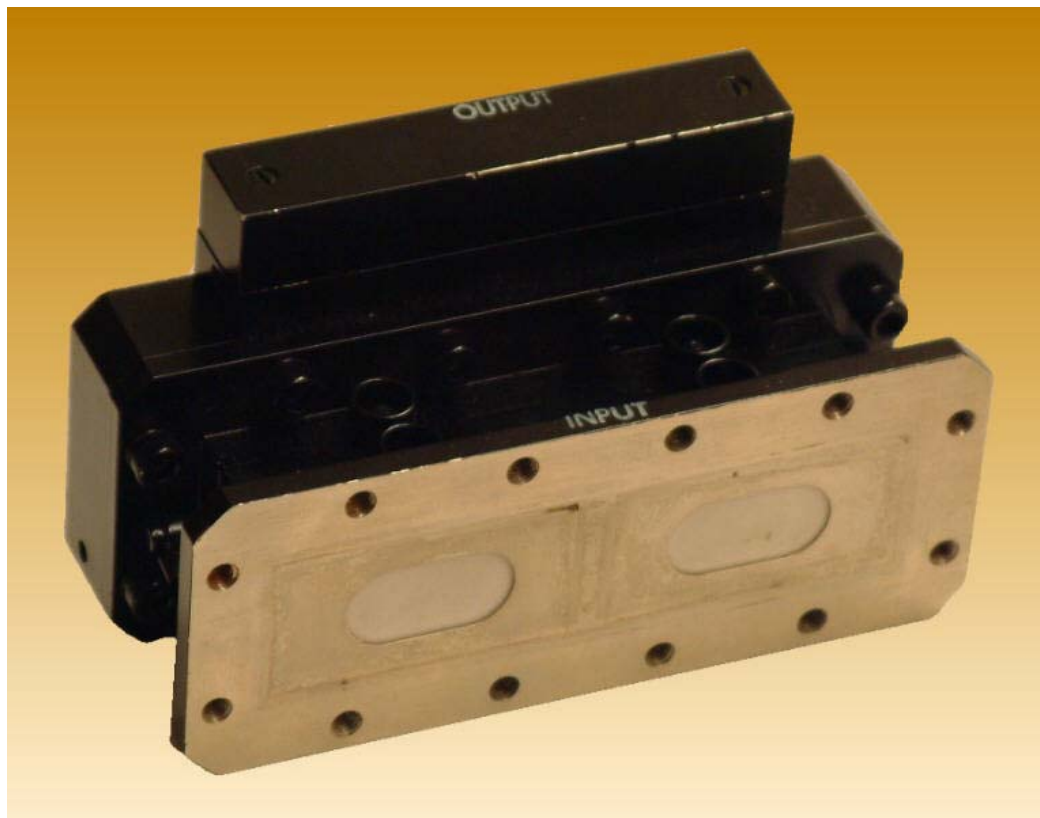


# VDC1046 Dual TR Limiter



## Description:

Dual C-Band TR Limiter suitable for use in a balanced hybrid duplexer.

## Features:

- Frequency: 5.4 - 5.9 GHz
- Peak Power: 3000 kW
- Duty Cycle: 0.001
- Pulwidth: 1.0  $\mu$ Sec
- Insertion Loss: 1.0 dB max
- VSWR: 1.2:1 max
- Flat Leakage: 10 mW max
- Spike Leakage: 0.05 ergs max
- Recovery Time: 7  $\mu$ Sec max

150 Sohier Road  
Beverly, Massachusetts 01915



Phone: 978-922-6000 Fax: 978-922-2736  
E-Mail: [marketing@bmd.cpii.com](mailto:marketing@bmd.cpii.com)  
Internet: [www.cpii.com/bmd](http://www.cpii.com/bmd)