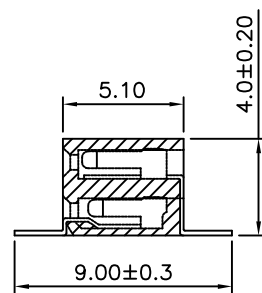
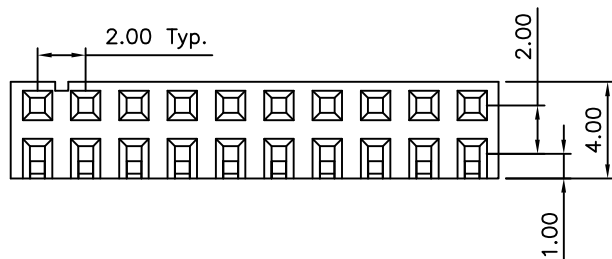


CONTACTS	DIMENSIONS	
	A	B
6	4.0	6.0
8	6.0	8.0
10	8.0	10.0
12	10.0	12.0
14	12.0	14.0
16	14.0	16.0
18	16.0	18.0
20	18.0	20.0
22	20.0	22.0
24	22.0	24.0
26	24.0	26.0
28	26.0	28.0
30	28.0	30.0
32	30.0	32.0
34	32.0	34.0
36	34.0	36.0
38	36.0	38.0
40	38.0	40.0
42	40.0	42.0
44	42.0	44.0
46	44.0	46.0
48	46.0	48.0
50	48.0	50.0



**SPECIFICATIONS 规格**  
 CURRENT RATING 电流额定值: 2 AMP  
 INSULATOR RESISTANCE 绝缘电阻值: 1000 MEGOHMS MIN.  
 CONTACT RESISTANCE 接触电阻值: 20m OHMS MAX.  
 DIELECTRIC WITHSTANDING 耐电压: AC 500 V  
 OPERATING TEMPERATURE 工作温度: -40°C TO +105°C  
 CONTACT MATERIAL 端子物料: PHOSPHOR BRONZE  
 INSULATOR MATERIAL 绝缘体物料:  
 STANDARD 标准物料: POLYAMIDE 聚酰胺, NYLON 6T, UL 94-V0  
 OPTIONS 可选物料: POLYESTER 聚酯, LCP, UL 94-V0  
 SOLDERING PROCESS 可焊性:  
 NYLON 6T (STANDARD 标准物料) -  
 IR REFLOW 回流焊: 260°C for 10 sec.  
 WAVE 波峰焊: 230°C for 5-10 sec.  
 MANUAL SOLDER 人工焊接: 350°C for 3-5 sec  
 LCP (OPTION 可选物料) -  
 IR REFLOW 回流焊: 260°C for 10 sec. **△**  
 WAVE 波峰焊: 250°C for 5-10 sec.  
 MANUAL SOLDER 人工焊接: 350°C for 3-5 sec **△**

**Ordering Grid**

BF115 - XX - X - X - X

**REQUEST SAMPLES AND QUOTATION**

No. of Contacts: 06 to 50

Insulator Material:  
**N = Nylon 6T (Standard)**  
 L = LCP

Contact Plating:  
 A = Gold Flash All Over  
 B = Selective Gold Flash Contact Area/  
 Tin On Tail  
 C = Tin All Over  
 G = 10µ" Gold Contact Area/Tin On Tail  
 I = 30µ" Gold Contact Area/Tin On Tail  
**Standard = Gold Flash All Over**

Packing Options **△**  
**A = Tape and Reel (Standard)**  
 D = Tube

**MATES WITH 配套之母座 (SUBJECT TO PIN LENGTH 在端子长度适合的条件下):**  
 BF030 BF045 BF050 BF055 BF060  
 BF135 BF140 BF145

By	LYH	PN	DR
DETAIL	DRAWING RELEASE	TOLERANCES AMENDED PACKING OPTIONS CHANGED	CHANGE TO SOLDER TEMP. INFORMATION
REV DATE	A 31/10/07	B 30/04/09	C 05/08/09



Tolerances (Except as noted)	Part Number:-	Date:-
Dimensions in mm	BF115	31 OCT 07
X.X ± 0.38 X° ± 5°	Description:- 2.0mm PITCH SOCKET, DUAL ROW, SURFACE MOUNT, HORIZONTAL	
X.XX ± 0.25 X° ± 2°		
X.XXX ± 0.13 XX° ± 1°		
XXX° ± 0.5°		
Third Angle Projection	© THIS DRAWING IS CONFIDENTIAL AND MUST NOT BE COPIED OR DISCLOSED WITHOUT WRITTEN CONSENT	

**Global Connector Technology**  
 www.globalconnectortech.com



Scale NTS	Revision C	Material See Note	Drawn by LYH	E & OE	Sheet No. 1/1
-----------	------------	-------------------	--------------	--------	---------------