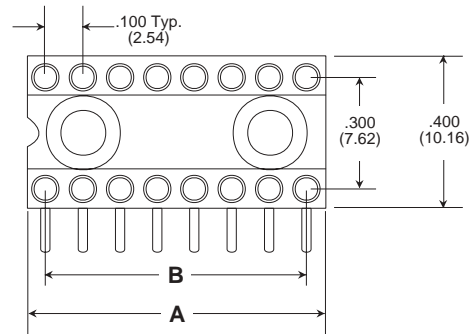
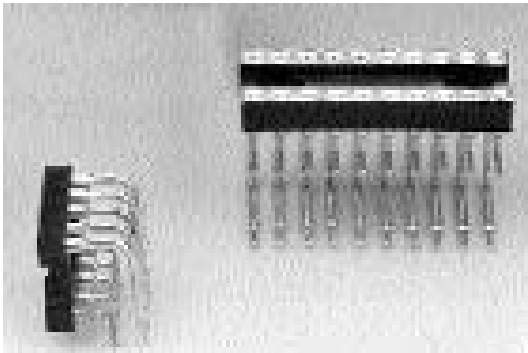


Closed Frame LED (Light Emitting Diode) Sockets



Features:

- Right angle design allows readable position of LED on PCB.
- Multiple finger contact for reliability.
- Tapered entry for ease of insertion.
- Closed bottom sleeve for 100% anti-wicking of solder.

Terminals and Contacts:

Terminal: Brass - Copper Alloy (C36000) ASTM-B-16

Contact: Beryllium Copper - Copper Alloy (C17200), ASTM-B-194

Plating:

Terminal: Gold over Nickel or Tin-Lead over Nickel

Contact: Gold over Nickel or Tin-Lead over Nickel

Gold per MIL-G-45204

Tin-Lead per MIL-P-81728

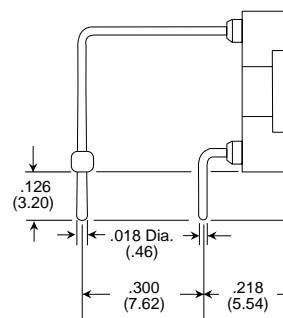
Nickel per QQ-N-290

Body Material:

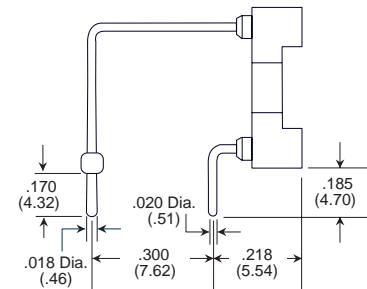
Glass Filled Thermoplastic Polyester (P.B.T.), U.L. Rated 94V-O, -60°C to 140°C (-76°F to 284°F)

Terminals

Type -370



Type -31



Part Number	# of Pins	A	B
DL306-XXXTG	6	.295 (7.49)	.200 (5.08)
DL308-XXXTG	8	.395 (10.03)	.300 (7.62)
DL310-XXXTG	10	.495 (12.57)	.400 (10.16)
DL314-XXXTG	14	.695 (17.65)	.600 (15.24)
DL316-XXXTG	16	.795 (20.19)	.700 (17.78)
DL318-XXXTG	18	.895 (22.73)	.800 (20.32)
DL320-XXXTG	20	.995 (25.27)	.900 (22.86)

XXX denotes terminal type