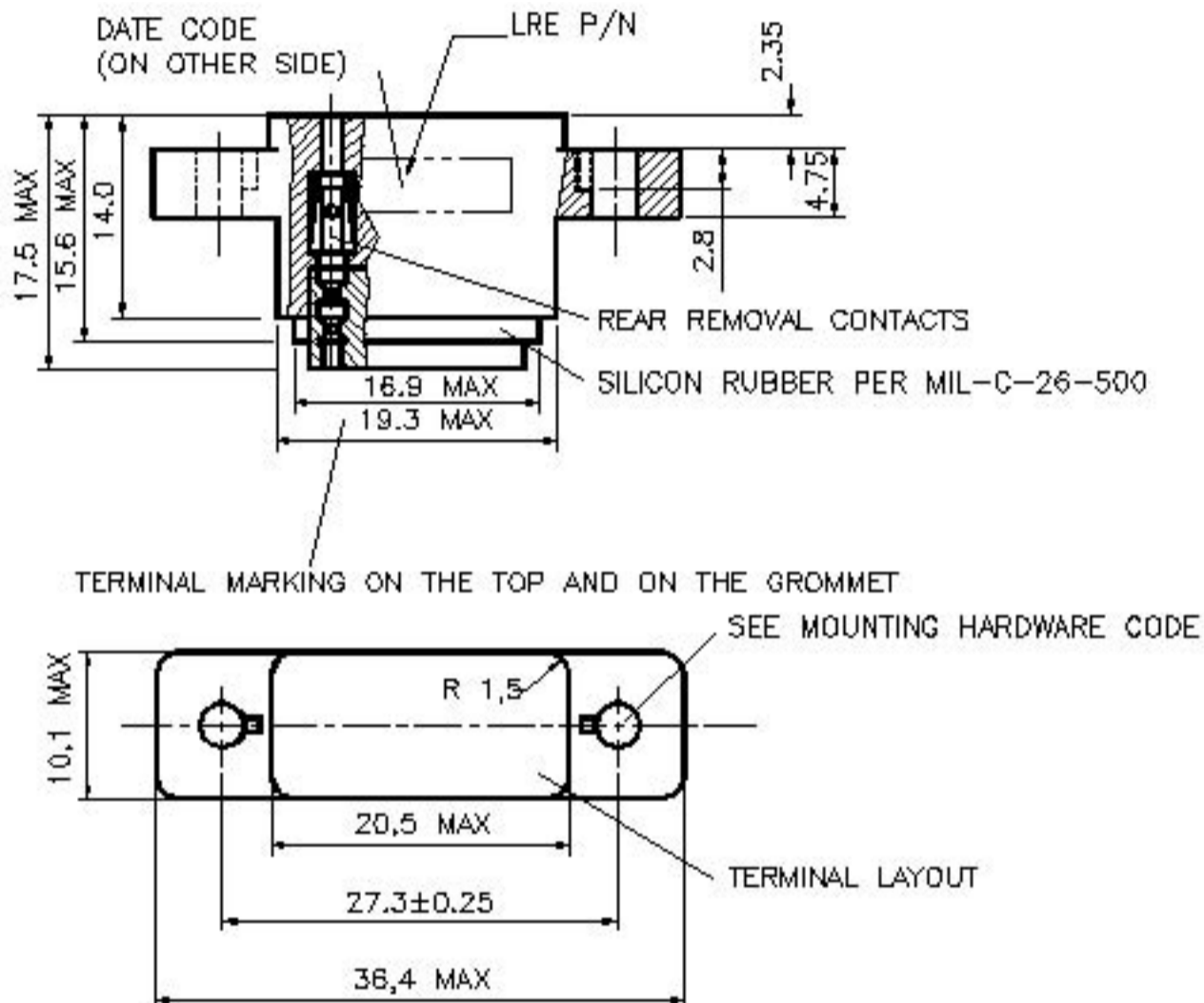


BASIC SOCKET SERIES DESIGNATION FOR:

Series M210 (DC Coil)



GENERAL CHARACTERISTICS

Crimp tool	M 22520/7-01 with turret M 22520/7-12.
Insertion and extraction tool	MS 27534-20 or M 81969/16-01.
Weight	15g max.
Temperature range	-70° C to +125° C.

This connection is designed to the standards and requirements of MIL-S-12883 Contacts and hardware to be delivered disassembled in a plastic bag. Tolerances, unless otherwise specified, ±0.12mm.



Featuring **LEACH**® power and control solutions
www.esterline.com

AMERICAS
6900 Orangethorpe Ave.
P.O. Box 5032
Buena Park, CA 90622

EUROPE
2 Rue Goethe
57430 Sarralbe
France

ASIA
Units 602-603 6/F Lakeside 1
No.8 Science Park West Avenue
Phase Two, Hong Kong Science Park
Pak Shek Kok, Tai Po, N.T.
Hong Kong

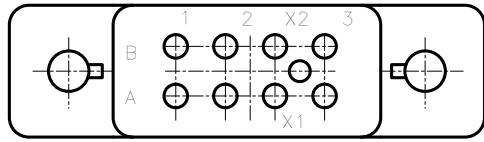
Tel: (01) 714-736-7599
Fax: (01) 714-670-1145

Tel: (33) 3 87 97 31 01
Fax: (33) 3 87 97 96 86

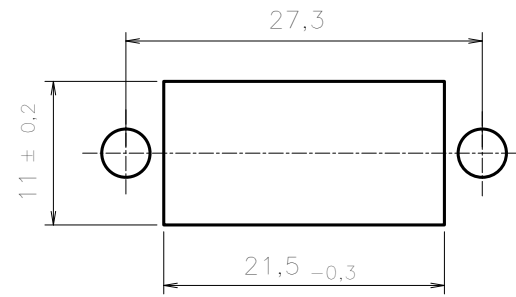
Tel: (852) 2 191 3830
Fax: (852) 2 389 5803

Data sheets are for initial product selection and comparison. Contact Esterline Power Systems prior to choosing a component.

CODE A



MOUNTING HOLE LAYOUT

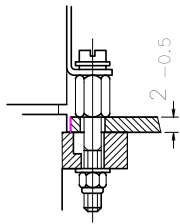


FOR HOLE CLEARANCE,
SEE HARDWARE CODE

MOUNTING HARDWARE

CODE 1 : 14-464-01 CODE 2 : 14-464-02

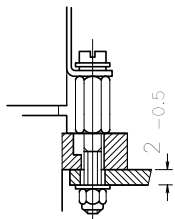
LOOSE METRIC
HARDWARE
BOTTOM MOUNT



MOUNTING HOLE:3,6 mm

MOUNTING TORQUE
0,45 Nm ±0,1 Nm

LOOSE METRIC
HARDWARE
TOP MOUNT

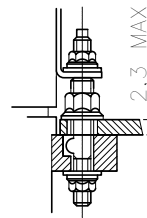


MOUNTING HOLE:3,6 mm

MOUNTING TORQUE
0,45 Nm ±0,1 Nm

CODE 3 : 14-464-03

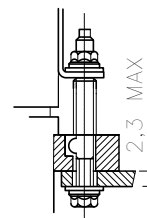
LOOSE UNC HARDWARE PER M12883/46
BOTTOM MOUNT



MOUNTING HOLE:4,4 mm

MOUNTING TORQUE
THREAD SIZE 2,8:0,45 Nm – THREAD SIZE 4,2:1,1 Nm

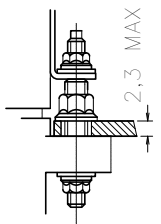
TOP MOUNT



MOUNTING HOLE:3,2 mm

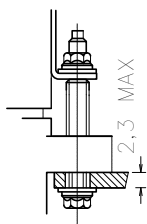
CODE 4 : 14-464-05

FIXED UNC HARDWARE PER M12883/46
BOTTOM MOUNT TOP MOUNT



MOUNTING HOLE:4,4 mm

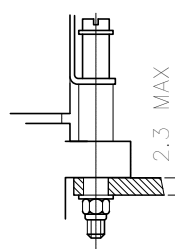
MOUNTING TORQUE
THREAD SIZE 2,8:0,45 Nm – THREAD TORQUE 4,2:1,7 Nm



MOUNTING HOLE:3,2 mm

CODE 5 : 14-464-06

FIXED METRIC HARDWARE
TOP MOUNT

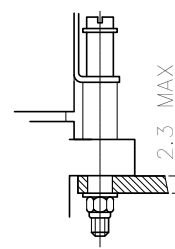


MOUNTING HOLE:3,6 mm

FOR RELAYS WITH CODE B TERMINALS
MONTING TORQUE 0,45 Nm

CODE 6 : 14-464-07

FIXED UNC HARDWARE
TOP MOUNT



MOUNTING HOLE:3,6 mm

FOR RELAYS WITH CODE C TERMINALS
MOUNTING TORQUE 0,45 Nm

Code A

Dia 0.861.85mm

CONTACT SIZE AND STYLE

<p>Code 0 Without contacts</p>	<p>Code 1 Crimp end to 14 421 00 accomodate AWG20-22-24 MIL-C-39029/22-192 <u>Contact mating end #20</u></p>	<p>Code 4 Crimp end to 31 164 00 accomodate AWG20-22-24 MIL-C-39029/101-553 <u>Contact mating end #20</u></p>
---	---	--

SOCKET NUMBERING SYSTEM

	S210	A	1	A	1
1-Basic socket designation_____					
2-Terminal Layout_____					
3-Mounting Hardware_____					
4-Grommet to seal on wire insulation_____					
5-Contact size and style_____					

MS/LRE CROSS REFERENCE LIST

MS - Number		LRE P/N
M12883/45A-001		S210-A4A1
M12883/45B-001		S210-A4A4