

**1. SCOPE**

This specification shall cover the characteristics of the ceramic resonator with 455KHz

**2. SPECIFICATION NO. :**

**3. PART NO. : ZTB455E**

**4. ELECTRICAL SPECIFICATION**

4.1 Oscillation Frequency (Fosc) : 455±2KHz

4.2 Resonant Impedance(Ro) : 20Ω max.

4.3 Capacitance (Co) : 285PF±20%

4.4 Temperature Characteristics

of Oscillation Frequency : ±0.3%max. (-20°Cto+80°C)

4.5 Rated Voltage : 50 VDC max.

4.6 Maximum Input Voltage : 15 Vp-p

4.7 Insulation Resistance : 1000MΩ min.

**5. Environmental Specification :**

5.1 Lead Pull : 1KG load Terminal Direction Min.

5.2 Vibration : 600-3300rpm.1.5mm.x.y & .z axes.1H Each Min.

5.3 Shock : Random Drop,30cm High Concrete Floor

5.4 Solderability : Dipping Terminals Into Molten Solder at 230±5°C At 5±0.5 Sec.

5.5 Resistance to

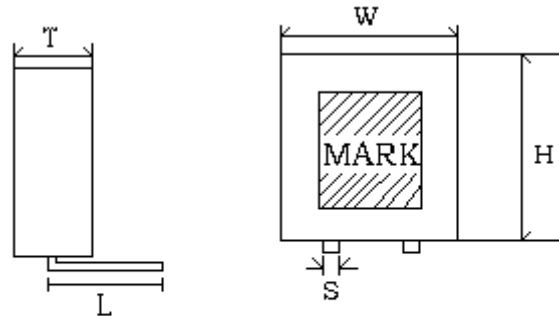
Soldering Heat : Dipping Lead Terminals No Close Than 2mm From the Sn 350 ± 10°C 3 Sec. After 1H to Test.

5.6 Heat Resistance : Keep In 40±2°C Temp 90%Humidity For 100H After 1H To Test.

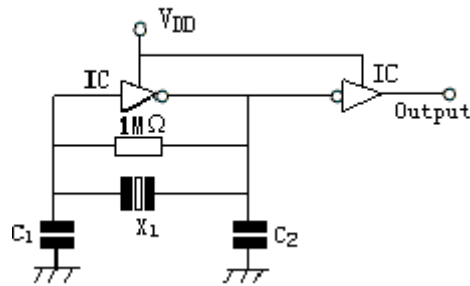
5.7 Operation Temperature : -20°Cto+80°C

5.8 Storage Temperature : -40°Cto+85°C

5.9 Aging Rate :Fosc ±0.5% max.

**6. Dimensions (mm)**

 Mark: **ZTB455E**

W=7.0mm    T=3.5mm    H=9.0mm    S=0.5mm    L=5.0mm

**7. Test circuit**


X1: ZTB455E

VDD=5.0V

IC: 1/6TC4069UBP×2

C1=C2=100PF