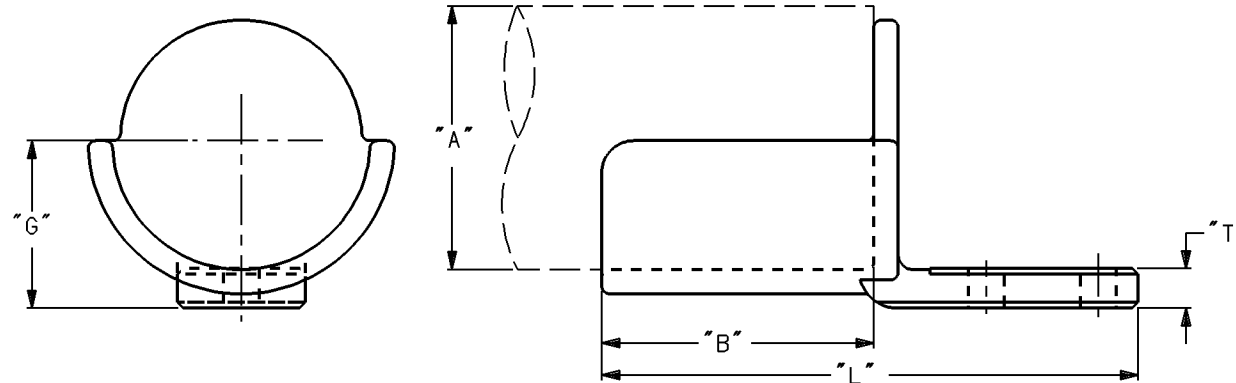
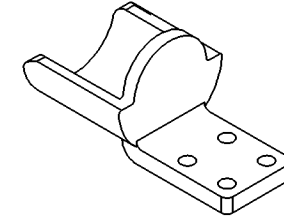


REV.	DATE	DESCRIPTION	BY	C'K'D.
2	5-11-94	REDRAWN TO BURNDY "C" SIZE FORMAT (PCN1821)	JPG	NSP



NOTES:

- 1 MATERIAL: CAST ALUMINUM ALLOY.
- 2 WELDING BY CUSTOMER. SEE DRAWING SD73608 FOR WELDING RECOMMENDATIONS.
- 3 AFTER WELDING, SCRATCH BRUSH THE PAD CONTACT SURFACE DRY AND APPLY AN OXIDE INHIBITOR "PENETROX A". "PENETROX A" CAN BE PURCHASED FROM BURNDY CORPORATION IN CANS OR PLASTIC SQUEEZE BOTTLES.
- 4 ADD SUFFIX LETTER "Q" TO THE CATALOG NUMBER FOR PAD FINISHED ON BOTH SIDES. EXAMPLE: WAS20A34NQ
- 5 DIMENSIONS IN BRACKETS [mm] ARE IN MILLIMETERS FOR REFERENCE ONLY.
- 6 ALL PADS ARE NEMA DRILLED.
- 7 SEE DRAWING SC208961 FOR CENTERFORMED TERMINALS.

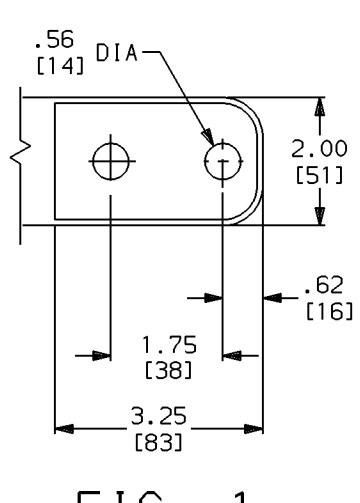


FIG. 1

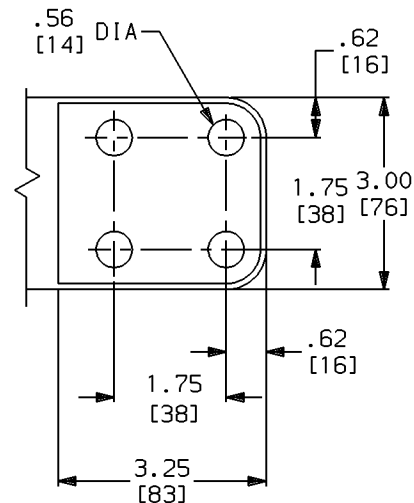


FIG. 2

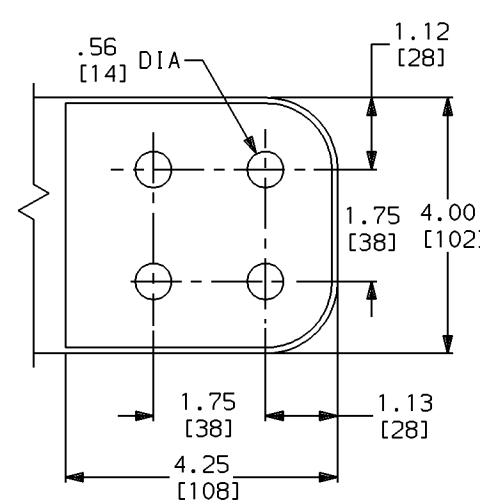


FIG. 3

SUPERSEDES SA207596-SHT01 REV 1

SIDEFORMED WELDMENT TERMINAL	
CAT NO: WAS__A-_N	SCALE 1:4
DRAWN: LAVOIE 5-2-94	CHECKED: .
DSGN APPVL: N FERRARO 6-22-92	MFG APPVL: .
Q.A. APPVL: R SOUDEN 6-24-92	MKTG APPVL: D HAMILTON 6-23-92
CAD FILE: SC207596-SHT01	PM REF: N/A
	MDL REF: N/A
PROJECT: EPS703	
DRAWING NO. SC207596	
REV 2	
SHEET 1 OF 2	



REV: 111991

REV.	DATE	DESCRIPTION	BY	C'K'D.
1	5-11-94	REDRAWN TO BURNDY "C" SIZE FORMAT (PCN1821)	JPG	NSP

ALUMINUM CONDUCTOR		CATALOG NUMBER	FIG. NO.	DIMENSIONS IN [mm]			
SCH. 40/80	"A" [mm]			B	G	L	T
3/4"	1.05 [27]	WAS14A2N	1	2.50 [64]	1.50 [38]	6.50 [165]	.38 [10]
1"	1.32 [33]	WAS15A2N	1	2.75 [70]	1.19 [30]	6.75 [171]	.38 [10]
		WAS15A34N	2				
1 1/4"	1.66 [42]	WAS16A2N	1	3.00 [76]	1.38 [35]	7.00 [178]	.38 [10]
		WAS16A34N	2				
1 1/2"	1.90 [48]	WAS17A2N	1	3.25 [83]	1.50 [38]	7.25 [184]	.44 [11]
		WAS17A34N	2				.38 [10]
2"	2.38 [60]	WAS18A2N	1	3.50 [89]	1.75 [44]	7.50 [191]	.44 [11]
		WAS18A34N	2				.38 [10]
		WAS18A44N	3	3.63 [92]		8.62 [219]	.50 [13]
2 1/2"	2.88 [73]	WAS19A2N	1	3.63 [92]	2.00 [51]	7.87 [200]	.56 [14]
		WAS19A34N	2				8.87 [225]
		WAS19A44N	3				
3"	3.50 [89]	WAS20A2N	1	3.67 [93]	2.38 [60]	8.25 [210]	.69 [18]
		WAS20A34N	2				9.25 [235]
		WAS20A44N	3	3.75 [95]			
3 1/2"	4.00 [102]	WAS21A2N	1	4.25 [108]	2.62 [67]	8.38 [213]	.62 [16]
		WAS21A34N	2				
		WAS21A44N	3				
4"	4.50 [114]	WAS22A2N	1	4.25 [108]	2.88 [73]	8.38 [213]	.75 [19]
		WAS22A34N	2				
		WAS22A44N	3				
5"	5.56 [141]	WAS24A34N	2	4.25 [108]	3.62 [92]	8.50 [216]	.75 [19]
		WAS24A44N	3			9.50 [241]	
6"	6.63 [168]	WAS86A44N	3	4.25 [108]	4.00 [102]	9.50 [241]	1.00 [25]

REV: 111991

SUPERSEDES SA207596-SHT02 REV 0

SIDEFORMED WELDMENT TERMINAL	
CAT NO: WAS__A-_N	SCALE 1:4
DRAWN: LAVOIE 5-2-94	CHECKED: .
DSGN APPVL: N FERRARO 6-22-92	MFG APPVL: .
Q.A. APPVL: R SOUDEN 6-24-92	MKTG APPVL: D HAMILTON 6-23-92
CAD FILE: SC207596-SHT02	PM REF: N/A
	MDL REF: N/A
PROJECT: EPS703	
DRAWING NO. REV	
SC207596 1	
SHEET 2 OF 2	

BURNDY
an FCI Company
U.S. ELECTRICAL DIVISION
MANCHESTER, NH 03108