

Series E, 2" x 2"

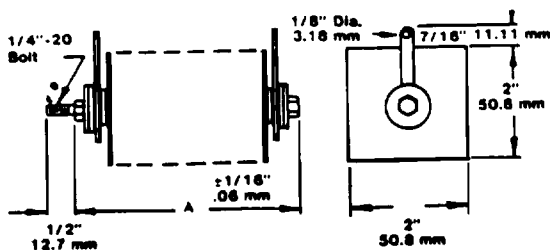


Polarized (DC type)

Catalog number	Max. DC voltage	Max. clamping voltage	Fig.	Dim. A"	Dim. A mm
SD-2619-1	22.5	60	1	7/8	22.23
SD-2619-2	45	120	1	1-3/8	34.93
SD-2619-3	67.5	180	1	1-5/8	41.28
SD-2619-4	90	240	1	1-7/8	47.63
SD-2619-5	112.5	300	1	2-1/8	53.98
SD-2619-6	135	360	1	2-3/8	60.33
SD-2619-7	157.5	420	1	2-5/8	66.68
SD-2619-8	180	480	1	2-7/8	73.03
SD-2107-9	202.5	540	2	3	76.20
SD-2107-10	225	600	2	3-1/4	82.55
SD-2107-11	247.5	660	2	3-1/2	88.90
SD-2107-12	270	720	2	3-11/16	93.66
SD-2107-13	292.5	780	2	3-7/8	98.43
SD-2107-14	315	840	2	4-1/8	104.78
SD-2107-15	337.5	900	2	4-3/8	111.13
SD-2107-16	360	960	2	4-9/16	115.89
SD-2107-17	382.5	1020	2	4-13/16	122.24
SD-2107-18	405	1080	2	5	127.0
SD-2107-19	427.5	1140	2	5-1/4	133.35
SD-2107-20	450	1200	2	5-9/16	141.29
SD-2107-21	472.5	1260	2	5-3/4	146.05
SD-2107-22	495	1320	2	6	152.4
SD-2107-23	517.5	1380	2	6-3/16	157.16
SD-2107-24	540	1440	2	6-3/8	161.93
SD-2107-25	562.5	1500	2	6-5/8	168.28
SD-2107-26	585	1560	2	6-7/8	174.63
SD-2107-27	607.5	1620	2	7-1/16	179.39
SD-2107-28	630	1680	2	7-1/4	184.15
SD-2107-29	652.5	1720	2	7-1/2	190.50
SD-2107-30	675	1800	2	7-3/4	196.85

Peak discharge current—amperes 15

Series E Figure 1



Non-Polarized (AC type)

Catalog number	Max. AC voltage	Max. clamping voltage	Fig.	Dim. A"	Dim. A mm
SD-2650-1	26	60	1	1-3/8	34.93
SD-2650-2	52	120	1	1-7/8	47.63
SD-2650-3	78	180	1	2-1/4	57.15
SD-2650-4	104	240	1	2-3/4	69.85
SD-2650-5	130	300	2	3-1/8	79.38
SD-2650-6	156	360	2	3-5/8	92.08
SD-2650-7	182	420	2	4	101.6
SD-2650-8	208	480	2	4-1/2	114.30
SD-2650-9	234	540	2	5	127.0
SD-2650-10	260	600	2	5-3/8	136.53
SD-2650-11	286	660	2	5-7/8	149.23
SD-2650-12	312	720	2	6-3/8	161.93
SD-2650-13	338	780	2	6-3/4	171.45
SD-2650-14	364	840	2	7-1/4	184.15
SD-2650-15	390	900	2	7-5/8	193.68
SD-2650-16	416	960	2	8-1/8	206.38
SD-2650-17	442	1020	2	8-5/8	219.08
SD-2650-18	468	1080	2	9	228.60
SD-2650-19	494	1140	2	9-1/2	241.30
SD-2650-20	520	1200	2	9-7/8	250.83

Peak discharge current—amperes 15

For mounting brackets, add "B" suffix to catalog number

Series E Figure 2

