

New! R SERIES SNAP-IN ROCKER SWITCHES

B

FEATURES

- Cost effective illuminated or non-illuminated models.
- Single pole & double pole maintained or momentary action models.
- Actuator and case color selections.
- Standard actuator marking options.

SPECIFICATIONS

| | |
|-------------------------------------|--|
| Contact ratings: | 16A 125VAC 1/4 HP (UL/CSA). 16A 250VAC 1/4 HP (UL/CSA). 20A 125VAC 3/4 HP 250VAC (UL) 16(4)A 250V ~ T125 1E4 10(2)A 250V ~ 5E4 (VDE, SEMCO, NEMCO, DEMCO, FIMCO, SEV). |
| Initial contact resistance: | 20 milliohms max. |
| Insulation resistance: | 100 megohms min. at 500 V |
| Dielectric strength: | 1000 VAC for 1 minute |
| Electrical life: | 16(4)A 250VAC: 10,000 cycles 10(2)A 250VAC: 50,000 cycles |
| Operating temperature range: | -20°C to 125°C |

MATERIALS

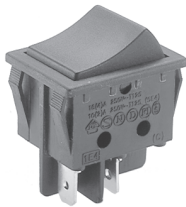
| | | | |
|-------------------|------------------------------|---------------|--------------------------------|
| Contacts: | Silver cadmium alloy | Lamps: | Neon or fluorescent. |
| Terminals: | Silver plated copper | | Illumination available |
| Actuator: | Nylon type 66 (UL94V-2 min.) | | only with function 1 (ON OFF). |
| Case: | Nylon type 66 (UL94V-2 min.) | | |

AGENCY RECOGNITION

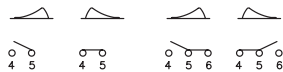


UL, CSA, VDE, SEMKO, NEMKO, DEMKO, FEMKO, & SEV. Models are supplied with agency markings.

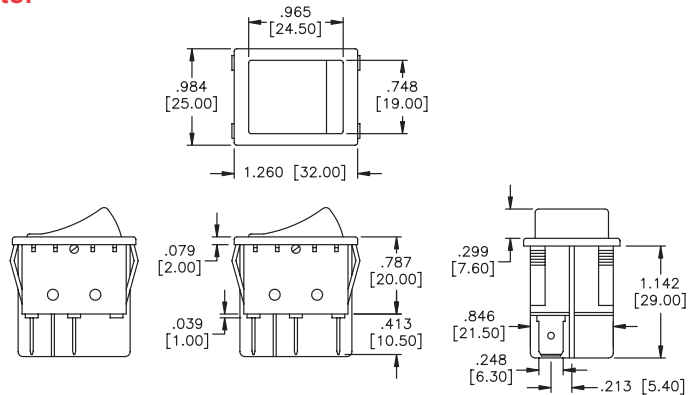
Single pole - quick connect terminals - curved actuator



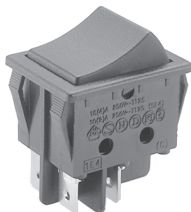
| MODEL NO. | CIRCUIT |
|------------|---------------|
| R1101C2NBB | ON OFF |
| R1201C2NBB | ON OFF |
| R1301C2NBB | ON OFF ON |
| R1401C2NBB | (ON) OFF |
| R1501C2NBB | (ON) ON |
| R1601C2NBB | (ON) OFF (ON) |
| R1701C2NBB | (ON) OFF ON |



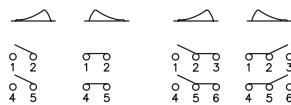
Parenthesis indicates momentary action. Models in table have black actuator and black case.



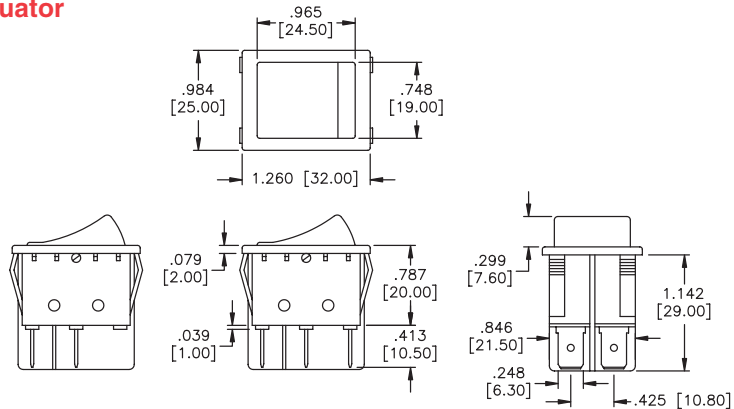
Double pole - quick connect terminals - curved actuator



| MODEL NO. | CIRCUIT |
|------------|---------------|
| R2101C2NBB | ON OFF |
| R2201C2NBB | ON OFF |
| R2301C2NBB | ON OFF ON |
| R2401C2NBB | (ON) OFF |
| R2501C2NBB | (ON) ON |
| R2601C2NBB | (ON) OFF (ON) |
| R2701C2NBB | (ON) OFF ON |



Parenthesis indicates momentary action. Models in table have black actuator and black case.



SPECIFICATIONS SUBJECT TO CHANGE WITHOUT NOTICE

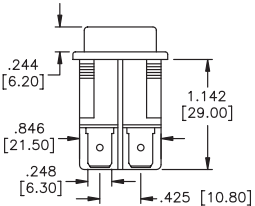
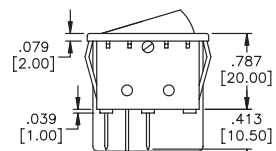
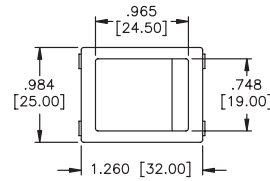
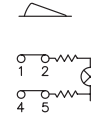
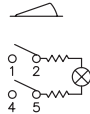
New! R SERIES SNAP-IN ROCKER SWITCHES

Double pole - illuminated - quick connect terminals - flat actuator



| MODEL NO. | CIRCUIT |
|------------|---------------|
| R2101F2LB0 | ON OFF |
| R2201F2LB0 | ON OFF |
| R2301F2LB0 | ON OFF ON |
| R2401F2LB0 | (ON) OFF |
| R2501F2LB0 | (ON) ON |
| R2601F2LB0 | (ON) OFF (ON) |
| R2701F2LB0 | (ON) OFF ON |

Parenthesis indicates momentary action. Models in table have orange actuator and black case.



SPECIFICATIONS SUBJECT TO CHANGE WITHOUT NOTICE

Additional ordering information: Commonly ordered models are shown above with complete model numbers and specifications. Below is an order format that enables you to 'build your own switch' and specify the correct switch model number by simply selecting from all available options shown and filling in the boxes.

'BUILD YOUR OWN SWITCH' ORDER FORMAT

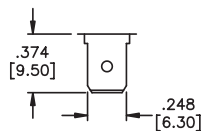
Fill in boxes with selections shown for complete model number.
Allowable selections are shown below each respective box.
Note 'NONE' indicates box may be left empty.

| Series | Number of poles | Electrical functions | Terminals | Actuator shape | Actuator type | Marking/ lens color |
|----------------------------|--|---|--|--------------------------|--|--|
| <input type="checkbox"/> R | <input type="checkbox"/> | <input type="checkbox"/> | <input type="checkbox"/> | <input type="checkbox"/> | <input type="checkbox"/> | <input type="checkbox"/> |
| | 1 Single pole 2 Double pole | 1 ON OFF 2 ON ON 3 ON OFF ON 4 (ON) OFF 5 (ON) ON 6 (ON) OFF (ON) 7 (ON) OFF ON <small>parenthesis = momentary</small> | 0 Quick-connect 1 Solder lug 3 Screw type | 1 Single 2 Twin | C Curved F Flat Note: only flat actuator is available with full illumination- i.e.-no lens | 1 HI LO 2 No marking 3 ON OFF 4 O I 5 O — 6 O II TWIN ACTUATORS: 7 |
| | <input type="checkbox"/> | <input type="checkbox"/> | <input type="checkbox"/> | <input type="checkbox"/> | <input type="checkbox"/> | <input type="checkbox"/> |
| | L Illuminated N non-illum. C round lens <input type="checkbox"/> R square lens <input type="checkbox"/> | A Gray B Black W White | A Gray B Black G Green O Orange R Red W White | (NONE) W Waterproof | | G Green lens R Red lens O Orange lens |

Example of completely specified model number:
R2301C6NBRW

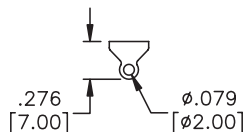
TERMINALS

QUICK-CONNECT



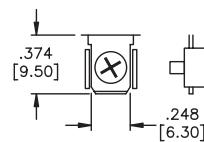
0

SOLDER LUG



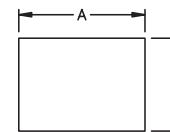
1

SCREW



3

PANEL CUT-OUTS



| pnl. tk'ness. | A +0, -.004 | B +.006, -.0 |
|---------------|-------------|--------------|
| .029-.049" | 1.181" | .866" |
| .050-.078" | 1.189" | .866" |
| .079-.118" | 1.200" | .866" |