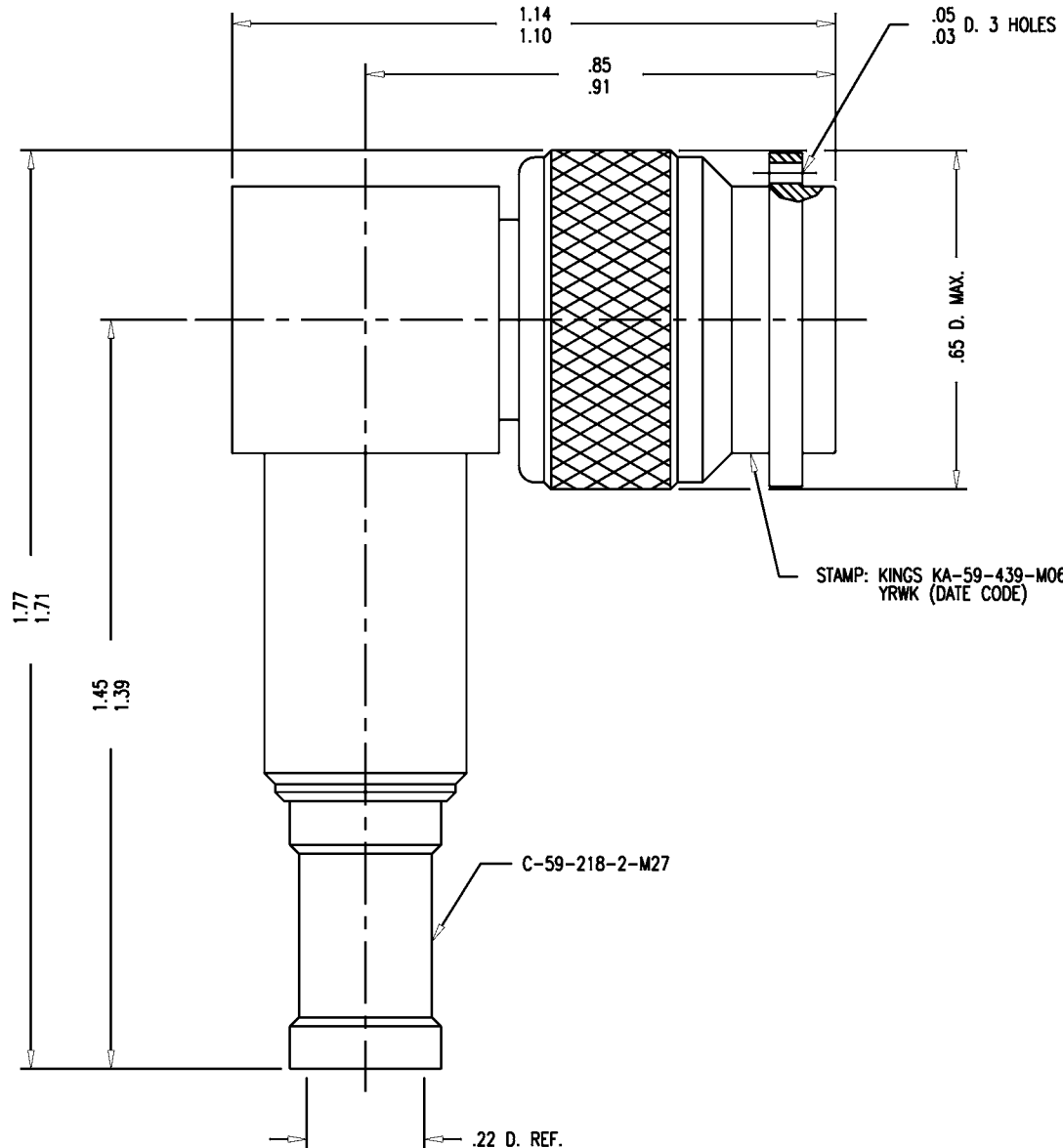


DASH NO. M CODE MADE FROM

GSD



KA-59-439-M06

REVISIONS	
ISSUE	CHANGES
3	CN 34481 C REDRAWN KH 05/25/93
4	CN 37797 E TML 03/10/99
5	CN 38037 E HVN 06/28/00
6	CN 38226 C BDH 2/15/01

KAM2801

- NOTES:
- FOR USE WITH RG-142, 223 & 400/U CABLE.
 - FOR CABLE TRIMMING USE KTJ-149 & KTD-166.
 - FOR CRIMPING USE DIE SIZE KTH-2061.
 - FOR CABLING INSTRUCTIONS SEE CP-5401.
 - INTERFACE PER MIL-STD-348, FIG. 313-1.
 - CENTER CONTACT (1-504-31MA9) TO BE SUPPLIED UNASSEMBLED.
 - MARK PACKAGE: KINGS KA-59-439-M06 YRWK (DATE CODE)
 - MATERIALS:
 - INSULATORS: TEFLON, ASTM-D-1457
 - GASKET: SILICONE RUBBER, ZZ-R-765
 - C-RING: PHOSPHOR BRONZE, QQ-B-750
 - K-GRIP SLEEVE: COM. BRONZE, ALLOY 220
 - OUTER CONTACT } BER. COPPER, ASTM-B-196
 - CENTER CONTACT F }
 - ALL OTHER METAL PARTS: BRASS, QQ-B-626
 - FINISHES:
 - CENTER CONTACTS: HARD GOLD PLATE, PER MIL-G-45204
 - ALL OTHER METAL PARTS: KINGS TARNISH RESISTANT FINISH (TR-5)
 - ELECTRICAL CHARACTERISTICS:
 - NOMINAL IMPEDANCE: 50 OHMS
 - WORKING VOLTAGE: 500 VRMS
 - FREQUENCY RANGE: DC TO 11 GHz.

SCALE 4:1

APPROX SURFACE AREA

USED ON

REF: BOEING

PLUG, ANGLE, TNC

DRAWN KH	DATE 05/26/93
DESIGN MJB	DATE 07/26/93
APPR.	DATE

GSD

UNLESS OTHERWISE SPECIFIED

1. TOLERANCES: FRACTIONS & 2 PLACE DECIMALS ± .010	2. REMOVE ALL BURRS, BREAK SHARP EDGES .005 MAX.	7. ALL LEAD THREADS TO BE CHAMFERED 45° TO ROOT DIAMETER.
3 PLACE DECIMALS ± .004 ANGLES ± 1°	3. NO FILLETS PERMITTED.	★ CRITICAL DIMENSIONS
CONCENTRICITY OF ANY 2 DIAMETERS MAY NOT EXCEED HALF THE SUM OF THEIR TOLERANCES.	4. SURFACE ROUGHNESS 63 MICRONS RMS MAX.	
	5. ALL DIMENSIONS PRIOR TO PLATING.	
	6. ALL PLATING IN ACCORDANCE WITH KER 10004.	

KINGS ELECTRONICS CO., INC. ROCK HILL, SOUTH CAROLINA 29730

KA-59-439-M06