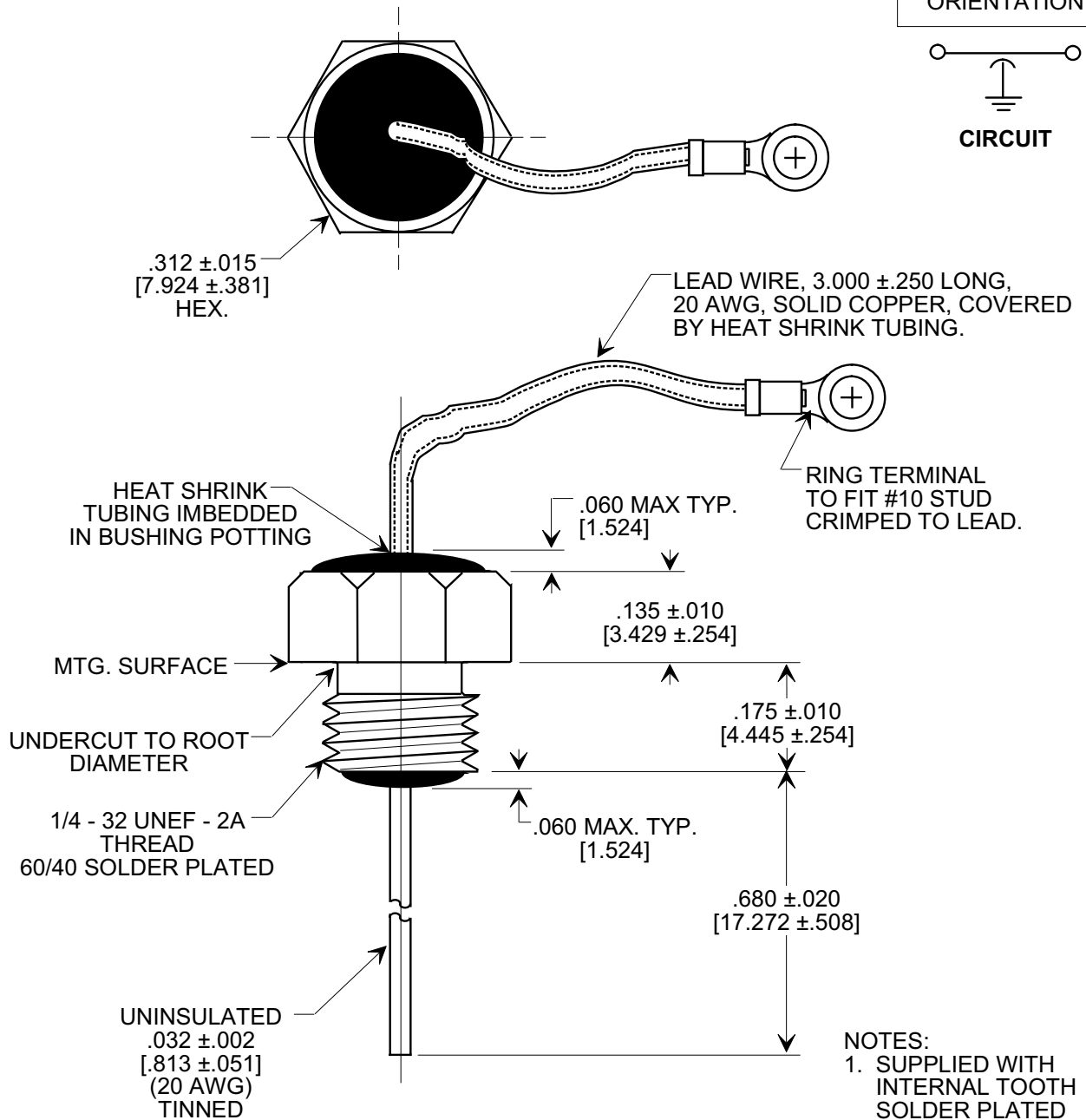
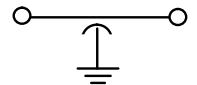
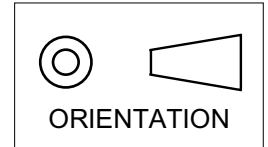


MARKETING SALES DRAWING

DIMENSIONS IN INCHES - DO NOT SCALE THIS DRAWING

Electrical Testing
per Tusonix standard
test plans and Mil-Std-202
Test Methods.



NOTES:
1. SUPPLIED WITH INTERNAL TOOTH SOLDER PLATED LOCKWASHER.

MIN. CAP.	125° WORKING VOLTAGE	CURRENT V.D.C.	DWV	MINIMUM NO LOAD INSERTION LOSS (dB) AT 25°C PER MIL-STD-220			
				10 MHz	40 MHz	100 MHz	1 GHz
1000/2000 pF	750 VDC	10A	2100 VDC 2 SEC	4	12	20	35

REVISION RECORD	0	1	2	3	4	5
Original Release C.O.	REVISIED DWG. S.M. 02-07-96	ADDED "MATTE TIN PLATED" 2 PLACES. S.M. 02-20-96	ADDED SOLDER PLATED 2 PLACES. S.M. 02-22-96	WAS SK7290-000-S & NOTE 2 DELETED. S.M. 04-08-96	960327-2 CHG TO NEW FORMAT & CORRECTED THREADS. S.M. 08-14-98	19980811-2-01

--TOLERANCES-- Unless Otherwise Specified		Title FEED-THRU RESIN SEAL FILTER	
DECIMAL ±	NOTED	Drawn S.M. 11-08-95	Scale 4 X
ANGLES ±	////	Approved B.M. 11-08-95	
TUSONIX TUCSON, ARIZONA		A	2443-048-X7U0-102P

X-2015 Rev-0