

MICRO SWITCH

FREEPORT ILLINOIS U.S.A.
A DIVISION OF HONEYWELL
FED MFG CODE 91929

SWITCH-TOGGLE

CATALOG LISTING
1TL187 SERIES
CHART 2

THIS DRAWING COVERS A PROPRIETARY ITEM AND IS THE PROPERTY OF MICRO SWITCH A DIVISION OF HONEYWELL THIS DRAWING IS NOT TO BE COPIED OR USED WITHOUT THE APPROVAL OF MICRO SWITCH

CATALOG LISTING
△

AVAILABLE LOCKING COMBINATIONS FOR CONFIGURATION SEE LETTERING DETAILS

CIRCUIT MADE WITH TOGGLE LEVER IN
KEYWAY SIDE (1-2) CENTER (1-2) OPPOSITE KEYWAY (2-3)

CURRENT CAPACITY (AMPS)
RESISTIVE LOAD DC VOLTS IAC VOLTS LAMP LOAD IND LOAD
28 125 250 125 250 28 125 28 125
VDC VAC VDC VAC

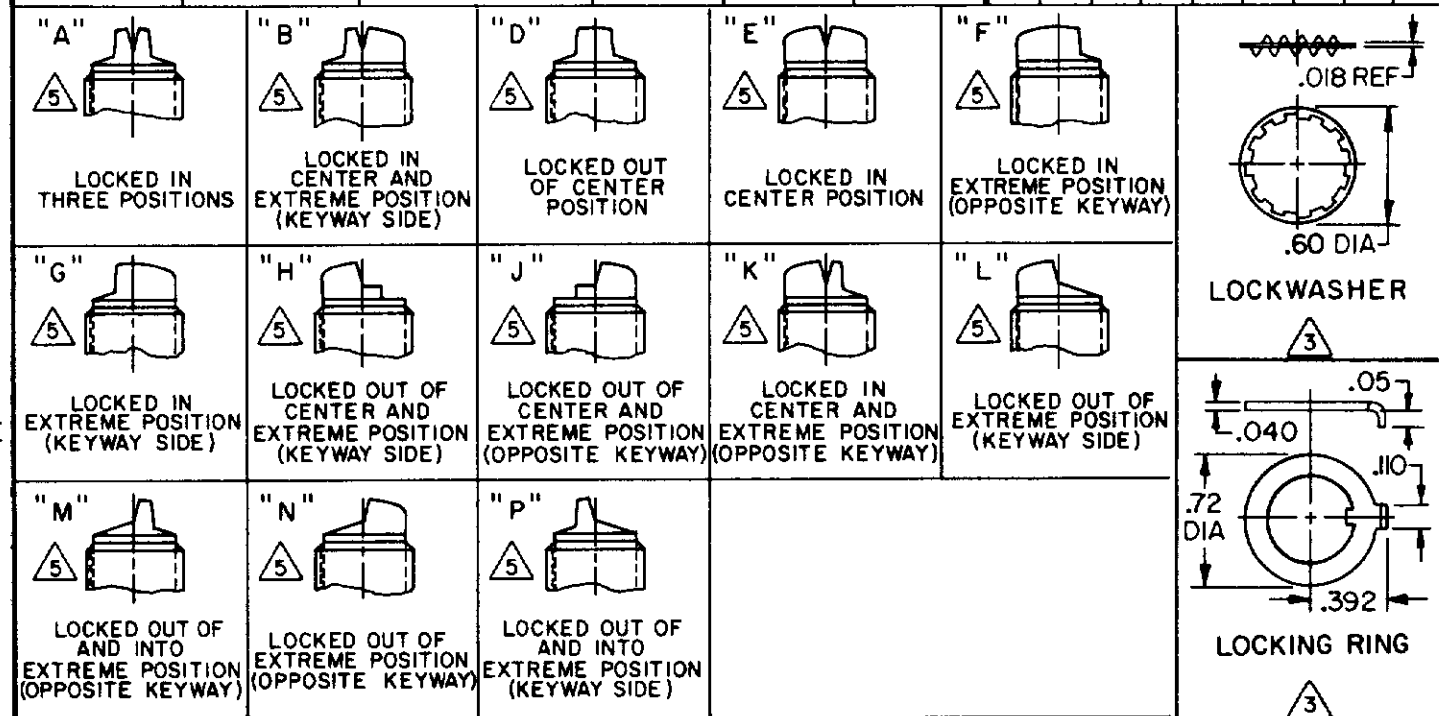
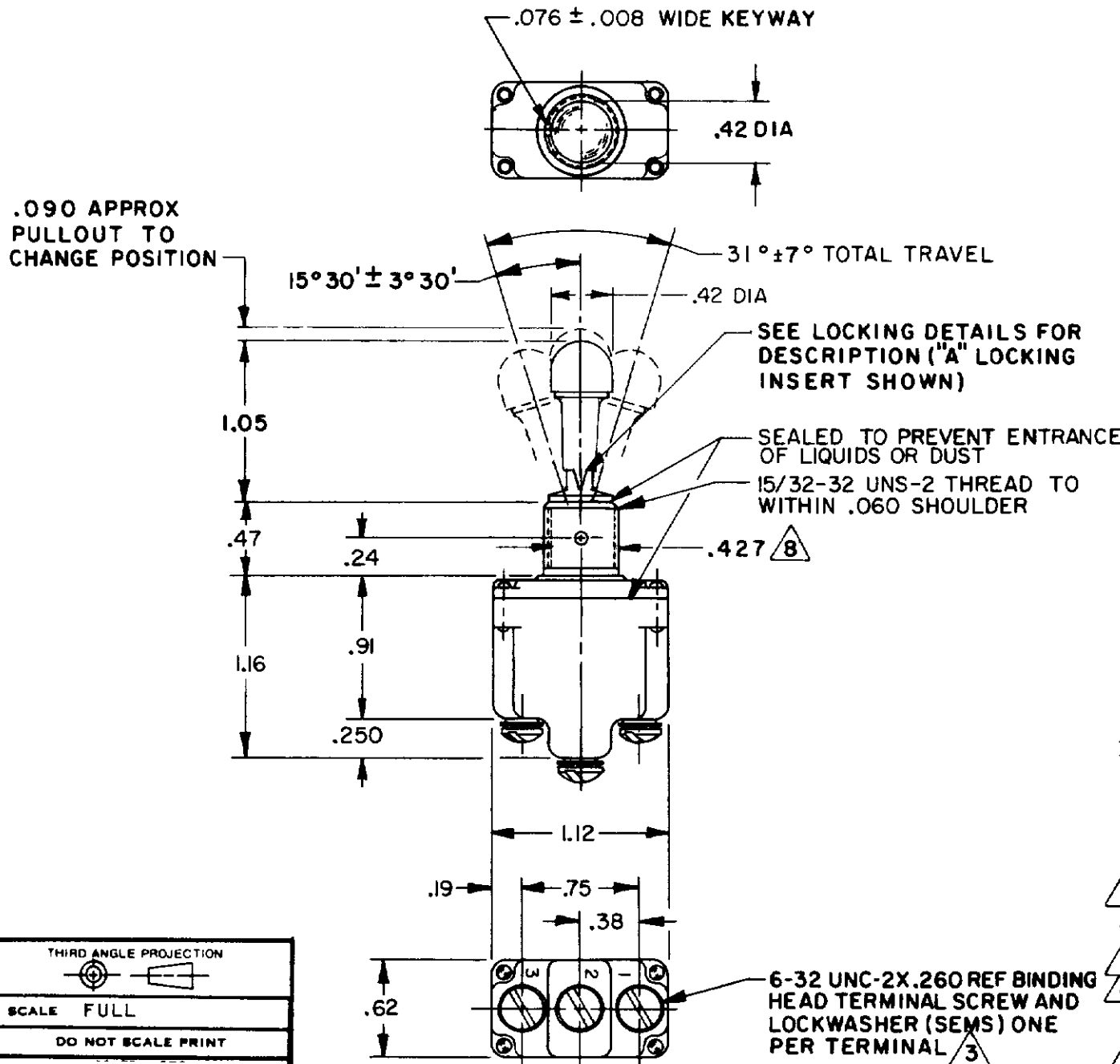
ITL187-1	AB,DE,F,G,H,J,K,L,M,NP	ON	OFF	ON									
ITL187-2	D, F, G	OFF	NONE	ON									
ITL187-3	D, F, G	ON	NONE	ON	20	.75	.5	15	6	5	3	15	10
ITL187-21	E, F, K, M	NONE	OFF	ON	(REFER TO L191 FOR UL RATING)								
ITL187-31	E, F, K, M	NONE	ON	ON									
ITL187-4	F	MOM OFF	NONE	ON									
ITL187-5	E, F, K, L, M, N	MOM ON	OFF	ON									
ITL187-6	F	MOM ON	NONE	OFF									
ITL187-7	E, L, N	MOM ON	OFF	MOM ON	15	.75	.5	15	6	4	2	10	7
ITL187-8	F	MOM ON	NONE	ON	(REFER TO L192 FOR UL RATING)								
ITL187-51	E	NONE	ON	MOM ON									
ITL187-61	E	MOM ON	OFF	NONE									

CATALOG LISTING
1TL187 SERIES CHART 2
PAGE 1 OF 1

ISSUE
M
3

REVISIONS
A C077942
J A F
28 JUN 94
B CO-94430
J J A
10 NOV 99

RELEASE NO PR-12294 REPLACES
CHECK
CHECK
DRAWN
JAF
28 JUN 94



NOTES
1 - SWITCHES ARE CAPABLE OF WITHSTANDING A TEMPERATURE OF 160°F CONTINUOUSLY AT FULL RATED LOAD
2 - CIRCUIT DESIGNATION AND MICRO SWITCH CATALOG LISTING MARKED ON SIDE OF SWITCH
△ 3 FURNISHED UNASSEMBLED
4 - FOR TERMINAL COVER SEE MICRO SWITCH CAT. LIST. 5PA7
△ 5 KEYWAY SHOWN ON LEFT SIDE
△ 6 SUFFIX LETTER MUST BE ADDED FOR DESIRED TYPE OF TOGGLE LOCKING. SEE CHART FOR AVAILABLE LOCKING COMBINATIONS
△ 7 APPLIES ONLY TO "ON" AND "MOMENTARY ON" POSITIONS FROM BOTTOM OF KEYWAY TO MAJOR DIA. OF 15/32 THREAD
△ 8
9 - GOLD PLATED CONTACTS

THIRD ANGLE PROJECTION
SCALE FULL
DO NOT SCALE PRINT
UNLESS OTHERWISE SPECIFIED TOLERANCES ARE
ONE PLACE (0) ± .030
TWO PLACE (.00) ± .015
THREE PLACE (.000) ± .005
ANGLES ±
WEIGHT .08 LBS. APPROX

L191	15A 125, 250, 277 VAC 1/2HP 125 VAC 1HP 250, 277 VAC 5A 125 VAC "L"	CE RU
L192	10A 125, 250, 277 VAC 1/4HP 125 VAC, 1/2HP 250, 277 VAC 3A 125 VAC "L"	CE RU