

MICRO SWITCH

FREEMONT ILLINOIS U.S.A.
A DIVISION OF HONEYWELL
FED. MFG. CODE 91929

SWITCH - TOGGLE

CATALOG LISTING
1TL84 SERIES
CHART 1

AVAILABLE LOCKING COMBINATIONS FOR CONFIGURATION SEE LETTERED DETAILS

CATALOG LISTING
6

CIRCUIT MADE WITH TOGGLE LEVER IN
KEYWAY SIDE (1-2) CENTER (1-2) OPPOSITE KEYWAY (2-3)

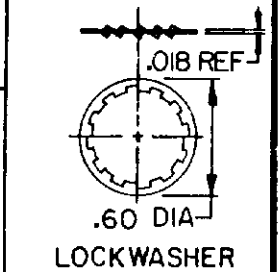
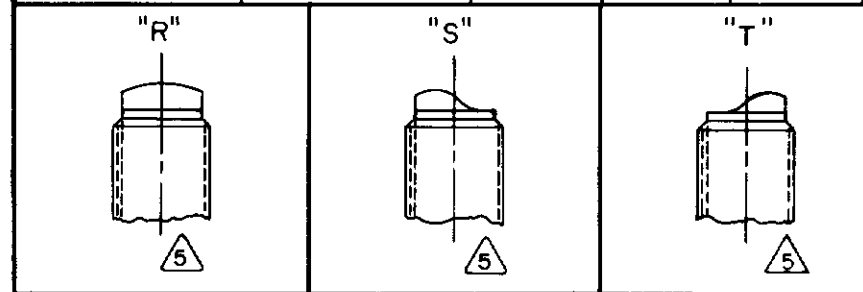
MILITARY RATING (AMPS)									
RESISTIVE LOAD					LAMP LOAD		INDUCTIVE LOAD		
DC VOLTS		AC VOLTS			28 VDC	125 VAC	28 VDC	125 VAC	125 VAC
28	125	250	125	250					

THIS DRAWING COVERS A PROPRIETARY ITEM AND IS THE PROPERTY OF MICRO SWITCH, A DIVISION OF HONEYWELL. THIS DRAWING IS NOT TO BE COPIED OR USED WITHOUT THE APPROVAL OF MICRO SWITCH.

R	ITL84-1	ON	OFF	ON
R	ITL84-2	OFF	NONE	ON
R	ITL84-3	ON	NONE	ON
R	ITL84-2I	NONE	OFF	ON
R	ITL84-3I	NONE	ON	ON
S	ITL84-4	MOM OFF	NONE	ON
R	ITL84-5	MOM ON	OFF	ON
S	ITL84-6	MOM ON	NONE	OFF
R	ITL84-7	MOM ON	OFF	MOM ON
S	ITL84-8	MOM ON	NONE	ON
T	ITL84-5I	NONE	ON	MOM ON
S	ITL84-6I	MOM ON	OFF	NONE
S	ITL84-8I	MOM ON	ON	NONE

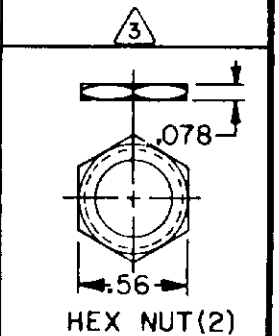
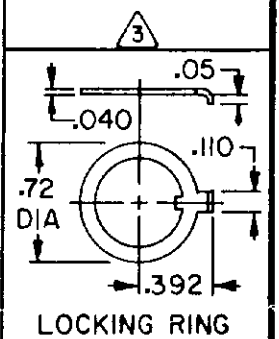
20 75 5 15 6 5 3 15 10
(REFER TO L191 FOR UL RATING)

15 75 5 15 6 4 2 10 7
(REFER TO L192 FOR UL RATING)

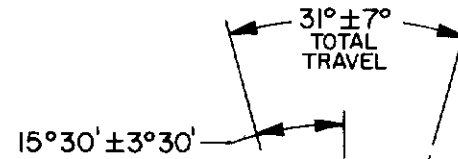
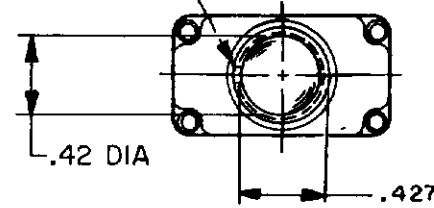


NOTES

- SWITCHES ARE CAPABLE OF WITHSTANDING A TEMPERATURE OF 160°F CONTINUOUSLY AT FULL RATED LOAD
- CIRCUIT DESIGNATION AND MICRO SWITCH CATALOG LISTING MARKED ON SIDE OF SWITCH
- FURNISHED UNASSEMBLED
- FOR TERMINAL COVER, SEE MICRO SWITCH CATALOG LISTING 5PA7
- KEYWAY SHOWN ON LEFT SIDE
- SUFFIX LETTER MUST BE ADDED FOR DESIRED TYPE OF TOGGLE LOCKING. SEE CHART FOR AVAILABLE LOCKING COMBINATIONS
- APPLIES ONLY TO "ON" AND "MOMENTARY ON" POSITIONS

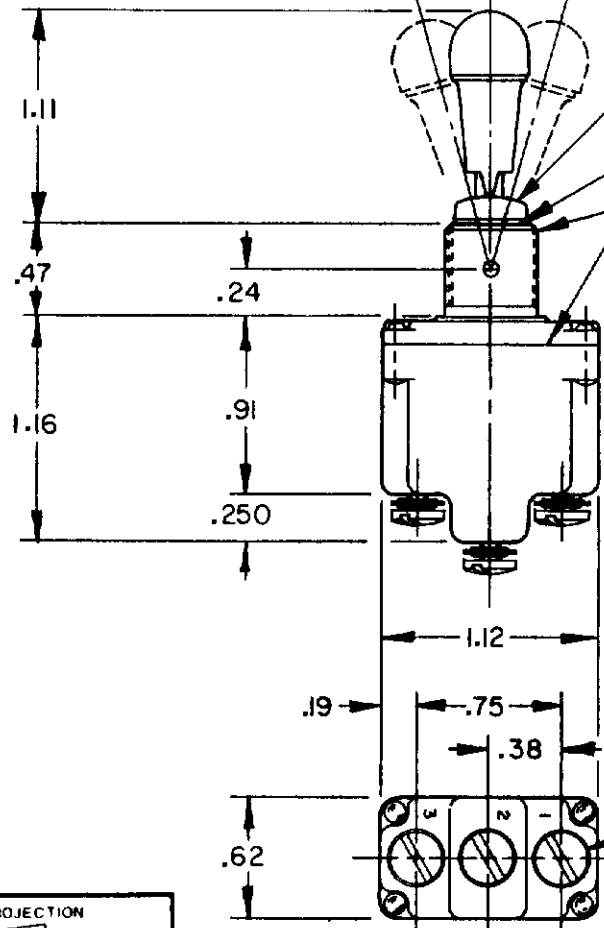


.076 ± .008 WIDE KEYWAY



SEE LOCKING DETAILS FOR DESCRIPTION ("R" LOCKING INSERT SHOWN)

SEALED TO PREVENT ENTRANCE OF LIQUIDS OR DUST
15/32-32 UNS-2 THREAD TO WITHIN .060 OF SHOULDER



6-32 UNC-2 X .260 REF BINDING HEAD TERMINAL SCREW AND LOCKWASHER (SEMS) ONE PER TERMINAL

THIRD ANGLE PROJECTION

SCALE FULL

DO NOT SCALE PRINT

TOLERANCES

APPLY TO DESIGN UNITS CONVERSIONS ARE ONLY FOR REFERENCE UNLESS NOTED TOLERANCES ARE 2

NO PLACES	DIM	TOL	DIM	TOL
	mm	mm/in	in	mm/in
ONE PLACE	X	1/64	X X	0.87/09
TWO PLACES	X X	0.47/018	X X X	0.34/018
THREE PLACES	X X X	0.15/008	X X X X	0.13/008

DESIGN UNITS SI METRIC US CUSTOMARY

RAW MATERIAL - COMMERCIAL STANDARD MICRO SWITCH STANDARDS APPLY

DIMENSIONS ARE TO BE MET BEFORE PROTECTIVE COATINGS ARE APPLIED

WEIGHT .08 LBS APPROX

15A-125, 250 OR 277VAC
1/2HP-125VAC; 1HP-250, 277VAC
5A-125VAC "L" CODE L191

10A-125, 250 OR 277VAC
1/4HP-125VAC; 1/2HP-250, 277VAC
3A-125VAC "L" CODE L192

CATALOG LISTING
1TL84 SERIES CHART 1
PAGE 1 OF 1

ISSUE
M
3

REVISIONS
A CO 94431
C ST 24 NOV 99
B 202798
CSL 9 APR 01

CHECK
KAG 23 JUN 94

DLT 10 JUN 94

RASTER DRAWN

1TL84 SERIES

REPLACES NO CO-78465

CHECK

CHECK

CHECK

CHECK

CHECK

CHECK

CHECK

CHECK

CHECK

CHECK

CHECK

CHECK

CHECK