

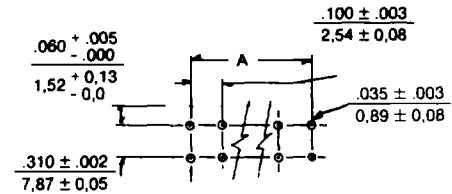
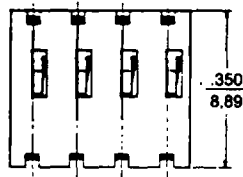
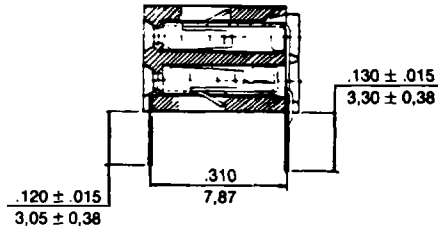
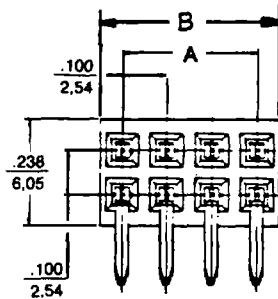
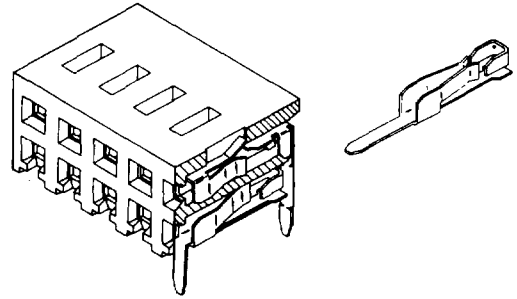
Dual Row Right Angle PCB Connector



A

7990 Series

- Designed for perpendicular board stacking
- **Mates with .100" grid male headers:**
 - Dual and single row straight and right angle headers: e.g. 70203 & 8624
 - .025" square and round wire pins: e.g. 4166
- **Stackable end-to-end**
- **Dual beam box contact**
- **Staggered mating depth** to lower initial insertion force
- **Back row of P.C. tails slightly longer** to ease board loading
- **Positive pin stop** to prevent shorting between rows
- P.C. tails locked into housing
- **Circuit sizes 8-130***



Recommended P.C. Board Hole Layout



Universal Polarizing Pin
Order No. 15-04-0292

Can be used with or without terminal in housing

In the Far East this product has different Eng. Nos. and Order Nos. Contact factory for sales drawings on 70057-XXXX.

Dimensions 7990

| Circuits | Dim. A* | Dim. B* | Circuits | Dim. A* | Dim. B* |
|----------|--------------|---------------|----------|---------------|---------------|
| 8 | .300 7.62 | .399 10.13 | 10 | .400 10.16 | .499 12.67 |

*For circuit sizes 12 through 130 add .100" or 2.54mm for each additional pin position

Ordering Information 7990

| PLATING OPTION | Order No. |
|----------------------------------|--------------|
| 30 microinches min. select gold | • 15-29-5XXX |
| 200 microinches min. overall tin | • 15-38-2XXX |

Replace "XXX" with number of circuits, 008-130

• U.S. Standard Product, available through Molex franchised distributors.